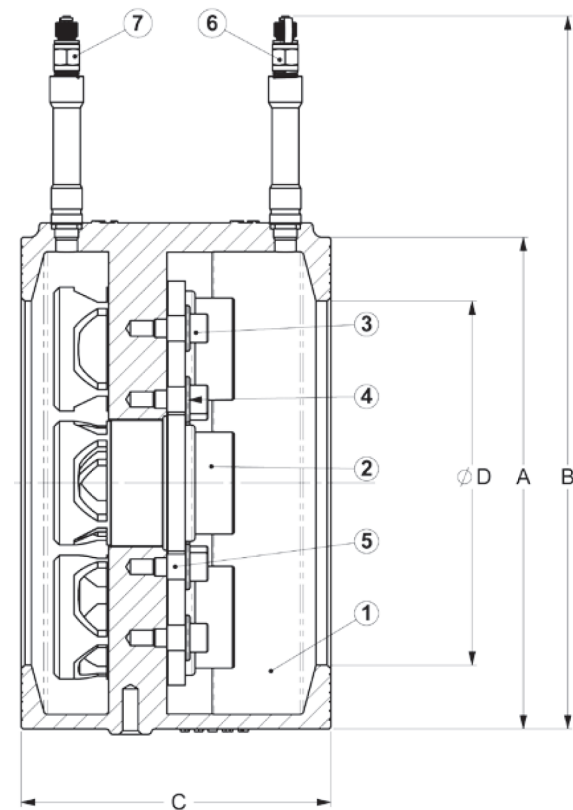




Wafer Automatic Flow Balancing Valve

Features

- Automatic system balance
- Self cleaning cartridge design
- Energy saving due to elimination of excessive flow
- Increased comfort due to accurate flow distribution
- Wafer mount between flanges
- Assures system balance even with fluctuating pressures
- Body ductile iron GGG 40
- Supplied with 100mm test points



DN	50	65	80	100	125	150	200	250
ØA	100	119	131	163	193	216	271	326
B	218	237	249	281	311	334	389	440
C	170	170	170	170	170	170	170	170
ØD	80	80	80	100	125	150	200	260
Max cartrs.	1	1	1	2	3	4	7	12
Flow Rate	3820	3820	3820	3820	3820	3820	3820	3820
range (l/h)	45000	45000	45000	90000	135000	180000	315000	540000
Kgs	3.41	4.91	4.79	6.90	9.00	11.73	18.75	23.44

DN	300	350	400	450	500	600	800
ØA	383	443	496	545	601	715	880
B	501	561	614	663	719	833	998
C	170	170	170	170	170	170	170
ØD	315	355	405	455	508	610	760
Max cartrs.	15	19	26	33	40	56	85
Flow Rate	3820	3820	3820	3820	3820	3820	3820
range (l/h)	675000	855000	1170000	1485000	1800000	2520000	3825000
Kgs	33.41	44.21	51.63	57.47	67.75	88.90	127.30

Technical Data

Max Pressure	16 Bar
Working Temperature	-20°C to +120°C

N.	Part Name	Materials
1	Body	Ductile iron
2	Cartridge	AISI 304
3	Screw	AISI 304
4	Washer	AISI 304
5	Socket	AISI 304
6	Red Binder Point	Brass
7	Blue Binder Point	Brass

Dimensions in mm

This data sheet is designed as a guide and should not be regarded as wholly accurate in every detail. We reserve the right to amend the specification of any product without notice.