



Cast Iron Valves



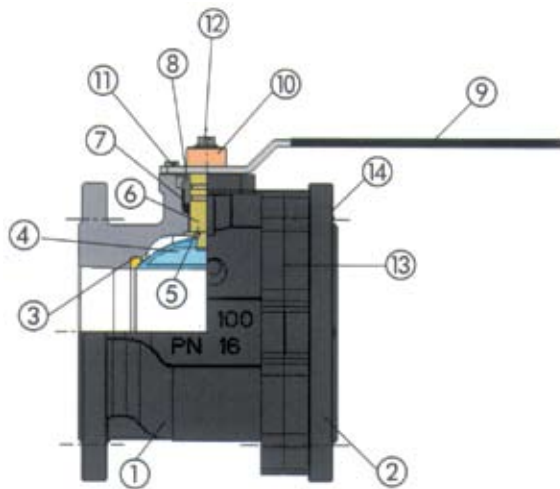
Product information



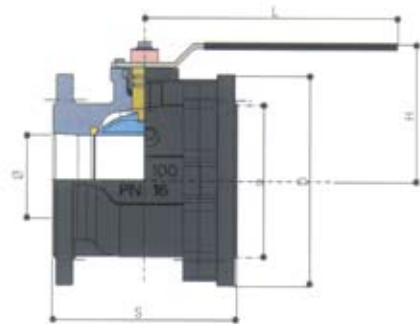
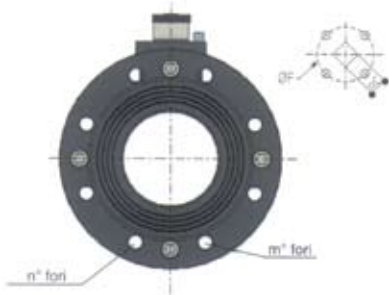
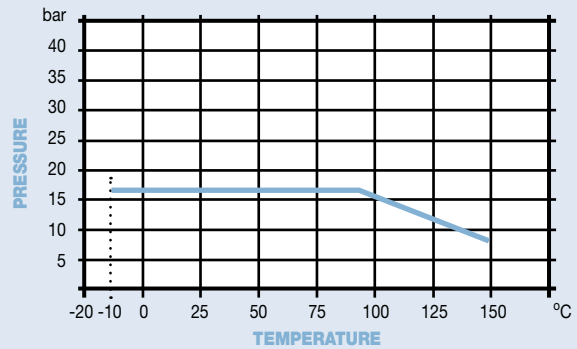
Cast Iron Ball Valve Flanged Ends

Features

- Flanged PN16
- PTFE Seals
- ISO 5211 Direct Mounting for Actuation
- 77 Brass Ball 78 Stainless Steel Ball
- Body GG25 Cast Iron



Pressure / Temperature



N.	Part Name	Materials
1	Body	Cast Iron
2	Flange	Cast Iron
3	Seat	PTFE
4	Ball	CP Brass / 304 Stainless Steel
5	Washer	PTFE
6	Stem	Steel 9SMnBb36
7	Stem Seat	PTFE
8	Packing Nut	Brass
9	Handle	Steel
10	Cap	Brass
11	Screw	Steel
12	Screw	Steel
13	O-Ring	HBNR
14	Screw	Steel

DN	20	25	32	40	50	65	80	100	125	150	200
ø	20	25	32	40	50	61	74	95	120	145	200
S	120	125	130	140	150	170	180	190	200	210	400
H	73	77	82	92	99	121	130	144	185	204	325
L	200	200	200	240	240	260	260	260	450	450	700
D	105	115	140	150	165	185	200	220	250	285	340
a	75	85	100	110	125	145	160	180	210	240	170
N° Holes	4	4	4	4	4	4	8	8	8	8	12
M° Holes	M12	M12	M16	M16	M16	M16	M16	M16	M16	M20	M20
Fl.ISO	F04	F04	F04	F05	F05	F07	F07	F07	F10	F10	
øf	42	42	42	50	50	70	70	70	102	102	
nC	9	9	9	14	14	17	17	17	22	22	
Torque	26	33	42	50	66	83	132	198	231	250	
Kgs	3.0	3.8	5.4	6.0	7.5	12.0	14.5	18.2	32.0	39.5	94.0

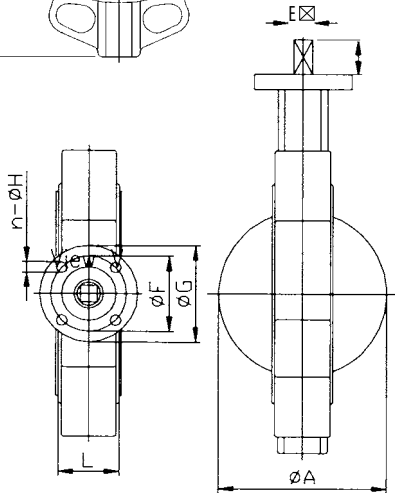
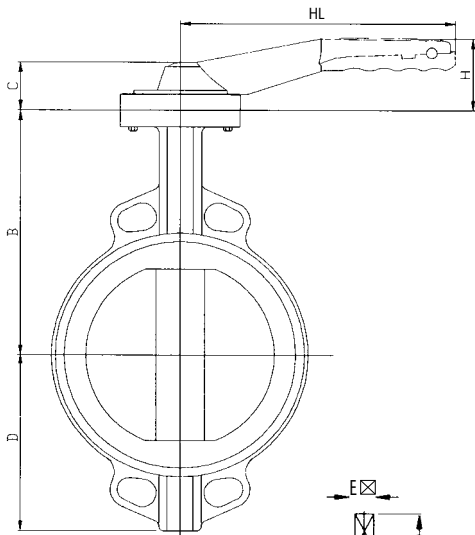
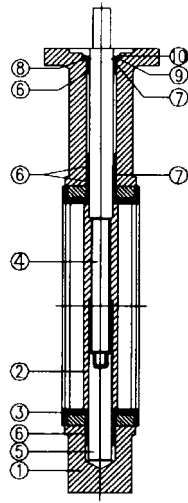
Technical Data

Maximum Pressure 16 Bar
Working Temperature -10°C to +150°C

Dimensions in mm

This data sheet is designed as a guide and should not be regarded as wholly accurate in every detail. We reserve the right to amend the specification of any product without notice.

WRAS APPROVED PRODUCT

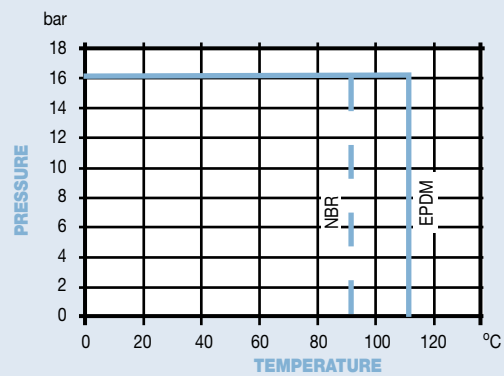


Ductile Iron Butterfly Valve Wafer Type

Features

- Conforms to BS EN 593 (BS 5155)
- Body - Ductile Iron GGG 40
- 316 Stainless Steel or Plated Ductile Iron Disc
- Epoxy Coat Finish
- Lockable Handle
- Universal Flange Mounting PN 16/10 and ASA 150
- ISO 5211 Direct Mounting for Actuation
- Art 115 only WRAS Approved

Pressure / Temperature



N. Part Name	Materials 110	Materials 115	Materials 120
1 Body	Ductile Iron GGG40	Ductile Iron GGG40	Ductile Iron GGG40
2 Disc	Nickel Plated GGG40	Stainless Steel 316	Stainless Steel 316
3 Seat	EPDM	EPDM	NBR
4 Upper Shaft	SS410	SS410	SS410
5 Lower Shaft	SS410	SS410	SS410
6 Bushing	PTFE	PTFE	PTFE
7 O-Ring	EPDM	EPDM	NBR
8 Half Ring	Stainless Steel	Stainless Steel	Stainless Steel
9 Washer	Stainless Steel	Stainless Steel	Stainless Steel
10 Retainer	Stainless Steel	Stainless Steel	Stainless Steel

DN	50	65	80	100	125	150	200	250	300
A	52.6	64.4	78.9	104.1	123.4	155.9	202.8	250.8	301.9
B	142	155	161	180	193	205	250	282	326
C	32	32	32	32	32	32	40	40	40
D	80	89	95	114	127	139	175	203	242
E ☒	11	11	11	11	14	14	17	22	22
F	70 F07	70 F07	70 F07	70 F07	70 F07	70 F07	102 F010	102 F010	102 F010
G	90	90	90	90	90	90	125	125	125
H	54.3	54.3	54.3	54.3	65.2	65.2	71	71	71
HL	205	205	205	205	254	254	359	359	359
L	43	46	46	52	56	56	60	68	78
W	10	10	10	12	14	14	17	22	24
SH	19	19	19	19	19	19	25	40	40
Torque	19	21	28	43	60	91	194	295	412
Kgs	2.35	2.75	3.05	4.70	5.50	6.75	11.60	20.40	29.10

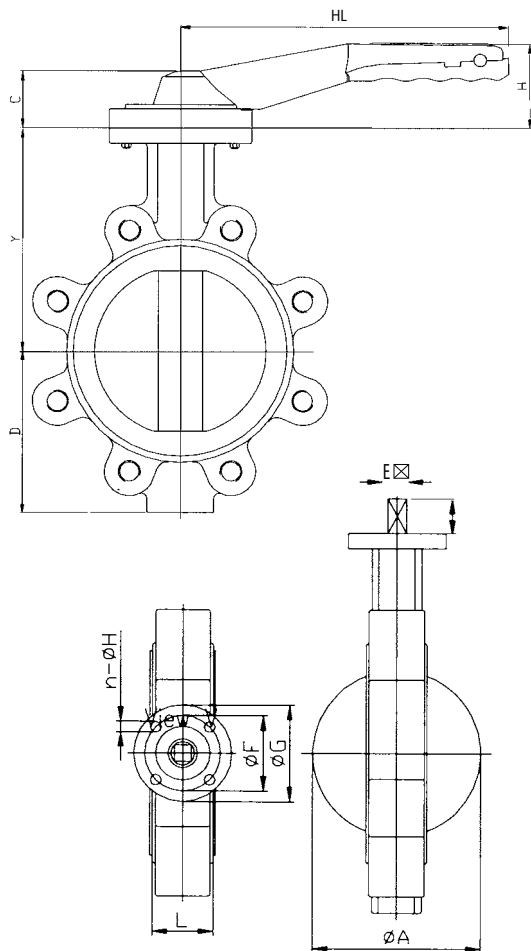
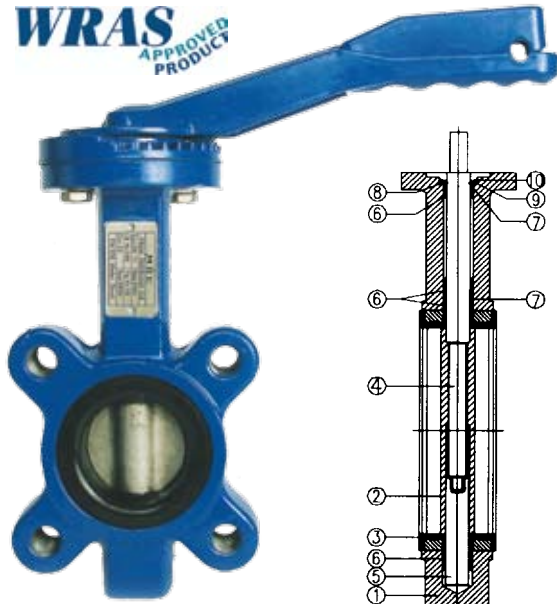
Technical Data

Maximum Pressure 16 Bar
 Working Temperature -20°C to +110°C - EPDM
 0°C to + 90°C - NBR

Dimensions in mm

This data sheet is designed as a guide and should not be regarded as wholly accurate in every detail. We reserve the right to amend the specification of any product without notice.

WRAS
APPROVED
PRODUCT



Technical Data

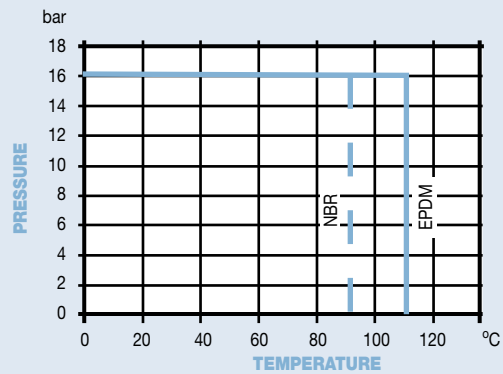
Maximum Pressure 16 Bar
 Working Temperature -20°C to +110°C - EPDM
 0°C to + 90°C - NBR

Ductile Iron Butterfly Valve Lugged & Tapped Type

Features

- Conforms to BS EN 593 (BS 5155)
- Body - Ductile Iron GGG 40
- 316 Stainless Steel or Plated Ductile Iron Disc
- Epoxy Coat Finish
- Lockable Handle
- ISO 5211 Direct Mounting for Actuation
- Flange Mounting PN16 only
- Art 135 only WRAS Approved

Pressure / Temperature



N.	Part Name	Materials 135	Materials 145
1	Body	Ductile Iron GGG40	Ductile Iron GGG40
2	Disc	Stainless Steel 316	Nickel Plated GGG40
3	Seat	EPDM	NBR
4	Upper Shaft	SS410	SS410
5	Lower Shaft	SS410	SS410
6	Bushing	PTFE	PTFE
7	O-Ring	EPDM	NBR
8	Half Ring	Stainless Steel	Stainless Steel
9	Washer	Stainless Steel	Stainless Steel
10	Retainer	Stainless Steel	Stainless Steel

DN	50	65	80	100	125	150	200	250	300
A	52.6	64.4	78.9	104.1	123.4	155.9	202.8	250.8	301.9
B	142	155	161	180	193	205	250	282	326
C	32	32	32	32	32	32	40	40	40
D	80	89	95	114	127	139	175	203	242
E ☒	11	11	11	11	14	14	17	22	22
F	70 F07	70 F07	70 F07	70 F07	70 F07	70 F07	102 F010	102 F010	102 F010
G	90	90	90	90	90	90	125	125	125
H	54.3	54.3	54.3	54.3	65.2	65.2	71	71	71
HL	205	205	205	205	254	254	359	359	359
L	43	46	46	52	56	56	60	68	78
W	10	10	10	12	14	14	17	22	24
SH	19	19	19	19	19	19	25	40	40
Torque	19	21	28	43	60	91	194	295	412
Kgs	3.55	3.95	5.25	7.00	8.65	10.05	18.15	26.75	35.50

Dimensions in mm

This data sheet is designed as a guide and should not be regarded as wholly accurate in every detail. We reserve the right to amend the specification of any product without notice.

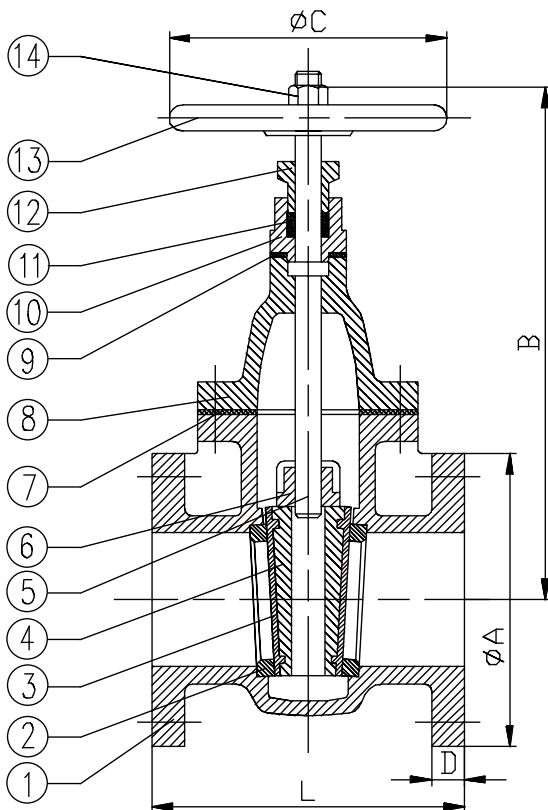
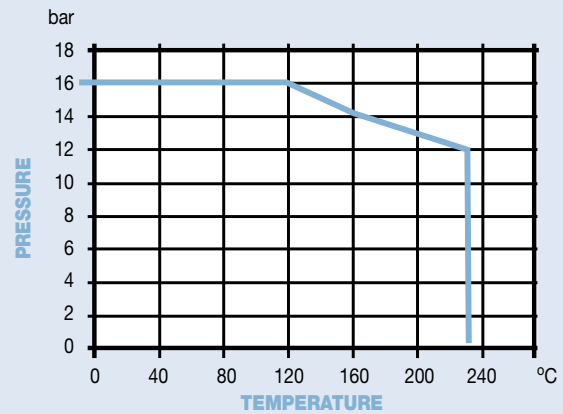
PN16 Cast Iron Gate Valve



Features

- Dimensions to BS5150 and BS EN 558-1
- Flanged BS EN 1092-2 PN16
- Stem: Stainless Steel
- Wedge Face Ring: Bronze
- Non Rising Stem
- Seat Ring: Bronze

Pressure / Temperature



Technical Data

Maximum Pressure 16 Bar
Working Temperature -10°C to +230°C

N.	Part Name	Materials
1	Body	Cast Iron
2	Seat Ring	Bronze
3	Wedge Face Ring	Bronze
4	Wedge	Cast Iron
5	Stem	Stainless Steel
6	Wedge Nut	Steel
7	Body Gasket	Graphite
8	Bonnet	Cast Iron
9	Stuffing Box Gasket	Graphite
10	Stuffing Box	Cast Iron
11	Packing	Graphite
12	Gland Follower	Cast Iron
13	Hand Wheel	Ductile Iron
14	Hand Wheel Nut	Brass

DN	50	65	80	100	125	150	200	250	300
A	165	185	200	220	250	285	340	405	460
B	290	303	344	385	459	505	621	725	835
C	160	160	180	200	224	250	355	355	450
D	20	20	22	24	26	26	30	32	32
L	178	190	203	229	254	267	292	330	356
Kgs	16.5	21.6	26.5	47.2	67.5	87.0	118.0	197.0	275.0

Dimensions in mm

This data sheet is designed as a guide and should not be regarded as wholly accurate in every detail. We reserve the right to amend the specification of any product without notice.

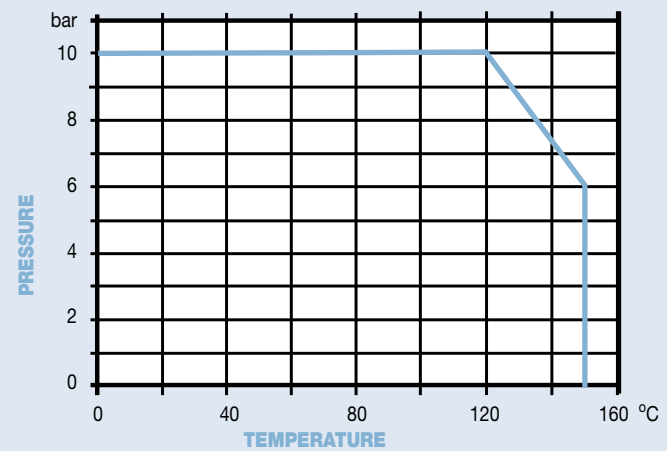
BS 10 Cast Iron Gate Valve



Features

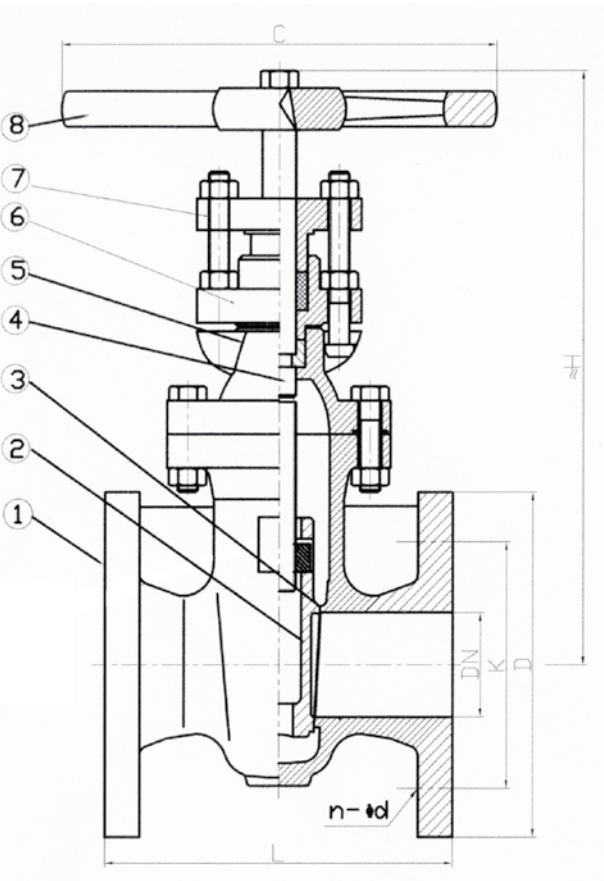
- Dimensions to BS3464
- Flanged BS 10 Table E or D
- Stem: Brass
- Wedge Face Ring: Bronze
- Seat Ring: Bronze
- Non Rising Stem

Pressure / Temperature



N.	Part Name	Materials
1	Body	Cast Iron
2	Disc Ring	Bronze
3	Seat Ring	Bronze
4	Stem	Brass
5	Bonnet	Cast Iron
6	Stuffing Box	Cast Iron
7	Gland	Cast Iron
8	Hand Wheel	Cast Iron

DN	50	65	80	100	125	150	200	250	300
L	146	159	165	172	190	210	241	273	305
D	152	165	184	216	254	279	337	406	457
K	114.3	127	146	178	210	235	292	356	406
C	180	180	200	250	280	280	340	340	400
H	290	310	340	370	455	470	620	725	775
n-ød	4-ø14.5	4-ø17.5	4-ø17.5	8-ø17.5	8-ø17.5	8-ø22.2	8-ø22.2	12-ø22.2	12-ø25.4
Kgs	14	18	22	28	42	53	77	123	152



Technical Data

Maximum Pressure 10 Bar
 Working Temperature -10°C to +150°C

Dimensions in mm

This data sheet is designed as a guide and should not be regarded as wholly accurate in every detail. We reserve the right to amend the specification of any product without notice.

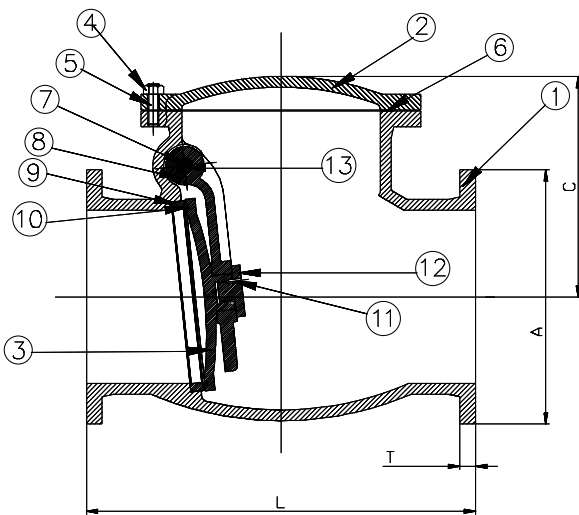
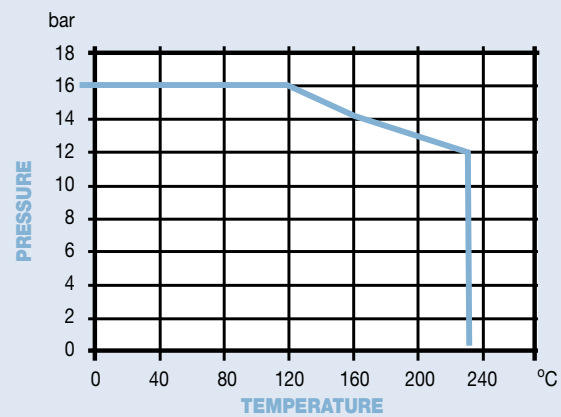
PN16 Cast Iron Swing Check Valve

Features

- Manufactured to BS EN 12334 (BS5153)
- Flanged BS EN 1092-2 PN16
- Body, Bonnet, Disc: Cast Iron
- Body Seat Ring: Bronze
- Disc Seat Ring: Bronze



Pressure / Temperature



Technical Data

Maximum Pressure 16 Bar
 Working Temperature -10°C to +230°C

N.	Part Name	Materials
1	Body	ASTM A126 B GG25
2	Bonnet	ASTM A126 B GG25
3	Disc	ASTM A126 B GG25
4	Nut	Carbon Steel Zinc Plated
5	Bolt	Carbon Steel Zinc Plated
6	Gasket	Graphite
7	Pin	Stainless Steel 304
8	Arm	ASTM A395
9	Seat	Bronze
10	Disc Ring	Bronze
11	Screws	Stainless Steel or Brass
12	Preventor	Stainless Steel or Brass
13	Plug	Carbon Steel Zinc Plated

DN	50	65	80	100	125	150	200	250	300
A	165	185	200	220	250	285	340	405	460
L	203	216	241	292	330	356	495	622	699
C	113	140	159	181	254	279	343	406	483
T	20	20	22	24	26	26	30	32	32
Kgs	11.6	17.5	21.4	37.0	56.2	72.4	122.7	201.5	291.0

Dimensions in mm

This data sheet is designed as a guide and should not be regarded as wholly accurate in every detail. We reserve the right to amend the specification of any product without notice.

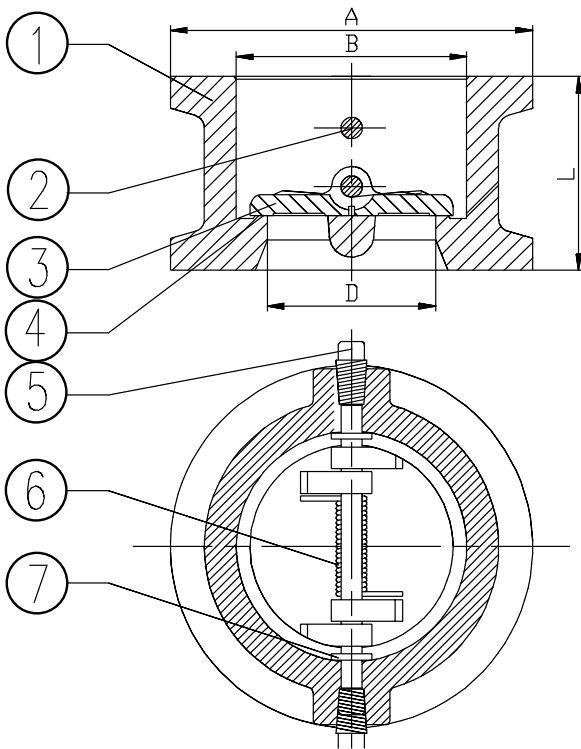
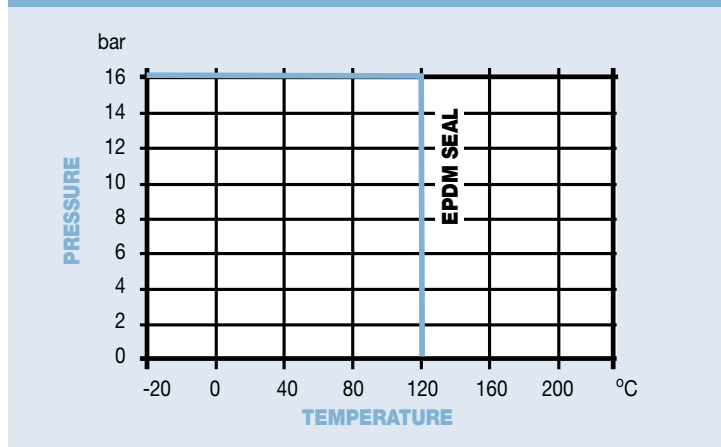


Cast Iron Dual Plate Wafer Check Valve

Features

- Universal Flange Mounting PN16/10 and ASA 150
- Stainless Steel Disc
- EPDM Seals
- GG 25 Body
- Epoxy Coat Finish

Pressure / Temperature



N.	Part Name	Materials
1	Body	Cast Iron ASTM A126 B
2	Shaft	Stainless Steel 316
3	Disc	Stainless Steel 316
4	Seat	EPDM
5	Plug	Stainless Steel
6	Spring	Stainless Steel 316
7	Washer	Stainless Steel or PTFE

DN	50	65	80	100	125	150	200	250	300
A	109	129	144	164	194	220	275	330	386
B	65	80	94	117	145	170	224	265	310
D	43	57	70	88	115	134	182	220	260
L	43	46	64	64	70	76	89	114	114
Kgs	1.5	2.4	3.6	5.7	7.3	9.0	17.0	26.0	42.0

Technical Data

Maximum Pressure 16 Bar
 Working Temperature -10°C to +120°C

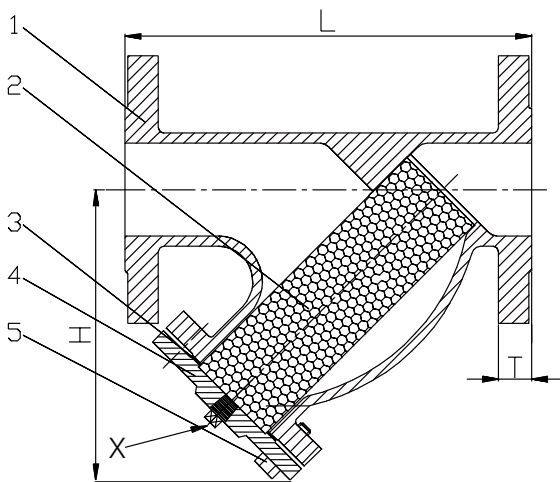
Dimensions in mm

This data sheet is designed as a guide and should not be regarded as wholly accurate in every detail. We reserve the right to amend the specification of any product without notice.

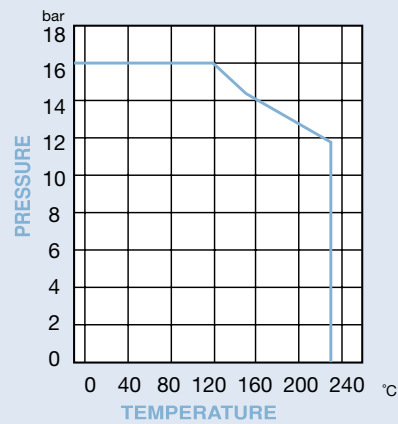
PN16 Cast Iron "Y" Strainer

Features

- Flanged BS EN 1092-2 PN16
- Body, Bonnet: Cast Iron
- Screen: AISI 304
- Drain Plug on the Bonnet



Pressure / Temperature



Technical Data

Maximum Pressure 16 Bar
Working Temperature -10°C to +230°C

N.	Part Name	Materials
1	Body	ASTM A126 B GG25
2	Screen	Stainless Steel 304
3	Gasket	Non-Asbestos
4	Cover	ASTM A126 B GG25
5	Nut	ASTM A194 2H

DN	50	65	80	100	125	150	200	250	300
H	166	190	162	181	248	282	350	490	550
L	230	290	310	350	400	480	600	730	850
T	20	20	22	22	24	24	26	32	32
X	1/2"NPT	1"NPT	1"NPT	1 1/4"NPT	1 1/4"NPT	1 1/2"NPT	1 1/2"NPT	2"NPT	2"NPT
Mesh	1.5mm	1.5mm	1.5mm	1.5mm	1.5mm	1.5mm	1.5mm	1.5mm	1.5mm
Kgs	11.5	16	16	23.5	33	46	77	138	190

Dimensions in mm

This data sheet is designed as a guide and should not be regarded as wholly accurate in every detail. We reserve the right to amend the specification of any product without notice.

VISION

Distributor