



Flexible Connectors



Product information

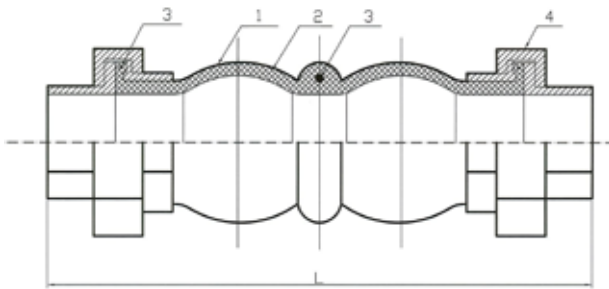




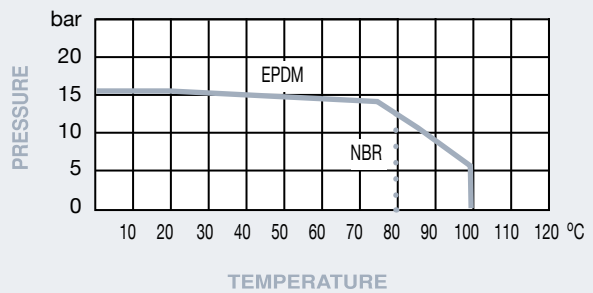
PN16 Screwed Flexible Connector

Features

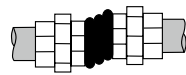
- Screwed BSP Taper BS21
- EPDM/NBR Body
- Galvanised Malleable Iron Union Ends
- Nylon Cord Fabric with Steel Reinforcement



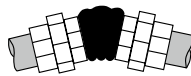
Pressure / Temperature



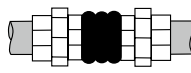
HD - Horizontal Displacement



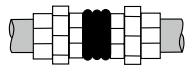
DA - Deflection Angular



Ext - Extension



Comp - Compression



DN	1/2"	3/4"	1"	1 1/4"	1 1/2"	2"	2 1/2"	3"
L	200	200	200	200	200	200	245	245
HD	22	22	22	22	22	22	24	24
DA	45°	45°	45°	45°	45°	45°	45°	45°
Ext	5.6	5.6	5.6	5.6	5.6	5.6	8.10	8.10
Comp	22	22	22	22	22	22	24	24
Kgs	0.70	0.90	1.15	1.40	1.65	2.25	3.25	4.20

Technical Data

Max Pressure 16 Bar

Working Temperature -20°C to +100°C EPDM
-20°C to +80°C NBR

N.	Part Name	Materials 400	Materials 410
1	Body	EPDM	NBR
2	Reinforcement	Nylon Cord Wire	Nylon Cord Wire
3	Pressure Ring	Steel Wire	Steel Wire
4	Union End	Malleable Iron	Malleable Iron

Dimensions in mm

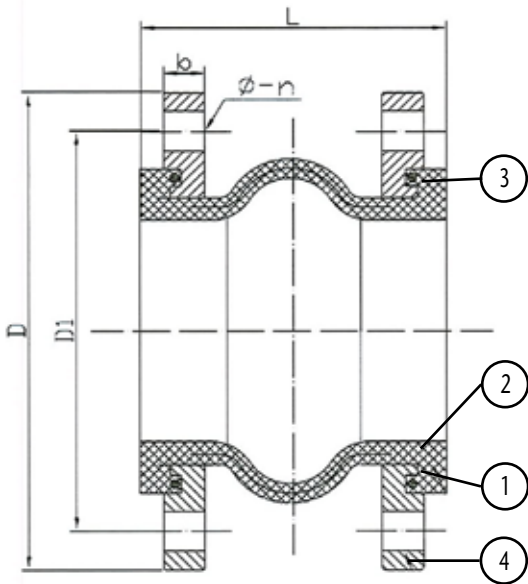
This data sheet is designed as a guide and should not be regarded as wholly accurate in every detail. We reserve the right to amend the specification of any product without notice.



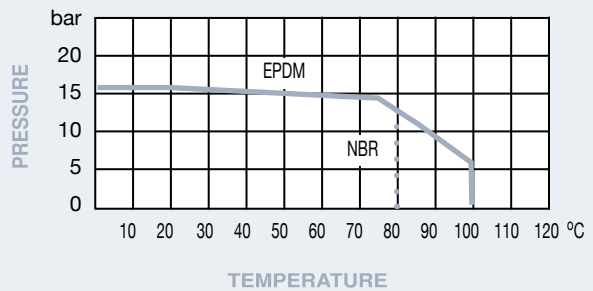
PN16 Flanged Flexible Connector

Features

- Flanged PN16 BS4504
- EPDM/NBR Body
- Zinc Plated Carbon Steel Flanges
- Nylon Cord Fabric with Steel Reinforcement



Pressure / Temperature

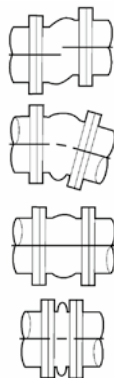


HD - Horizontal Displacement

DA - Deflection Angular

Ext - Extension

Comp - Compression



DN	1 1/4"	1 1/2"	2"	2 1/2"	3"	4"	5"	6"	8"	10"	12"
D	140	150	165	185	200	220	250	285	340	405	460
D1	100	110	125	145	160	180	210	240	295	355	410
b	16	16	18	18	20	20	22	22	24	26	28
L	130	130	130	130	130	130	130	130	130	130	130
Ø-n	18-4	18-4	18-4	18-4	18-8	18-8	18-8	22-8	22-12	26-12	26-12
HD	12	12	12	12	12	12	12	12	12	12	12
DA	15°	15°	15°	15°	15°	15°	15°	15°	15°	15°	15°
Ext	8	8	8	8	8	8	8	8	8	8	8
Comp	15	15	15	15	15	15	15	15	15	15	15
Kgs	1.94	2.14	2.67	3.14	3.57	4.10	5.56	6.70	8.90	9.96	15.93

Technical Data

Max Pressure 16 Bar

Working Temperature -20°C to +100°C EPDM
-20°C to +80°C NBR

N.	Part Name	Materials 420	Materials 430
1	Body	EPDM	NBR
2	Reinforcement	Nylon Cord Wire	Nylon Cord Wire
3	Pressure Ring	Steel Wire	Steel Wire
4	Flange	Carbon Steel	Carbon Steel

Dimensions in mm

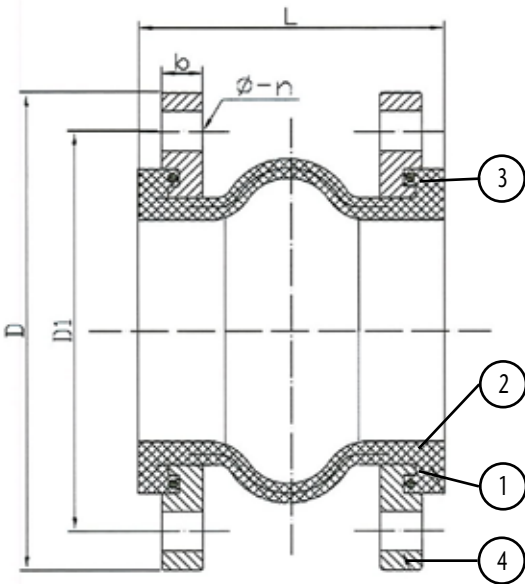
This data sheet is designed as a guide and should not be regarded as wholly accurate in every detail. We reserve the right to amend the specification of any product without notice.



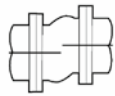
PN10 Flanged Flexible Connector

Features

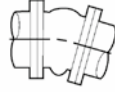
- Flanged PN10 BS4504
- EPDM/NBR Body
- Zinc Plated Carbon Steel Flanges
- Nylon Cord Fabric with Steel Reinforcement



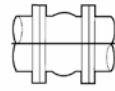
HD - Horizontal Displacement



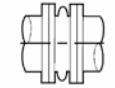
DA - Deflection Angular



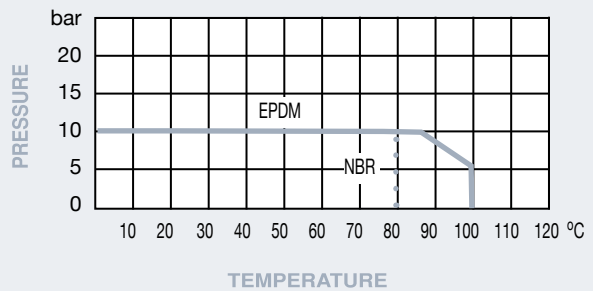
Ext - Extension



Comp - Compression



Pressure / Temperature



DN	1 1/4"	1 1/2"	2"	2 1/2"	3"	4"	5"	6"	8"	10"	12"
D	140	150	165	185	200	220	250	285	340	395	445
D1	100	110	125	145	160	180	210	240	295	350	400
b	16	16	18	18	20	20	22	22	24	26	26
L	130	130	130	130	130	130	130	130	130	130	130
Ø-n	18-4	18-4	18-4	18-4	18-8	18-8	18-8	22-8	22-8	22-12	22-12
HD	12	12	12	12	12	12	12	12	12	12	12
DA	15°	15°	15°	15°	15°	15°	15°	15°	15°	15°	15°
Ext	8	8	8	8	8	8	8	8	8	8	8
Comp	15	15	15	15	15	15	15	15	15	15	15
Kgs	1.94	2.14	2.67	3.14	3.57	4.10	5.56	6.70	8.90	9.96	15.93

Technical Data

Max Pressure 10 Bar

Working Temperature -20°C to +100°C EPDM
-20°C to +80°C NBR

N.	Part Name	Materials 425	Materials 435
1	Body	EPDM	NBR
2	Reinforcement	Nylon Cord Wire	Nylon Cord Wire
3	Pressure Ring	Steel Wire	Steel Wire
4	Flange	Carbon Steel	Carbon Steel

Dimensions in mm

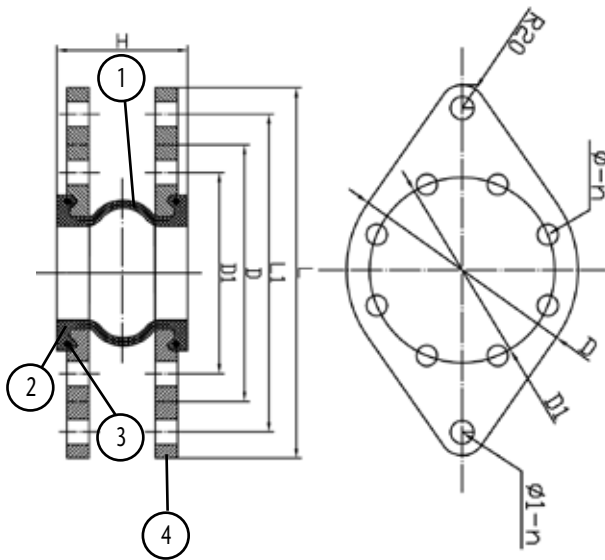
This data sheet is designed as a guide and should not be regarded as wholly accurate in every detail. We reserve the right to amend the specification of any product without notice.



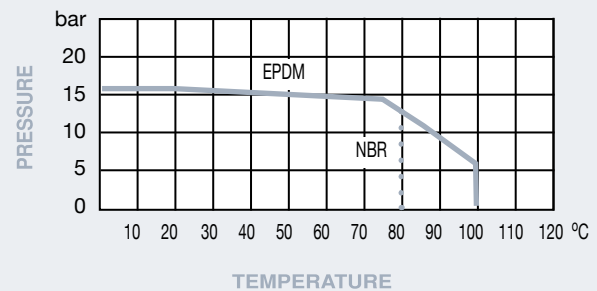
PN16 Tied Flanged Flexible Connector

Features

- Flanged PN16 BS4504
- EPDM/NBR Body
- Zinc Plated Carbon Steel Oval Flanges
- Nylon Cord Fabric with Steel Reinforcement



Pressure / Temperature

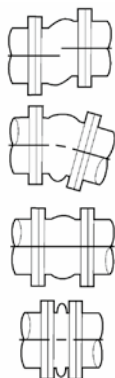


HD - Horizontal Displacement

DA - Deflection Angular

Ext - Extension

Comp - Compression



DN	32	40	50	65	80	100	125	150	200	250	300
L	222	232	247	267	286	306	336	371	440	505	560
L1	184	194	209	229	246	266	296	331	393	458	513
D	140	150	165	185	200	220	250	285	340	405	460
D1	100	110	125	145	160	180	210	240	295	355	410
H	130	130	130	130	130	130	130	130	130	130	130
Ø-n	18-4	18-4	18-4	18-4	18-8	18-8	18-8	22-8	22-12	26-12	26-12
Ø1-n	18-2	18-2	18-2	18-2	20-2	20-2	20-2	20-2	27-2	27-2	27-2
HD	12	12	12	12	12	12	12	12	12	12	12
DA	15°	15°	15°	15°	15°	15°	15°	15°	15°	15°	15°
Ext	8	8	8	8	8	8	8	8	8	8	8
Comp	15	15	15	15	15	15	15	15	15	15	15
Kgs	4.12	4.76	6.47	8.1	9.6	10.8	14.8	17.1	22.8	34.0	41.9

Technical Data

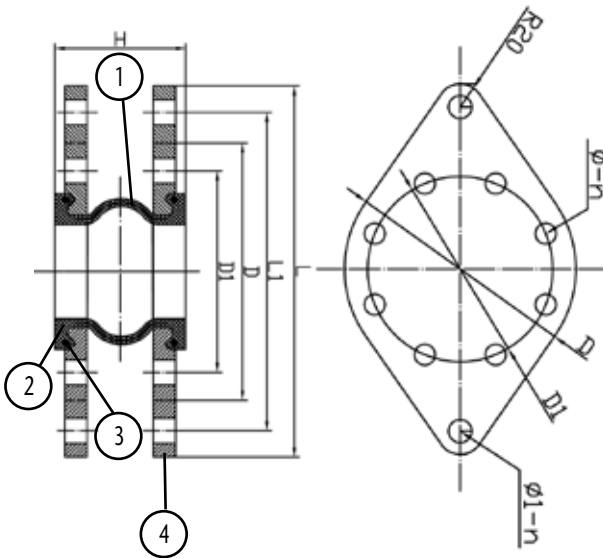
Max Pressure 16 Bar

Working Temperature -20°C to +100°C EPDM
-20°C to +80°C NBR

N.	Part Name	Materials 450	Materials 460
1	Body	EPDM	NBR
2	Reinforcement	Nylon Cord Wire	Nylon Cord Wire
3	Pressure Ring	Steel Wire	Steel Wire
4	Flange	Carbon Steel	Carbon Steel

Dimensions in mm

This data sheet is designed as a guide and should not be regarded as wholly accurate in every detail. We reserve the right to amend the specification of any product without notice.

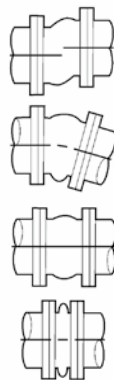


HD - Horizontal Displacement

DA - Deflection Angular

Ext - Extension

Comp - Compression

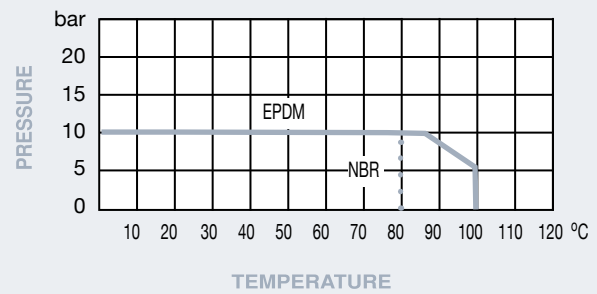


PN10 Tied Flanged Flexible Connector

Features

- Flanged PN10 BS4504
- EPDM/NBR Body
- Zinc Plated Carbon Steel Oval Flanges
- Nylon Cord Fabric with Steel Reinforcement

Pressure / Temperature



DN	32	40	50	65	80	100	125	150	200	250	300
L	222	232	247	267	286	306	336	371	432	495	545
L1	184	194	209	229	246	266	296	331	398	448	498
D	140	150	165	185	200	220	250	285	340	395	445
D1	100	110	125	145	160	180	210	240	295	350	400
H	130	130	130	130	130	130	130	130	130	130	130
Ø-n	18-4	18-4	18-4	18-4	18-8	18-8	18-8	22-8	22-8	22-12	22-12
Ø1-n	18-2	18-2	18-2	18-2	20-2	20-2	20-2	20-2	27-2	27-2	27-2
HD	12	12	12	12	12	12	12	12	12	12	12
DA	15°	15°	15°	15°	15°	15°	15°	15°	15°	15°	15°
Ext	8	8	8	8	8	8	8	8	8	8	8
Comp	15	15	15	15	15	15	15	15	15	15	15
Kgs	4.12	4.76	6.47	8.1	9.6	10.8	14.8	17.1	22.8	34.0	41.9

Technical Data

Max Pressure 10 Bar

Working Temperature -20°C to +100°C EPDM
-20°C to +80°C NBR

N.	Part Name	Materials 455	Materials 465
1	Body	EPDM	NBR
2	Reinforcement	Nylon Cord Wire	Nylon Cord Wire
3	Pressure Ring	Steel Wire	Steel Wire
4	Flange	Carbon Steel	Carbon Steel

Dimensions in mm

This data sheet is designed as a guide and should not be regarded as wholly accurate in every detail. We reserve the right to amend the specification of any product without notice.

Selection

Prior to installation check you have selected the correct flexible connector for the application pressure temperature and media requirements.

Inspection

Before installing flexible connectors they should be checked for any damage internally and externally paying particular attention to the mating face. Make sure the sealing face is clean and free of debris as this will prevent sealing with the mating flange.

Installation

Flexible connectors should be installed at their natural length. If gaps are being left in the pipework for retro fitting make sure this gap conforms to the exact natural length of the connector. Pipework should be aligned before installation the connector is not designed to compensate for poorly aligned pipework.

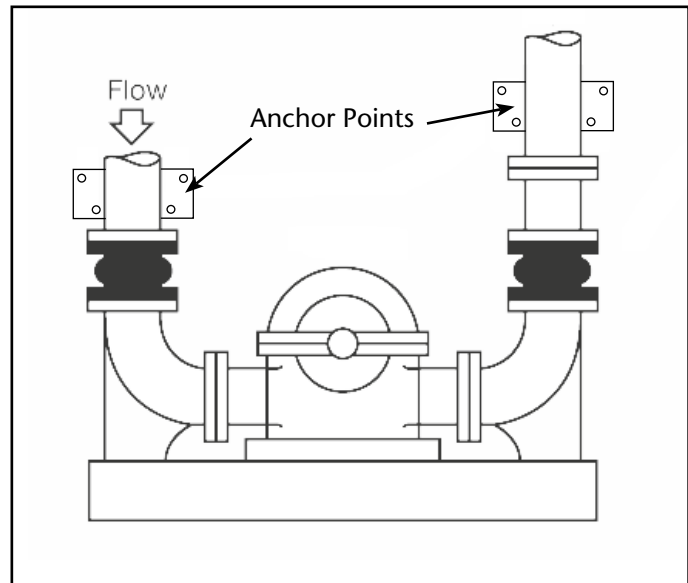
The correct mating flange should always be selected and the sealing face checked for debris and any sharp edges as this could result in damage to the rubber.

If faces of mating flanges have a different diameter a sealing gasket should be used to avoid damage to the rubber face.

Flange bolts must be fitted with the bolt head nearest the connector to avoid damage to the rubber. Bolts must be tightened in a gradual manner tightening opposite bolts in turn. Do not over tighten as this will result in leakage. It is prudent to check tighten the bolts after seven days.

Anchoring

It is essential that flexible connectors are anchored to protect adjacent pipework and plant. Fig 1 shows how to anchor pipework in close installation to pumps. Selection of tied rubber flexible connectors should be considered above 100mm when the pressure is greater than 2.5 bar.



Maintenance

Many years of trouble free installation can be achieved with properly installed flexible connectors. It is essential they are used within their temperature pressure and media limitations. Periodic inspection of the rubber is advised to check for deterioration and flange bolts checked for correct tightness. The rubber should never be painted as this could damage the rubber and lead to reduced performance and service life.

AMION



Certificate No. 1437B



Certificate No. 1437A

Distributor