

# Sensor Pockets for Clorius V-thermostats

8.3.41-D

GB-1

## Application

Sensor pockets of stainless steel can be supplied to all Clorius self-acting thermostats with rod sensors. They are used where it is impossible to empty the system or the tank.

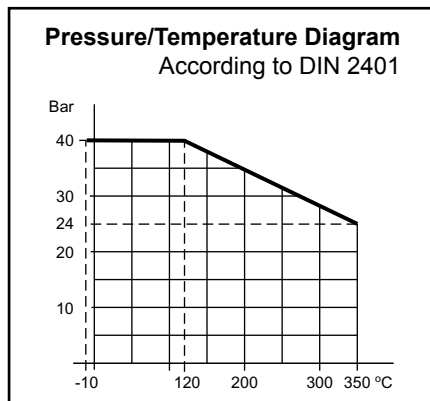
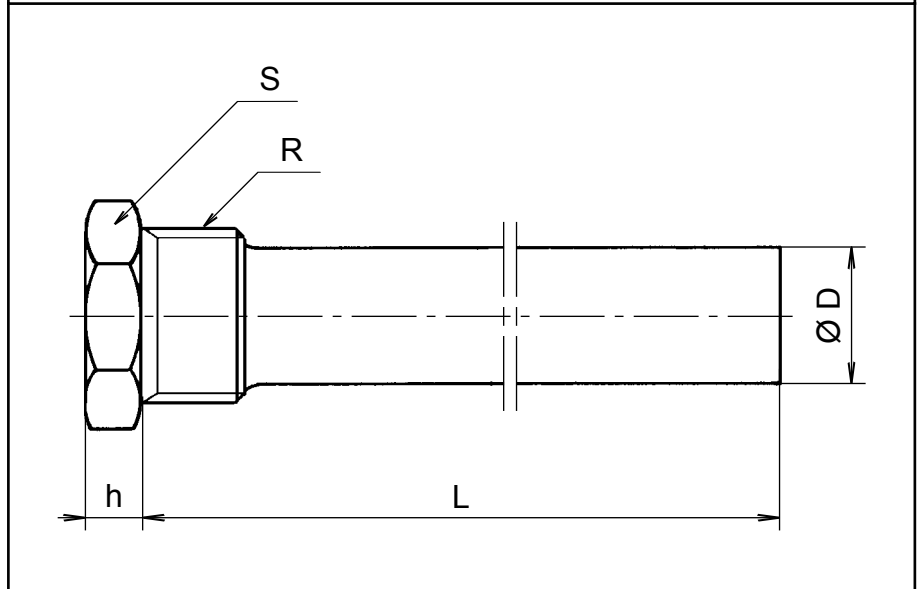
Use of sensor pockets imply delay of heat transfer to the rod sensors and thus a longer reaction time for the controllers. This is to some extent counteracted by filling up the sensor pockets with paste or oil.

## Mounting

The installation site for the sensor pocket is arbitrary when paste is applied. When using oil the sensor pocket must point somewhat downwards.

## Material

High alloy stainless steel.  
Werkstoff No. 1.4436.



For thermostat type	Clorius product number	Dimensions in mm				ISO 7/1
		Ø D	L	h	S	
V 2.05	3290069	25	215	9	36	R 1
V 4.03	3290182			10	50	R 1¼
V 4.05	3290077	25	390	10	50	R 1¼
V 4.10	3290085	34	512	10	50	R 1¼
V 8.09	3290093	34	740	12	80	R 2½
V 8.18	3290204	38	805	12	80	R 2½