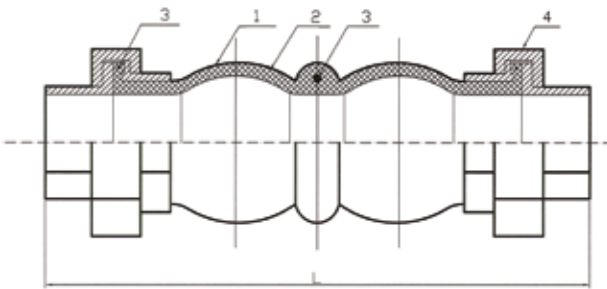




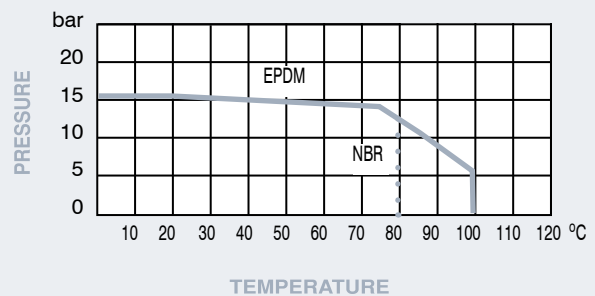
## PN16 Screwed Flexible Connector

### Features

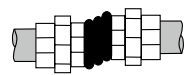
- Screwed BSP Taper BS21
- EPDM/NBR Body
- Galvanised Malleable Iron Union Ends
- Nylon Cord Fabric with Steel Reinforcement



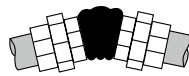
### Pressure / Temperature



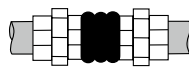
HD - Horizontal Displacement



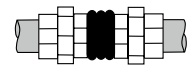
DA - Deflection Angular



Ext - Extension



Comp - Compression



DN	1/2"	3/4"	1"	1 1/4"	1 1/2"	2"	2 1/2"	3"
L	200	200	200	200	200	200	245	245
HD	22	22	22	22	22	22	24	24
DA	45°	45°	45°	45°	45°	45°	45°	45°
Ext	5.6	5.6	5.6	5.6	5.6	5.6	8.10	8.10
Comp	22	22	22	22	22	22	24	24
Kgs	0.70	0.90	1.15	1.40	1.65	2.25	3.25	4.20

### Technical Data

Max Pressure 16 Bar  
 Working Temperature -20°C to +100°C EPDM  
 -20°C to +80°C NBR

N.	Part Name	Materials 400	Materials 410
1	Body	EPDM	NBR
2	Reinforcement	Nylon Cord Wire	Nylon Cord Wire
3	Pressure Ring	Steel Wire	Steel Wire
4	Union End	Malleable Iron	Malleable Iron

Dimensions in mm

This data sheet is designed as a guide and should not be regarded as wholly accurate in every detail. We reserve the right to amend the specification of any product without notice.