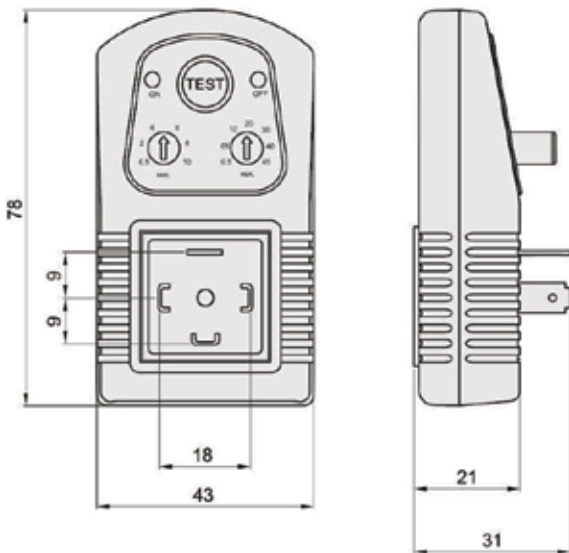


PUT Timer



Features

- Used to control Albion's range of solenoid valves.
- Range 0.5 to 10 seconds on, 30 seconds to 45 mins off.
- LED light to indicate timing

Coils & Plugs

COIL - SLPC



24, 110, 230VAC
12, 24VDC

Orifice: 14.7
L x W x H
38.5x29x42mm

COIL - SLP-HC



Type A
24VDC
110, 230VAC
Type B
12VDC
24VAC

Orifice: 16.3
L x W x H
54x38.5x40mm

COIL - ZSC-2D



Type A
110, 230VAC

Orifice: Ø20.3
63OD x 50mm

Type B
24VAC, 12, 24VDC

Orifice: Ø20.3
73OD x 50mm

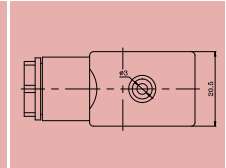
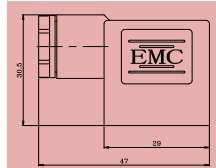
COIL - THP-C



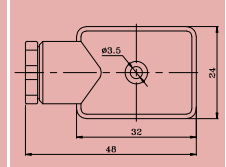
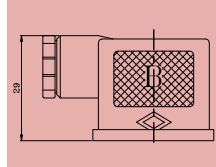
24, 110, 230VAC
24VDC

Orifice: Ø16.3
50OD x 41mm

PLUG - NAMUR SOLENOID



PLUG - SLP/ZS RANGES



PLUG - THP RANGE

