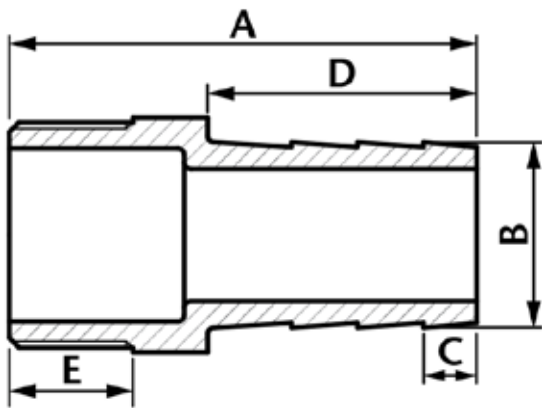


Hose Adaptor



DN	A	B	C	D	E	Kgs
1/4"	42	9	7	23	12.8	0.021
3/8"	47.8	10	7.5	25	15	0.035
1/2"	60.5	15	8	35	17	0.060
3/4"	70	20.5	10	42.5	18	0.104
1"	82	27	12	52	19	0.175
1 1/4"	83	34	12	51	20.5	0.231
1 1/2"	90.4	40	13	57	21.5	0.311
2"	108	52.3	15.5	69.5	25.5	0.512
2 1/2"	132	65.5	20	87	30	0.900 NEW
3"	145	78	23.5	97	33	1.190 NEW
4"	154	103.5	24	104	36	1.700 NEW

- Made from CF8M (316) Stainless Steel material and conform to ISO 4144 standard.
- Threads are to ISO 7-1 (DIN2999) BSPP Female, BSPT Male.
- Material certificates available on request.
- Pressure temperature ratings. See table below.

Temperature (°C)	Non-shock maximum working pressure (bar)
-20 to 40	20
100	16.5
150	15
200	14
220	13.5

- NOTE 1 Pressure for intermediate temperatures may be determined by the interpolation method.
- NOTE 2 Temperatures indicated are those of internal fluid.
- NOTE 3 Piping loads, stresses and moments are not taken into account.

- Tested & inspected prior to despatch.
- 12 month warranty from date of installation.
- Manufactured in accordance with ISO9001:2008 quality system.