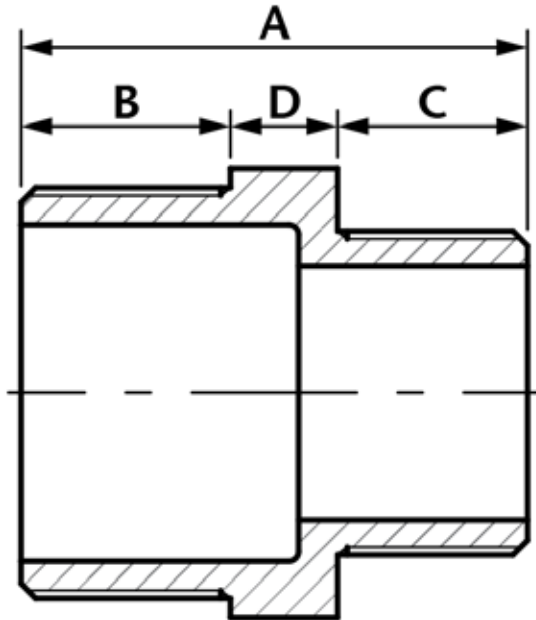


Reducing Hexagon Nipple



DN	A	B	C	D	Kgs
1/4" x 1/8"	30	13	11	6	0.017
3/8" x 1/4"	35	15	13	7	0.032
1/2" x 1/4"	39	17	14	8	0.045
1/2" x 3/8"	41	17	14	10	0.047
3/4" x 1/2"	43.5	18	17	8.5	0.074
1" x 1/2"	47	18.5	17	11.5	0.106
1" x 3/4"	48	18.5	18	11.5	0.105
1 1/4" x 1/2"	49.5	21	17	11.5	0.159
1 1/4" x 3/4"	51	21	18	12	0.153
1 1/4" x 1"	52	21	19.5	11.5	0.174
1 1/2" x 3/4"	52.3	22	18	12.3	0.220
1 1/2" x 1"	53	22	19	12	0.213
1 1/2" x 1 1/4"	55	22	21	12	0.217
2" x 1"	57.7	26	19	12.7	0.323
2" x 1 1/4"	60.5	26	21.5	13	0.322
2" x 1 1/2"	60.5	26	22	12.5	0.326
2 1/2" x 2"	70.5	30.5	26	14	0.606
3" x 2"	73	33	26	14	0.732
3" x 2 1/2"	77.5	33	30.5	14	0.824
4" x 2"	80.5	36	30.5	14	1.005
4" x 3"	83	36	33	14	1.187

- Made from CF8M (316) Stainless Steel material and conform to ISO 4144 standard.
- Threads are to ISO 7-1 (DIN2999) BSPP Female, BSPT Male.
- Material certificates available on request.
- Pressure temperature ratings. See table below.

Temperature (°C)	Non-shock maximum working pressure (bar)
-20 to 40	20
100	16.5
150	15
200	14
220	13.5

NOTE 1 Pressure for intermediate temperatures may be determined by the interpolation method.

NOTE 2 Temperatures indicated are those of internal fluid.

NOTE 3 Piping loads, stresses and moments are not taken into account.

- Tested & inspected prior to despatch.
- 12 month warranty from date of installation.
- Manufactured in accordance with ISO9001:2008 quality system.