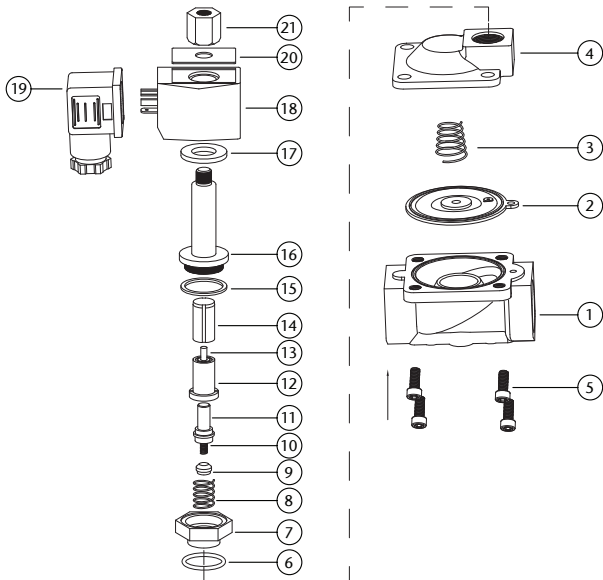


Parts Diagram



N.	Component	Material
1	Valve Body	Brass/Stainless Steel 316
2	Diaphragm	NBR/EPDM/Viton
3	Diaphragm Spring	Stainless Steel 304
4	Valve Cover	Brass/Stainless Steel 316
5	Bolt	Stainless Steel 302
6	O Ring	NBR/EPDM/Viton
7	Midbody	Brass/Stainless Steel 316
8	Spring	Stainless Steel 304
9	Mandril Seal	NBR/EPDM/Viton
10	Spring	Stainless Steel 304
11	Mandril	Stainless Steel 304
12	Fixed Amature	Stainless Steel 1J117
13	Pole	Stainless Steel 304
14	Moving Amature	Stainless Steel 1J117
15	Plunger Tube Seal	PTFE
16	Plunger Tube Unit	Stainless Steel 304 + 1J117
17	Baseplate	Plated Steel
18	Coil	Enamelled Wire
19	Plug	Nylon
20	Plate	Aluminium
21	Lock Nut	Stainless Steel 302

Available in 230VAC, 110VAC
12VDC, 24VDC, 24VAC

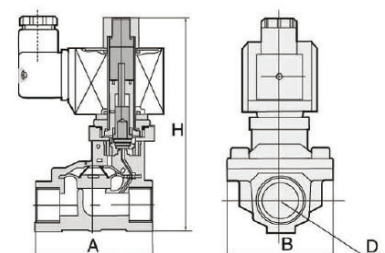
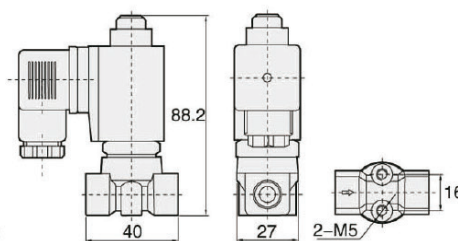
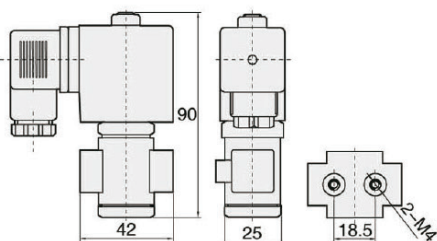
Thread standard: ISO 228/1

Main Dimensions

Orifice: 1mm to 2.5mm
Port: 1/8" & 1/4"

Orifice: 3mm
Port: 1/8" & 1/4"

Large Orifice
See Table Opposite



2/2 Solenoid Valve Normally Open

Valve Specification

Port Size (G)	Orifice	CV Value	Pressure Difference (Bar)				Max. Temp. (°C)	VA AC 230V	W DC 24V	Diaphragm	Main Dimension
			Min.	Max. Working Pressure							AxBxH
				Air / Gas	Water / Hot Liquid	Light Oil ≤20CST					
1/8"	1	0.04	0	30	30	25	80	22	13	NBR	
	1	0.04	0	30	30	-	120	22	13	EPDM	
	1	0.04	0	30	30	25	120	22	13	VITON	
	1.5	0.09	0	20	20	15	80	22	13	NBR	
	1.5	0.09	0	20	20	-	120	22	13	EPDM	
	1.5	0.09	0	20	20	15	120	22	13	VITON	
	2.5	0.2	0	15	15	12	80	22	13	NBR	
	2.5	0.2	0	15	15	-	120	22	13	EPDM	
	2.5	0.2	0	15	15	12	120	22	13	VITON	
	3	0.25	0	12	12	10	80	22	13	NBR	
	3	0.25	0	12	12	-	120	22	13	EPDM	
	3	0.25	0	12	12	10	120	22	13	VITON	
1/4"	1	0.04	0	30	30	25	80	22	13	NBR	
	1	0.04	0	30	30	-	120	22	13	EPDM	
	1	0.04	0	30	30	25	120	22	13	VITON	
	1.5	0.09	0	20	20	15	80	22	13	NBR	
	1.5	0.09	0	20	20	-	120	22	13	EPDM	
	1.5	0.09	0	20	20	15	120	22	13	VITON	
	2.5	0.2	0	15	15	12	80	22	13	NBR	
	2.5	0.2	0	15	15	-	120	22	13	EPDM	
	2.5	0.2	0	15	15	12	120	22	13	VITON	
	3	0.25	0	12	12	10	80	22	13	NBR	
	3	0.25	0	12	12	-	120	22	13	EPDM	
	3	0.25	0	12	12	10	120	22	13	VITON	
3/8"	13	4.5	0.5	8	8	7	80	33	32	NBR	66x48x124
	13	4.5	0.5	8	8		120	33	32	EPDM	66x48x124
	13	4.5	0.5	8	8	7	120	33	32	VITON	66x48x124
1/2"	13	4.5	0.5	8	8	7	80	33	32	NBR	66x48x124
	13	4.5	0.5	8	8		120	33	32	EPDM	66x48x124
	13	4.5	0.5	8	8	7	120	33	32	VITON	66x48x124
3/4"	20	7.6	0.5	8	8	7	80	33	32	NBR	75x58x130
	20	7.6	0.5	8	8		120	33	32	EPDM	75x58x130
	20	7.6	0.5	8	8	7	120	33	32	VITON	75x58x130
1"	25	12	0.5	8	8	7	80	33	32	NBR	96x70x143
	25	12	0.5	8	8		120	33	32	EPDM	96x70x143
	25	12	0.5	8	8	7	120	33	32	VITON	96x70x143
1.1/4"	35	22	0.5	8	8	7	80	33	32	NBR	131x96x158
	35	22	0.5	8	8		120	33	32	EPDM	131x96x158
	35	22	0.5	8	8	7	120	33	32	VITON	131x96x158
1.1/2"	40	30	0.5	8	8	7	80	33	32	NBR	131x96x158
	40	30	0.5	8	8		120	33	32	EPDM	131x96x158
	40	30	0.5	8	8	7	120	33	32	VITON	131x96x158
2"	50	48	0.5	8	8	7	80	33	32	NBR	165x120x179
	50	48	0.5	8	8		120	33	32	EPDM	165x120x179
	50	48	0.5	8	8	7	120	33	32	VITON	165x120x179
1" Flange Connection	25	12	0.5	8	8	7	80	33	32	NBR	134x110x172
	25	12	0.5	8	8		120	33	32	EPDM	134x110x172
	25	12	0.5	8	8	7	120	33	32	VITON	134x110x172
1.1/4" Flange Connection	35	22	0.5	8	8	7	80	33	32	NBR	160x135x187
	35	22	0.5	8	8		120	33	32	EPDM	160x135x187
	35	22	0.5	8	8	7	120	33	32	VITON	160x135x187
1.1/2" Flange Connection	40	30	0.5	8	8	7	80	33	32	NBR	160x145x192
	40	30	0.5	8	8		120	33	32	EPDM	160x145x192
	40	30	0.5	8	8	7	120	33	32	VITON	160x145x192
2" Flange Connection	50	48	0.5	8	8	7	80	33	32	NBR	200x160x219
	50	48	0.5	8	8		120	33	32	EPDM	200x160x219
	50	48	0.5	8	8	7	120	33	32	VITON	200x160x219

Please refer to our price list for stocked items

Dimensions in mm

This data sheet is designed as a guide and should not be regarded as wholly accurate in every detail. We reserve the right to amend the specification of any product without notice.