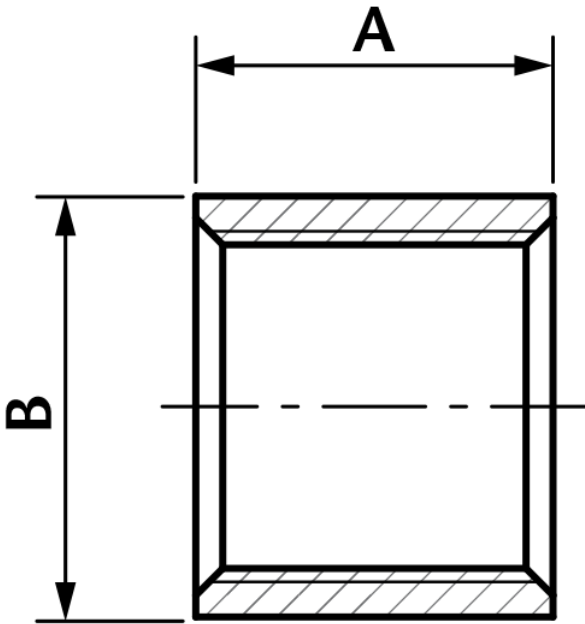


## Half Socket OD Machined



| DN     | A    | B     | Kgs   |
|--------|------|-------|-------|
| 1/8"   | 9    | 13.5  | 0.005 |
| 1/4"   | 13   | 16.7  | 0.011 |
| 3/8"   | 13   | 20.4  | 0.014 |
| 1/2"   | 16   | 24.9  | 0.022 |
| 3/4"   | 18   | 30    | 0.036 |
| 1"     | 21   | 37.8  | 0.052 |
| 1 1/4" | 23.5 | 47    | 0.086 |
| 1 1/2" | 23.5 | 53    | 0.098 |
| 2"     | 27.5 | 65.7  | 0.152 |
| 2 1/2" | 31.5 | 82    | 0.250 |
| 3"     | 34.5 | 95.8  | 0.367 |
| 4"     | 40.5 | 121.5 | 0.533 |

- Made from CF8M (316) Stainless Steel material and conform to **ISO 4144** standard.
- Threads are to ISO 7-1 (DIN2999) BSPP Female, BSPT Male.
- Material certificates available on request.
- Pressure temperature ratings. See table below.

| Temperature (°C) | Non-shock maximum working pressure (bar) |
|------------------|--|
| -20 to 40        | 20                                       |
| 100              | 16.5                                     |
| 150              | 15                                       |
| 200              | 14                                       |
| 220              | 13.5                                     |

NOTE 1 Pressure for intermediate temperatures may be determined by the interpolation method.

NOTE 2 Temperatures indicated are those of internal fluid.

NOTE 3 Piping loads, stresses and moments are not taken into account.

- Tested & inspected prior to despatch.
- 12 month warranty from date of installation.
- Manufactured in accordance with ISO9001:2008 quality system.