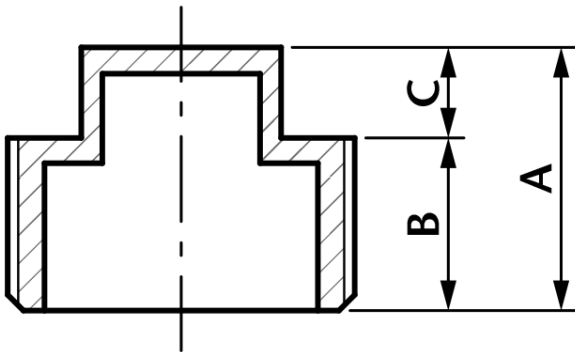


## Square Head Plug



DN	A	B	C	Kgs
1/8"	11	6.7	4.3	0.005
1/4"	16	9.6	6.4	0.009
3/8"	16	9.8	6.2	0.012
1/2"	22.6	13.6	9	0.030
3/4"	25	15	10	0.039
1"	26	15	11	0.056
1 1/4"	29	18	11	0.089
1 1/2"	30	18	12	0.112
2"	35	22	13	0.170
2 1/2"	40	25	15	0.347
3"	42	27	15	0.424
4"	52	33	19	0.899

- Made from CF8M (316) Stainless Steel material and conform to **ISO 4144** standard.
- Threads are to ISO 7-1 (DIN2999) BSPP Female, BSPT Male.
- Material certificates available on request.
- Pressure temperature ratings. See table below.

Temperature (°C)	Non-shock maximum working pressure (bar)
-20 to 40	20
100	16.5
150	15
200	14
220	13.5

NOTE 1 Pressure for intermediate temperatures may be determined by the interpolation method.

NOTE 2 Temperatures indicated are those of internal fluid.

NOTE 3 Piping loads, stresses and moments are not taken into account.

- Tested & inspected prior to despatch.
- 12 month warranty from date of installation.
- Manufactured in accordance with ISO9001:2008 quality system.