

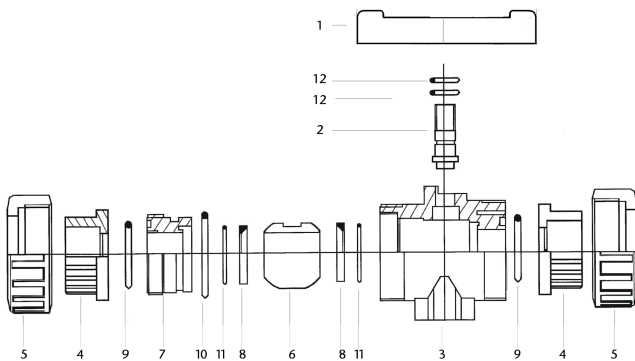
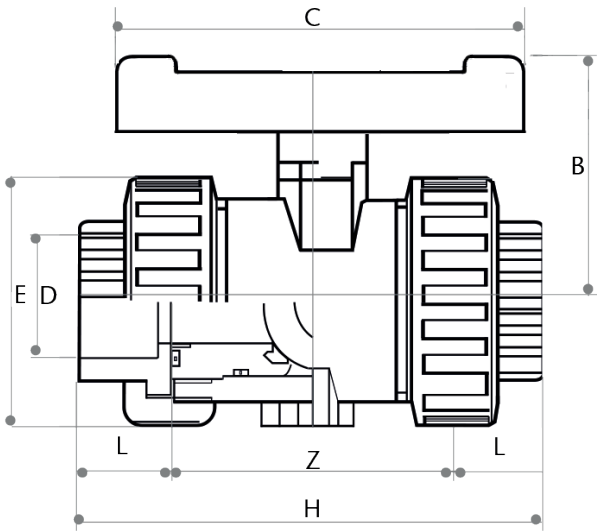
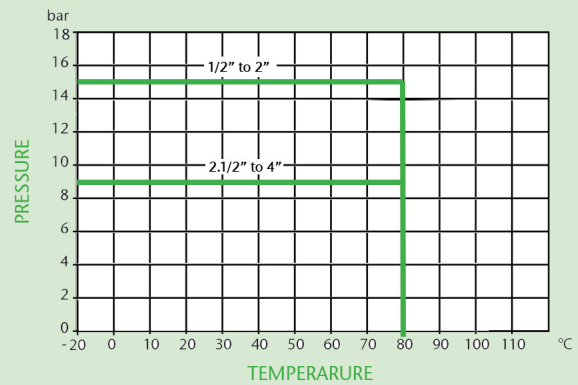


## ABS Industrial Double Union Ball Valve

### Features

- Solvent Weld Ends
- EPDM Seals
- Removable Ball

### Pressure/Temperature



DN	1/2"	3/4"	1"	1 1/4"	1 1/2"	2"	2 1/2"	3"	4"
E	50	60	68	80	94	115	168	168	210
B	51	58	65	76	88	104	137	138	166
L	17	20	23	27	31	38	44	51	63
Z	46	52	60	68	78	93	139	139	160
H	78	90	104	120	140	169	227	242	282
C	65	70	82	92	105	123	168	168	190
Kgs	0.11	0.16	0.24	0.35	0.58	0.97	2.55	2.63	4.77

Parts No.	Components	Materials
1	Handle	PVC
2	Stem	ABS
3	Body	ABS
4	Union End	ABS
5	Union Nut	ABS
6	Ball	ABS
7	Sealing Bush	ABS
8	Ball Seat	PTFE
9	Union O-ring	EPDM
10	O-ring sealing bush	EPDM
11	O-ring ball seat	EPDM
12	O-ring stem	EPDM

### Technical Data

Max Pressure	15 Bar Rated (1/2" to 2") 9 Bar Rated (2 1/2" to 4")
Working Temperature	-20°C to +80°C

Dimensions in mm

This data sheet is designed as a guide and should not be regarded as wholly accurate in every detail. We reserve the right to amend the specification of any product without notice.