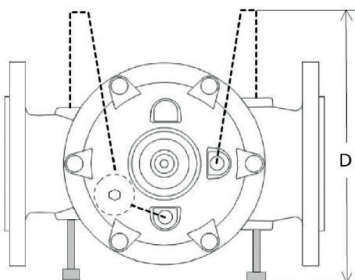
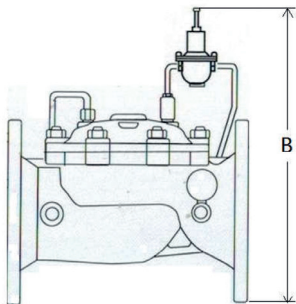
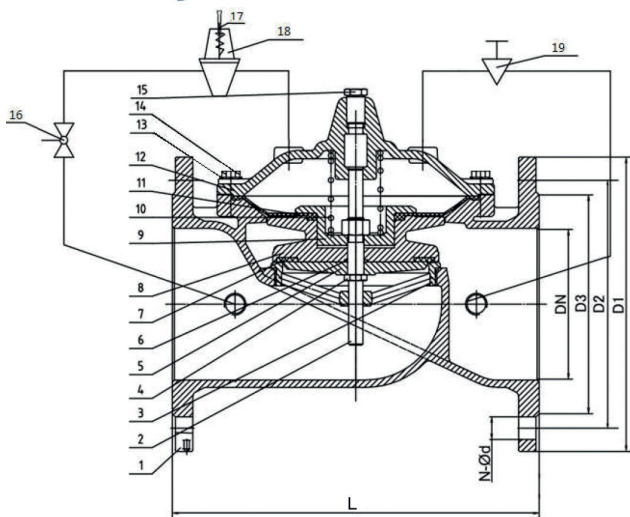
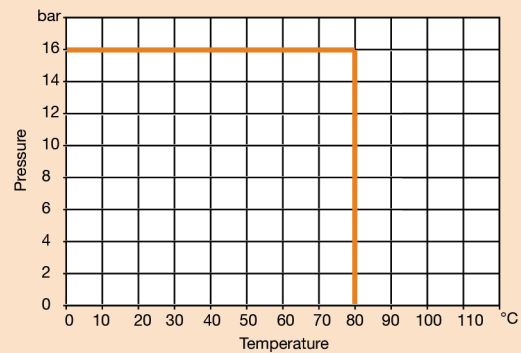


PN16 Adjustable Pressure Reducing Valve

Features

- Automatic Control Valve
- Suitable for potable water applications
- Pressure Adjusted by Integral Pilot Valve
- Conforms to BS EN 558-1 Series 10
- Flange Conforms to BS EN 1092 PN16
- Available flanged PN25

Pressure/Temperature



DN	50	65	80	100	125	150	200	250	300
D1	165	185	200	220	250	285	340	405	460
D2	125	145	160	180	210	240	295	355	410
D3	99	118	132	156	184	211	266	319	370
N-Ød	4-19	4-19	8-19	8-19	8-19	8-23	12-23	12-28	12-28
L	203	216	241	292	330	356	495	622	698
B	310	325	380	400	420	435	620	670	720
D	295	310	325	340	370	400	460	500	550
Kgs	12	13	18	22	28	33	100	178	218

N.	Part Name	Materials
1	Body	Ductile Iron
2	Stem	Stainless Steel 304
3	Seat	Stainless Steel 304
4	Stem Lock Nut	Stainless Steel 304
5	Sealing Ring Retaining Plate	Stainless Steel 304
6	O-Ring	EPDM
7	Sealing Ring	EPDM
8	Disc	Ductile Iron
9	Diaphragm Press Sleeve	Stainless Steel 304
10	Spring	Stainless Steel 304
11	Diaphragm	EPDM
12	Cover	Ductile Iron
13	Washer	Stainless Steel 304
14	Bolt	Stainless Steel 304
15	Threaded Plug	Stainless Steel 304
16	Ball Valve	Brass
17	Lockable Adjusting Bolt	Stainless Steel 304
18	Pilot Valve	Brass
19	Needle Valve	Brass

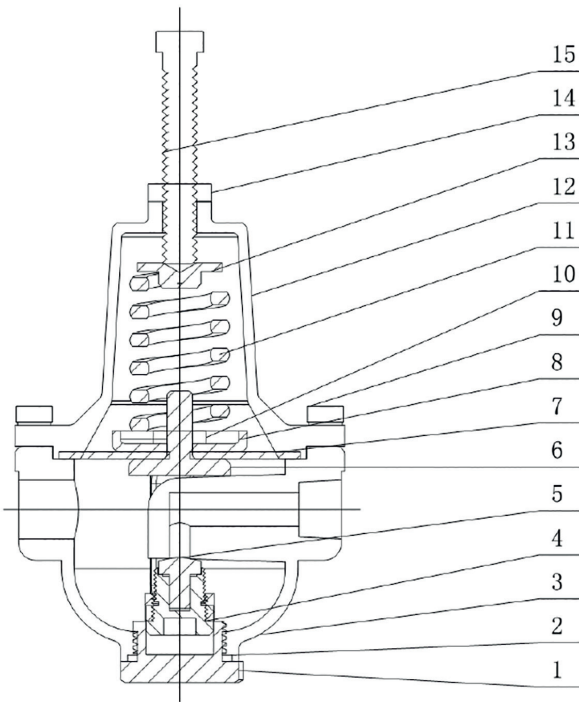
Technical Data

Max Pressure	16 Bar
Working Temperature	0°C to +80°C

Dimensions in mm

This data sheet is designed as a guide and should not be regarded as wholly accurate in every detail. We reserve the right to amend the specification of any product without notice.

Pilot Valve Detail



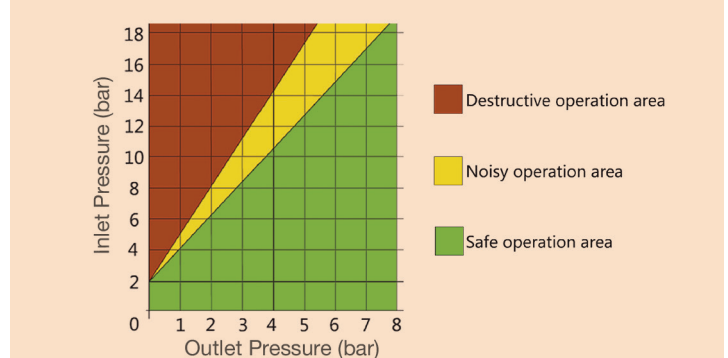
Fitted with standard Pilot Valve
1.40 to 7.25 Bar (20 to 105 PSI)
Factory set to 3.5 Bar (50 PSI)

Other Pilot Valves available
0.70 to 5.20 Bar (10 to 70 PSI)
2.10 to 18.00 Bar (30 to 261 PSI)

Pilot Valve

N.	Part Name	Materials
1	Threaded Cap	Brass
2	O-Ring	EPDM
3	Body	Brass
4	Seat	Brass
5	Disc	EPDM
6	Bracket	Stainless Steel 304
7	Diaphragm	EPDM+Nylon
8	Plate	Carbon Steel
9	Inside Hexagon Bolt	Stainless Steel 304
10	Nut	Stainless Steel 304
11	Spring	Stainless Steel 304
12	Cover	Brass
13	Spring Press Plate	Carbon Steel
14	Nut	Stainless Steel 304
15	Hexagon Head Bolt	Stainless Steel 304

Operation Cavitation Chart



Flow curve of the main valve at full open status

