

Stainless Steel Water Hammer Arrestor

Features

- ART 1325 BSP. ART 1325 NPT
- SS Pre-charged Stainless Steel WHA, with SS Bellows.
- Prolonged service life of piping, valves, fittings and other devices
- Reduction in noise in water systems
- Tested and certified to PDI WH-201



Pipe Sizing

Suffix	Description
AA	Conn Size 1/2" (15)
A	Conn Size 3/4" (19)
B	Conn Size 1" (25)
C	Conn Size 1" (25)
D	Conn Size 1" (25)
E	Conn Size 1" (25)
F	Conn Size 1" (25)

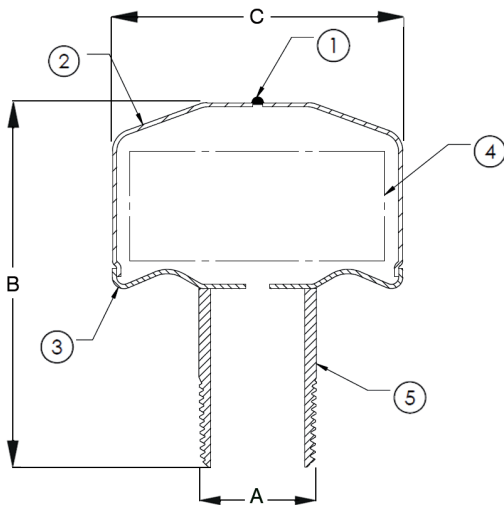
Technical Data

	AA	A	B	C	D	E	F
Fixture Unit	1-3	1-11	12-32	33-60	61-113	114-154	155-330
A	1/2" (15)	3/4" (19)	1" (25)	1" (25)	1" (25)	1" (25)	1" (25)
B	3-1/4" (83)	3-1/4" (83)	4-1/16" (103)	4-3/8" (114)	5-1/4" (133)	7-1/32" (179)	7-1/32" (179)
C	3-1/4" (83)	3-1/4" (83)	3-1/4" (83)	3-1/4" (83)	3-1/4" (83)	3-1/4" (83)	3-1/4" (83)

DN	1/2"	1/2"	3/4"	3/4"	1"	1"
Length of pipe (Ft.)	25	100	50	200	100	50
Flow pressure P.S.I.C	30	60	60	30	60	30
Velocity in feet per sec	10	10	5	10	5	10

Required air chamber

Volume in cubic inches	8	60	13	108	19	40
Physical size in inches	3/4" x 15"	1" x 69.5"	1" x 15"	1.1/4" x 72.5"	1.1/4" x 12.7"	1.1/4" x 27"



Technical Data

Working Pressure	150psi
Static Pressure	250psi
Max. Pressure	400psi
Working Temperature	-73°C to +149°C

No.	Part Name	Materials
1	SS Ball, Ø.125	Stainless Steel 304
2	Body	Stainless Steel 304
3	Bottom Cap	Stainless Steel 304
4	Bellows	Stainless Steel 304
5	Pipe Fitting	Stainless Steel 304

Dimensions in mm

This data sheet is designed as a guide and should not be regarded as wholly accurate in every detail. We reserve the right to amend the specification of any product without notice.