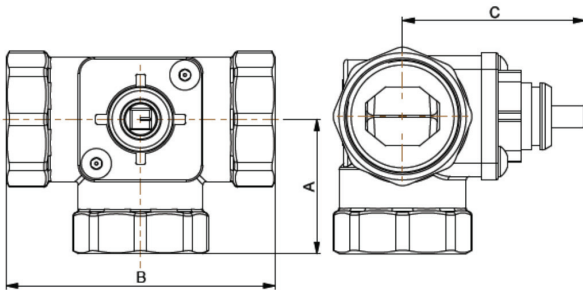
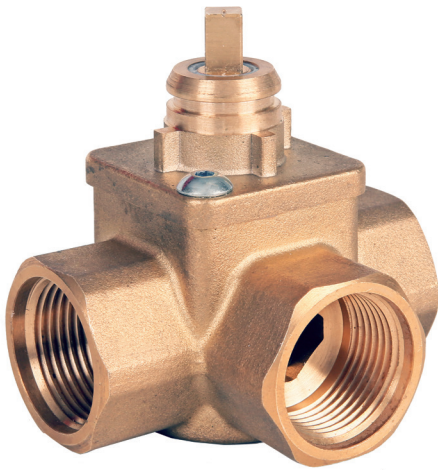


3 Port Rotary Control Brass Valve

Features

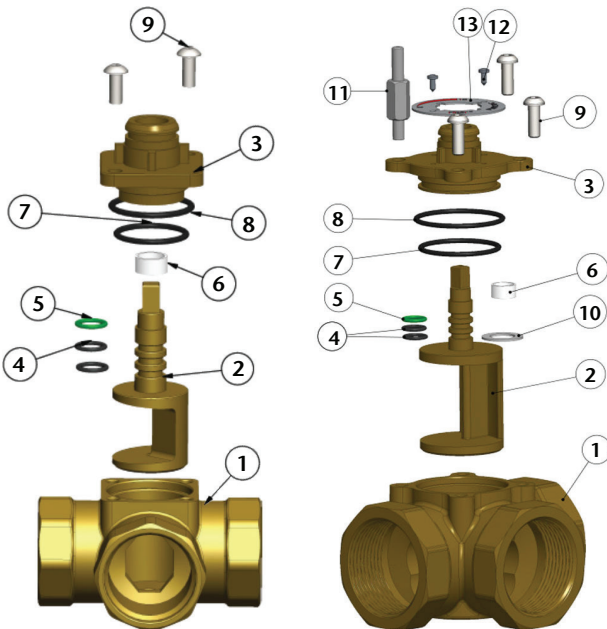
- BSP Parallel (ISO 7/1)
- 3-way valve suitable for mixing or diverting
- Designed to suit CLIP System actuators CRV(E)
- Max working pressure 10 bar
- Suitable for Heating or Cooling applications
- Spindle groove identifies rotor position
- Max spindle operating torque <2Nm



DN	15	20	25	32	40	50
Type	1/2" CRM15 FFF	3/4" CRM15 FFF	1" CRM15 FFF	1 1/4" CRM32 FFF	1 1/2" CRM40 FFF	2" CRM50 FFF
A	36	36	41	47	53	60
B	72	72	82	94	106	120
C	45	45	45	48	65	66
Connection	Rp 1/2"	Rp 3/4"	Rp 1"	Rp 1 1/4"	Rp 1 1/2"	Rp 2"
Kvs	3	7	11	15	25	40
Kgs	0.49	0.55	0.59	0.92	1.62	2.20

DN15-DN25

DN32-DN50



Technical Data

Max Pressure	10 Bar
Working Temperature	-10°C to +110°C
Differential Pressure Range	Mixing 100 kPa (1 Bar) Diverting 200 kPa (2 Bar)

N.	Part Name	Qty	Materials
1	Body	1	Brass CW617N
2	Rotor	1	Brass CW617N
3	Cover	1	Brass CW617N
4	'O' Ring 8.73x1.78	2	EPDM
5	'O' Ring 8.73x1.78	1	FKM
6	Washer	1	PTFE
7	'O' Ring 23.3x2.4	1	EPDM
8	'O' Ring 27x2.5	1	EPDM
9 (DN15-25)	Screw M5x10	2	Steel / Zinc Plated
9 (DN32-50)	Screw M6x16	3	Steel / Zinc Plated
10	Washer	1	PTFE
11	Spacer	1	Steel / Zinc Plated
12	Screw 2.9x6.5	2	DIN7981 A2k
13	Index Plate	1	Al

Dimensions in mm

This data sheet is designed as a guide and should not be regarded as wholly accurate in every detail. We reserve the right to amend the specification of any product without notice.