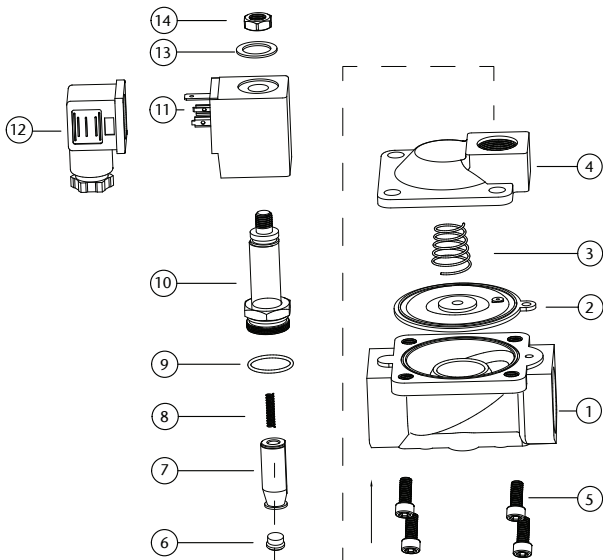


## Parts Diagram



| N. | Component         | Material                    |
|----|-------------------|-----------------------------|
| 1  | Valve Body        | Brass/Stainless Steel 316   |
| 2  | Diaphragm         | NBR/EPDM/Viton              |
| 3  | Diaphragm Spring  | Stainless Steel 304         |
| 4  | Valve Cover       | Brass/Stainless Steel 316   |
| 5  | Bolt              | Stainless Steel 302         |
| 6  | Pilot Seal        | NBR/EPDM/Viton              |
| 7  | Pilot             | Stainless Steel 1J117       |
| 8  | Pilot Spring      | Stainless Steel 304         |
| 9  | O Ring            | NBR/EPDM/Viton              |
| 10 | Plunger Tube Unit | Stainless Steel 304 + 1J117 |
| 11 | Coil              | Enamelled Wire              |
| 12 | Plug              | Nylon                       |
| 13 | Washer            | Stainless Steel 302         |
| 14 | Lock Nut          | Stainless Steel 302         |

Available in 230VAC, 110VAC  
12VDC, 24VDC, 24VAC

Thread standard: ISO 228/1

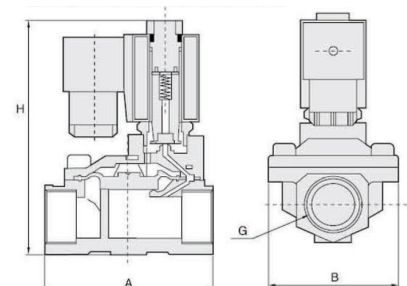
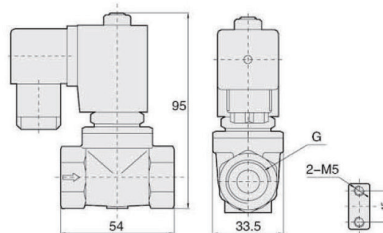
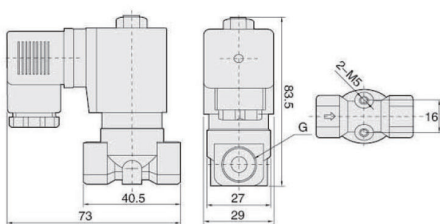
Coil Rating - IP 65  
Coil Duty Cycle - 100%

## Main Dimensions

**Orifice: 3mm & 4mm**  
**Port: 1/8", 1/4" & 3/8"**

**Orifice: 10.5mm**  
**Port: 1/4", 3/8" & 1/2"**

**Large Orifice**  
**See Table opposite**



# 2/2 Solenoid Valve Normally Closed

## Valve Specification

| Port Size<br>(G)            | Orifice | CV Value | Pressure Difference (Bar) |                       |                          |                     | Max. Temp.<br>(°C) | VA AC<br>230V | W DC<br>24V | Diaphragm | Main Dimension |   |
|-----------------------------|---------|----------|---------------------------|-----------------------|--------------------------|---------------------|--------------------|---------------|-------------|-----------|----------------|---|
|                             |         |          | Min.                      | Max. Working Pressure |                          |                     |                    |               |             |           |                |   |
|                             |         |          |                           | Air / Gas             | Water /<br>Hot<br>Liquid | Light Oil<br>≤20CST |                    |               |             |           | AxBxH          |   |
| 1/8"                        | 3       | 0.23     | 0                         | 13                    | 13                       | 10                  | 80                 | 22            | 13          | NBR       | -              |   |
|                             | 3       | 0.23     | 0                         | 13                    | 13                       | -                   | 120                | 22            | 13          | EPDM      | -              |   |
|                             | 3       | 0.23     | 0                         | 13                    | 13                       | 10                  | 120                | 22            | 13          | VITON     | -              |   |
| 1/4"                        | 3       | 0.23     | 0                         | 13                    | 13                       | 10                  | 80                 | 22            | 13          | NBR       | -              |   |
|                             | 3       | 0.23     | 0                         | 13                    | 13                       | -                   | 120                | 22            | 13          | EPDM      | -              |   |
|                             | 3       | 0.23     | 0                         | 13                    | 13                       | 10                  | 120                | 22            | 13          | VITON     | -              |   |
| 3/8"                        | 10.5    | 1.47     | 0                         | 16                    | 16                       | 13                  | 80                 | 22            | 13          | NBR       | -              |   |
|                             | 10.5    | 1.47     | 0                         | 16                    | 16                       | -                   | 120                | 22            | 13          | EPDM      | -              |   |
|                             | 10.5    | 1.47     | 0                         | 16                    | 16                       | 13                  | 120                | 22            | 13          | VITON     | -              |   |
|                             | 3       | 0.3      | 0                         | 13                    | 13                       | 10                  | 80                 | 22            | 13          | NBR       | -              |   |
|                             | 3       | 0.3      | 0                         | 13                    | 13                       | 10                  | 120                | 22            | 13          | EPDM      | -              |   |
|                             | 3       | 0.3      | 0                         | 13                    | 13                       | 10                  | 120                | 22            | 13          | VITON     | -              |   |
| 3/8"                        | 4       | 0.6      | 0                         | 8                     | 8                        | 6                   | 80                 | 22            | 13          | NBR       | -              |   |
|                             | 4       | 0.6      | 0                         | 8                     | 8                        | 6                   | 120                | 22            | 13          | EPDM      | -              |   |
|                             | 4       | 0.6      | 0                         | 8                     | 8                        | 6                   | 120                | 22            | 13          | VITON     | -              |   |
|                             | 10.5    | 1.68     | 0                         | 16                    | 16                       | 13                  | 80                 | 22            | 13          | NBR       | -              |   |
|                             | 10.5    | 1.68     | 0                         | 16                    | 16                       | -                   | 120                | 22            | 13          | EPDM      | -              |   |
|                             | 10.5    | 1.68     | 0                         | 16                    | 16                       | 13                  | 120                | 22            | 13          | VITON     | -              |   |
|                             | 13      | 4.5      | 0.5                       | 16                    | 16                       | 13                  | 80                 | 22            | 13          | NBR       | 66x48x112      |   |
|                             | 13      | 4.5      | 0.5                       | 16                    | 16                       | -                   | 120                | 22            | 13          | EPDM      | 66x48x112      |   |
|                             | 13      | 4.5      | 0.5                       | 16                    | 16                       | 13                  | 120                | 22            | 13          | VITON     | 66x48x112      |   |
|                             | 1/2"    | 10.5     | 1.75                      | 0                     | 16                       | 16                  | 13                 | 80            | 22          | 13        | NBR            | - |
|                             |         | 10.5     | 1.75                      | 0                     | 16                       | 16                  | -                  | 120           | 22          | 13        | EPDM           | - |
|                             |         | 10.5     | 1.75                      | 0                     | 16                       | 16                  | 13                 | 120           | 22          | 13        | VITON          | - |
| 13                          |         | 4.5      | 0.5                       | 16                    | 16                       | 13                  | 80                 | 22            | 13          | NBR       | 66x48x112      |   |
| 13                          |         | 4.5      | 0.5                       | 16                    | 16                       | -                   | 120                | 22            | 13          | EPDM      | 66x48x112      |   |
| 13                          |         | 4.5      | 0.5                       | 16                    | 16                       | 13                  | 120                | 22            | 13          | VITON     | 66x48x112      |   |
| 3/4"                        | 20      | 7.6      | 0.5                       | 16                    | 16                       | 13                  | 80                 | 22            | 13          | NBR       | 75x58x118      |   |
|                             | 20      | 7.6      | 0.5                       | 16                    | 16                       | -                   | 120                | 22            | 13          | EPDM      | 75x58x118      |   |
|                             | 20      | 7.6      | 0.5                       | 16                    | 16                       | 13                  | 120                | 22            | 13          | VITON     | 75x58x118      |   |
| 1"                          | 25      | 12       | 0.5                       | 16                    | 16                       | 13                  | 80                 | 22            | 13          | NBR       | 96x70x131      |   |
|                             | 25      | 12       | 0.5                       | 16                    | 16                       | -                   | 120                | 22            | 13          | EPDM      | 96x70x131      |   |
|                             | 25      | 12       | 0.5                       | 16                    | 16                       | 13                  | 120                | 22            | 13          | VITON     | 96x70x131      |   |
| 1.1/4"                      | 35      | 22       | 0.5                       | 16                    | 16                       | 13                  | 80                 | 22            | 13          | NBR       | 131x96x146     |   |
|                             | 35      | 22       | 0.5                       | 16                    | 16                       | -                   | 120                | 22            | 13          | EPDM      | 131x96x146     |   |
|                             | 35      | 22       | 0.5                       | 16                    | 16                       | 13                  | 120                | 22            | 13          | VITON     | 131x96x146     |   |
| 1.1/2"                      | 40      | 30       | 0.5                       | 16                    | 16                       | 13                  | 80                 | 22            | 13          | NBR       | 131x96x146     |   |
|                             | 40      | 30       | 0.5                       | 16                    | 16                       | -                   | 120                | 22            | 13          | EPDM      | 131x96x146     |   |
|                             | 40      | 30       | 0.5                       | 16                    | 16                       | 13                  | 120                | 22            | 13          | VITON     | 131x96x146     |   |
| 2"                          | 50      | 48       | 0.5                       | 16                    | 16                       | 13                  | 80                 | 22            | 13          | NBR       | 165x120x167    |   |
|                             | 50      | 48       | 0.5                       | 16                    | 16                       | -                   | 120                | 22            | 13          | EPDM      | 165x120x167    |   |
|                             | 50      | 48       | 0.5                       | 16                    | 16                       | 13                  | 120                | 22            | 13          | VITON     | 165x120x167    |   |
| 1" Flange<br>Connection     | 25      | 12       | 0.5                       | 16                    | 16                       | 13                  | 80                 | 22            | 13          | NBR       | 134x110x160    |   |
|                             | 25      | 12       | 0.5                       | 16                    | 16                       | -                   | 120                | 22            | 13          | EPDM      | 134x110x160    |   |
|                             | 25      | 12       | 0.5                       | 16                    | 16                       | 13                  | 120                | 22            | 13          | VITON     | 134x110x160    |   |
| 1.1/4" Flange<br>Connection | 35      | 22       | 0.5                       | 16                    | 16                       | 13                  | 80                 | 22            | 13          | NBR       | 160x135x175    |   |
|                             | 35      | 22       | 0.5                       | 16                    | 16                       | -                   | 120                | 22            | 13          | EPDM      | 160x135x175    |   |
|                             | 35      | 22       | 0.5                       | 16                    | 16                       | 13                  | 120                | 22            | 13          | VITON     | 160x135x175    |   |
| 1.1/2" Flange<br>Connection | 40      | 30       | 0.5                       | 16                    | 16                       | 13                  | 80                 | 22            | 13          | NBR       | 160x145x180    |   |
|                             | 40      | 30       | 0.5                       | 16                    | 16                       | -                   | 120                | 22            | 13          | EPDM      | 160x145x180    |   |
|                             | 40      | 30       | 0.5                       | 16                    | 16                       | 13                  | 120                | 22            | 13          | VITON     | 160x145x180    |   |
| 2" Flange<br>Connection     | 50      | 48       | 0.5                       | 12                    | 12                       | 13                  | 80                 | 22            | 13          | NBR       | 200x160x207    |   |
|                             | 50      | 48       | 0.5                       | 12                    | 12                       | -                   | 120                | 22            | 13          | EPDM      | 200x160x207    |   |
|                             | 50      | 48       | 0.5                       | 12                    | 12                       | 13                  | 120                | 22            | 13          | VITON     | 200x160x207    |   |
| 2.1/2" Flange<br>Connection | 65      | 52       | 0.5                       | 12                    | 12                       | 8                   | 80                 | 33            | 20          | NBR       | 250x185x250    |   |
|                             | 65      | 52       | 0.5                       | 12                    | 12                       | -                   | 120                | 33            | 20          | EPDM      | 250x185x250    |   |
|                             | 65      | 52       | 0.5                       | 12                    | 12                       | 8                   | 120                | 33            | 20          | VITON     | 250x185x250    |   |
| 3" Flange<br>Connection     | 80      | 80       | 0.5                       | 12                    | 12                       | 8                   | 80                 | 33            | 20          | NBR       | 270x202x262    |   |
|                             | 80      | 80       | 0.5                       | 12                    | 12                       | -                   | 120                | 33            | 20          | EPDM      | 270x202x262    |   |
|                             | 80      | 80       | 0.5                       | 12                    | 12                       | 8                   | 120                | 33            | 20          | VITON     | 270x202x262    |   |
| 4" Flange<br>Connection     | 100     | 128      | 0.5                       | 12                    | 12                       | 8                   | 80                 | 33            | 20          | NBR       | 342x222x287    |   |
|                             | 100     | 128      | 0.5                       | 12                    | 12                       | -                   | 120                | 33            | 20          | EPDM      | 342x222x287    |   |
|                             | 100     | 128      | 0.5                       | 12                    | 12                       | 8                   | 120                | 33            | 20          | VITON     | 342x222x287    |   |

Please refer to our price list for stocked items

Dimensions in mm

This data sheet is designed as a guide and should not be regarded as wholly accurate in every detail. We reserve the right to amend the specification of any product without notice.