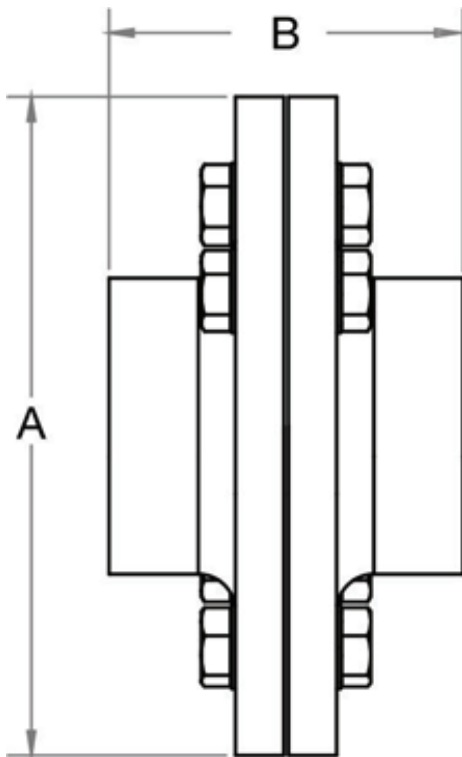


## Dielectric Flange

### Features

- Steel Side Female Threading x Brass Side Female Threading
- Steel Side Threading BSPT / NPT
- Brass Side Threading BSPT / NPT



Model	Steel Side Connector	Copper Side Connection	A in	A mm	B in	B mm	Kgs		
DEF-FF-1	2 1/2"	FPT	1 1/4"	FPT	7 1/4	184	4 1/4	104	6.8
DEF-FF-2	2 1/2"	FPT	1 1/2"	FPT	7 1/4	184	4 1/4	104	6.9
DEF-FF-3	2 1/2"	FPT	2"	FPT	7 1/4	184	4 1/4	106	7.1
DEF-FF-4	2 1/2"	FPT	2 1/2"	FPT	7 1/4	184	4 1/4	108	7.3
DEF-FF-5	3"	FPT	1 1/2"	FPT	7 3/4	197	4 1/2	110	8.2
DEF-FF-6	3"	FPT	2"	FPT	7 3/4	197	4 1/2	112	8.4
DEF-FF-7	3"	FPT	2 1/2"	FPT	7 3/4	197	4 1/2	114	8.6
DEF-FF-8	3"	FPT	3"	FPT	7 3/4	197	4 1/2	114	8.8
DEF-FF-9	4"	FPT	2 1/2"	FPT	8 3/4	222	4 3/4	121	15.3
DEF-FF-10	4"	FPT	3"	FPT	8 3/4	222	4 3/4	121	15.6
DEF-FF-11	4"	FPT	4"	FPT	8 3/4	222	4 3/4	121	15.9
DEF-FF-12	5"	FPT	3"	FPT	9 3/4	248	5 1/4	133	19.1
DEF-FF-13	5"	FPT	4"	FPT	9 3/4	248	5 1/4	133	19.4
DEF-FF-14	5"	FPT	5"	FPT	9 3/4	248	5 1/4	133	19.7
DEF-FF-15	6"	FPT	4"	FPT	11 1/4	285	6	153	23.0
DEF-FF-16	6"	FPT	5"	FPT	11 1/4	285	6	153	23.4
DEF-FF-17	6"	FPT	6"	FPT	11 1/4	285	6	153	23.8
DEF-FF-18	8"	FPT	5"	FPT	13 3/8	340	7 1/4	185	32.5
DEF-FF-19	8"	FPT	6"	FPT	13 3/8	340	7 1/4	185	33.0
DEF-FF-20	8"	FPT	8"	FPT	13 3/8	340	7 1/4	185	33.5

### Technical Data

Max Pressure	250PSI (17.2 Bar)
Max Working Temperature	120°C (248°F)

Dimensions in mm

This data sheet is designed as a guide and should not be regarded as wholly accurate in every detail. We reserve the right to amend the specification of any product without notice.

Part Name	Materials
Steel Side	Galvanised Steel with Epoxy Coating
Bolts	Galvanised Steel
Washer	Galvanised Steel
Nuts	Galvanised Steel
Bolt Insulators	ABS
Gasket	Nylon reinforced EPDM
Tail Piece	Lead Free Brass (LF)
Tail Piece insulator	ABS