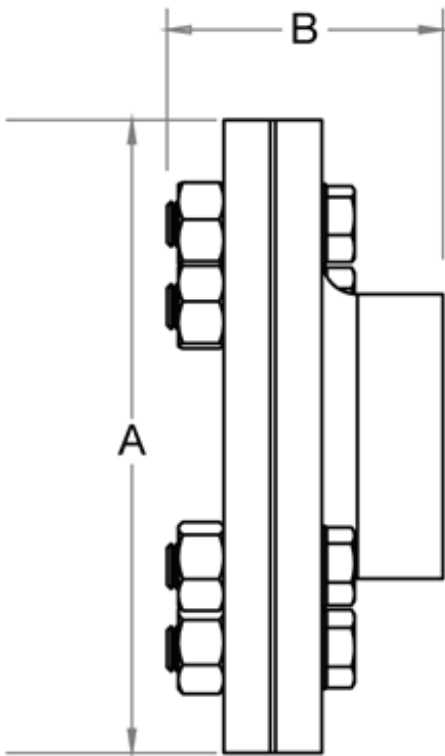


Dielectric Flange

Features

- Steel Side Weld End x Bronze Side Solder End
- Flanged to PN16 or ANSI 150
- Bronze Side Solder End
- Steel Side Welded End



Model	Steel Side Connecton	Copper Side Connection	A		B		Kgs
			in	mm	in	mm	
DEF-WB-1	2 1/2" Weld	67mm (2 5/8") Solder	7 1/4	184	3 1/2	89	5.4
DEF-WB-2	3" Weld	80mm (3 1/8") Solder	7 3/4	197	3 3/4	95	6.4
DEF-WB-3	4" Weld	105mm (4 1/8") Solder	8 3/4	222	4 3/8	111	13.6
DEF-WB-4	5" Weld	130mm (5 1/8") Solder	9 3/4	248	5 1/4	133	16.8
DEF-WB-5	6" Weld	155mm (6 1/8") Solder	11 1/4	285	6	153	19.2
DEF-WB-6	8" Weld	206mm (8 1/8") Solder	13 3/8	340	7 3/4	196	27.3

Part Name	Materials
Steel Flange	Galvanised Steel
Bolts	Galvanised Steel
Washer	Galvanised Steel
Nuts	Galvanised Steel
Bolt Insulators	ABS
Gasket	Nylon reinforced EPDM
Tail Piece	Bronze
Tail Piece insulator	ABS

Technical Data

Max Pressure	250PSI (17.2 Bar)
Max Working Temperature	120°C (248°F)

Dimensions in mm

This data sheet is designed as a guide and should not be regarded as wholly accurate in every detail. We reserve the right to amend the specification of any product without notice.