

ART 96

Extended Tee Handle

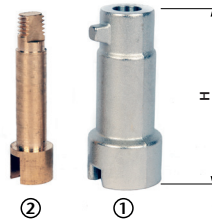
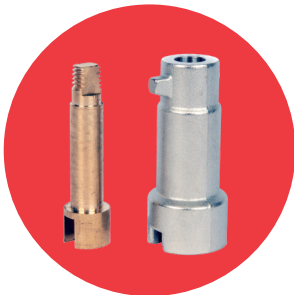


DN	1/2" - 15mm	3/4" - 22mm	1" - 28mm
ART 40	1B	1B	2B
ART 89	1B	1B	2B
ART 50	1B	1B	2B
ART 59	1B	1B	2B

DN	1/2" - 15mm	3/4" - 22mm	1" - 28mm
L	84	84	102
H	54	54	64

ART 97C

Thermal Extension



DN	1/2"	3/4"	1"	1 1/4"	1 1/2"	2"
ART 40	1B	1B	2B	3B	3B	4B
ART 89	1B	1B	2B	3B	3B	4B
ART 50	1B	1B	2B	3B	3B	4B
ART 59	1B	1B	2B	3B	3B	4B

	1B	2B	3B	4B
H	55	65	75	85

N.	Part Name	Materials
1	Extension	Brass / Nickel Plated
2	Stem	Brass