

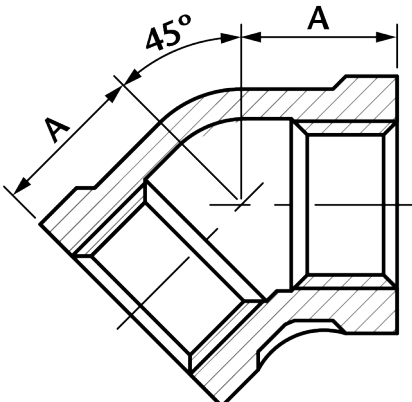
# 45E

## 45° Elbow

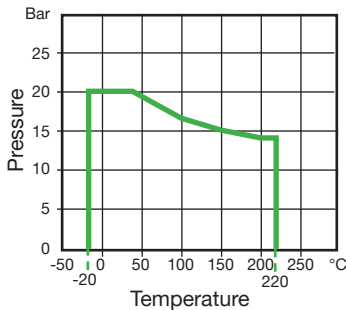


### Features

- Made from CF8M (316) Stainless Steel material and conform to ISO 4144 standard.
- Threads are to ISO 7-1 (DIN2999) BSPP Female, BSPT Male.
- Material certificates available on request.
- Tested & inspected prior to despatch.
- 12 month warranty from date of installation.
- Manufactured in accordance with ISO9001:2015 quality system.



DN	A	Kgs
1/8"	17.0	0.020
1/4"	17.0	0.025
3/8"	20.0	0.038
1/2"	22.0	0.068
3/4"	25.0	0.096
1"	30.0	0.164
1 1/4"	33.5	0.236
1 1/2"	37.5	0.312
2"	43.5	0.468
2 1/2"	49.5	0.775
3"	54.0	1.140
4"	64.0	1.867



Temperature (°C)	Non-shock maximum working pressure (bar)
-20 to 40	20
100	16.5
150	15
200	14
220	13.5

- NOTE 1 Pressure for intermediate temperatures may be determined by the interpolation method.
- NOTE 2 Temperatures indicated are those of internal fluid.
- NOTE 3 Piping loads, stresses and moments are not taken into account.