

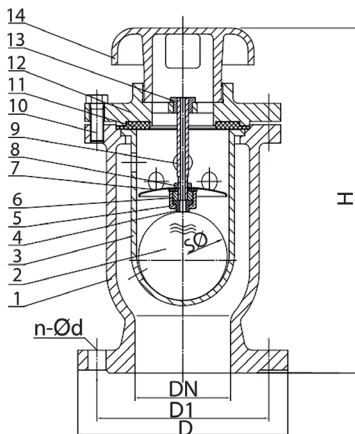
ART 1450 PN16

Ductile Iron Flanged Air Release Valve



Features

- Flange mounting PN16 only
- Flange conforms to BS EN1092 PN16
- WRAS approved coating
- Internally and externally fusion bonded epoxy coated



Technical data

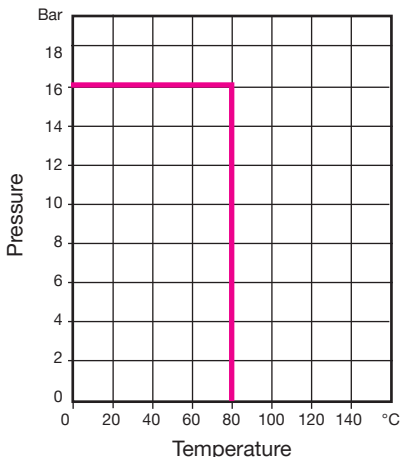
Max. pressure: 16 Bar

Working temp: 0°C to +80°C

DN	50	65	80	100	150	200	250	300
D	165	185	200	220	285	340	405	460
D1	125	145	160	180	240	295	355	410
n-d	4-Ø19	4-Ø19	8-Ø19	8-Ø19	8-Ø23	12-Ø23	12-Ø28	12-Ø28
H	330	365	365	387	465	495	525	587
SØ	94	94	94	94	135	160	200	250
Kgs	16.0	20.0	22.5	50.0	55.0	68.0	75.0	96.0

N. Part Name Materials

1	Body	Ductile Iron BS EN1563
2	Ball	Stainless Steel EN10213 GX5CrNi19-10
3	Sleeve	Ductile Iron BS EN1563
4	Seat	NBR EN681
5	Bearing	Brass EN12166
6	Plug	Brass EN12166
7	Guide	Stainless Steel EN10213 GX5CrNi19-10
8	Nut	Brass EN12166
9	Stem	Brass EN12166
10	Bolt	Stainless Steel BS970 304S15
11	Washer	NBR EN681
12	Bonnet	Ductile Iron BS EN1563
13	Bush	Brass EN12166
14	Cover	Ductile Iron BS EN1563



V1. Dimensions in mm

This data sheet is designed as a guide and should not be regarded as wholly accurate in every detail. We reserve the right to amend the specification of any product without notice.