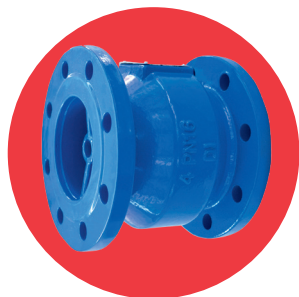


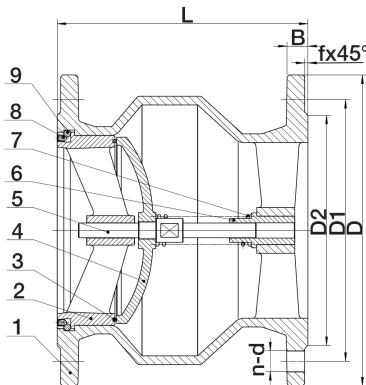
# ART 162

## PN16 Ductile Iron Silent Check Valve



### Features

- Flange conforms to BS EN1092 PN16
- Valve design conforms to BS EN12334
- Valve inspection and testing in accordance with BS EN12266



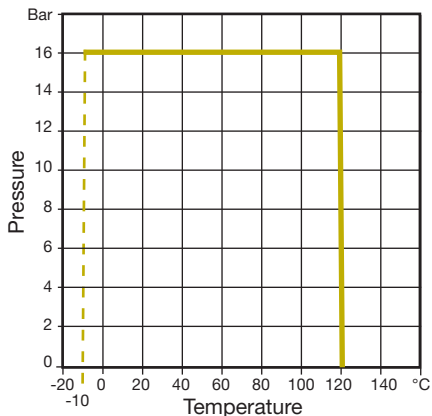
### Technical data

Max pressure: 16 Bar  
Working temp: -10°C to +120°C

| DN  | 2"   | 2 1/2" | 3"   | 4"   | 5"   | 6"   | 8"    | 10"   | 12"   | 14"   | 16"   |
|-----|------|--------|------|------|------|------|-------|-------|-------|-------|-------|
| L   | 133  | 140    | 152  | 185  | 216  | 230  | 259   | 362   | 393   | 400   | 448   |
| D   | 165  | 185    | 200  | 220  | 250  | 285  | 340   | 405   | 460   | 520   | 580   |
| D1  | 125  | 145    | 160  | 180  | 210  | 240  | 295   | 355   | 410   | 470   | 525   |
| D2  | 99   | 118    | 132  | 156  | 184  | 211  | 266   | 319   | 370   | 429   | 480   |
| B   | 19.0 | 19.0   | 19.0 | 19.0 | 19.0 | 19.0 | 20.0  | 22.0  | 24.5  | 26.5  | 28.0  |
| f   | 3    | 3      | 3    | 3    | 3    | 3    | 3     | 3     | 4     | 4     | 4     |
| n-d | 4-19 | 4-19   | 8-19 | 8-19 | 8-19 | 8-23 | 12-12 | 12-28 | 12-28 | 16-28 | 16-31 |
| Kgs | 7.6  | 9.4    | 10.2 | 13.6 | 18.7 | 25.1 | 39.6  | 70.1  | 95.2  | 143.4 | 196.0 |

### N. Part Name Materials

|   |           |  |
|---|-----------|--|
| 1 | Body      | Ductile Iron - BS EN1563 EN-GJS-450-10 |
| 2 | Seat Body | Ductile Iron - BS EN1563 EN-GJS-450-10 |
| 3 | Seat      | EPDM                                   |
| 4 | Disc      | Ductile Iron - BS EN1563 EN-GJS-450-10 |
| 5 | Stem      | Stainless Steel BS970 304S15           |
| 6 | Bushing   | Brass BS2874 CZ122                     |
| 7 | Spring    | Stainless Steel BS970 304S15           |
| 8 | Screw     | Stainless Steel BS970 304S15           |
| 9 | Ball      | Stainless Steel BS970 304S15           |



V1. Dimensions in mm

This data sheet is designed as a guide and should not be regarded as wholly accurate in every detail. We reserve the right to amend the specification of any product without notice.