

ART 195 ANSI

ANSI 125 Cast Iron Suction Diffuser

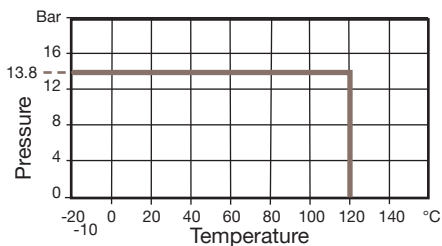


Features

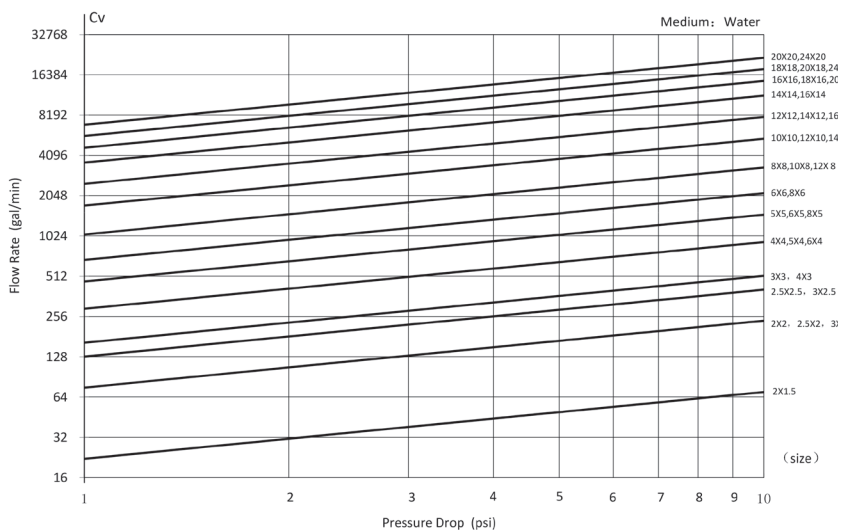
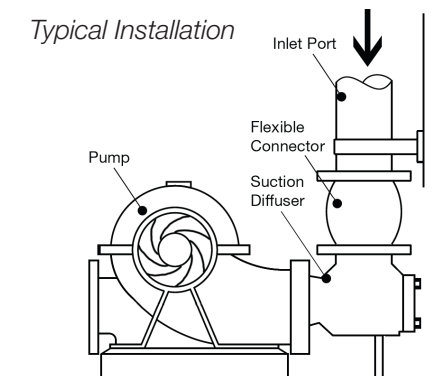
- Designed for suction side of pump installations
- Prevents debris and foreign materials entering the pump
- Low pressure drop
- Available with reduced and equal inlet / outlets
- Flanged ANSI 125 (B16.1)

Technical data

Max Pressure: 13.8 Bar
 Working Temperature: -20°C to +120°C



Typical Installation



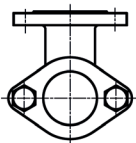
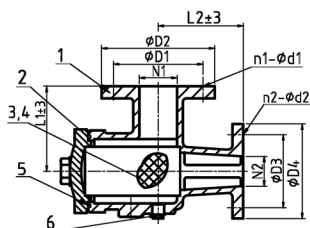
ART 195 ANSI

ANSI 125 Cast Iron

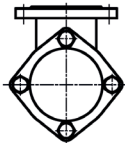
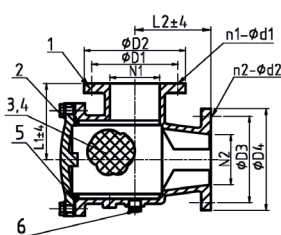
Suction Diffuser



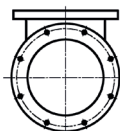
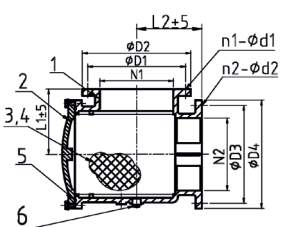
2" x 1.5" - 4" x 4"



5" x 4", 5" x 5", 6" x 4" & 8" x 5"



6" x 5", 6" x 6" & 8" x 6"+



DN1xDN2	ØD1	ØD2	N1-ØD1	ØD3	ØD4	N2-ØD2	L1	L2	Kgs
2x1.5	120.5	152	4-19	98	127	4-16	114.4	114.4	12
2x2	120.5	152	4-19	120.5	152	4-19	114.4	114.4	14.5
2.5x2	140	178	4-19	120.5	152	4-19	126.5	126.5	18
2.5x2.5	140	178	4-19	140	178	4-19	126.5	126.5	20
3x2	152.5	191	4-19	120.5	152	4-19	139.7	114	17
3x2.5	152.5	191	4-19	140	178	4-19	140.1	140.1	25
3x3	152.5	191	4-19	152.5	191	4-19	140.1	140.1	26
4x3	190.5	229	8-19	152.5	191	4-19	165	165	36
4x4	190.5	229	8-19	190.5	229	8-19	165	165	40
5x4	216	254	8-22	191	229	8-19	191.5	191.5	51
5x5	216	254	8-22	216	254	8-22	191.5	191.5	53
6x4	241.5	279	8-22	190.5	229	8-19	203	165	58
6x5	241.5	279	8-22	216	254	8-22	203	203	65
6x6	241.5	279	8-22	241.5	279	8-22	203	203	68
8x5	298.5	343	8-22	216	254	8-22	192	229	60
8x6	298.5	343	8-22	241.5	279	8-22	228.6	203	88
8x8	298.5	343	8-22	298.5	343	8-22	229	229	120
10x8	362	406	12-25.4	298.5	343	8-22	279.4	229	130
10x10	362	406	12-25.4	362	406	12-25.4	279	279	145
12x8	432	483	12-25.4	298.5	343	8-22	280	280	175
12x10	432	483	12-25.4	362	406	12-25.4	304.8	279	220
12x12	432	483	12-25.4	432	483	12-25.4	304.8	304.8	250
14x10	476	533	12-29	362	406	12-25.4	318	328	270
14x12	476	533	12-29	432	483	12-25.4	318	328	280
14x14	476	533	12-29	476	533	12-29	318	328	292
16x12	539.5	597	16-29	432	483	12-25.4	334	364	315
16x14	539.5	597	16-29	476	533	12-29	334	364	335
16x16	539.5	597	16-29	539.5	597	16-29	334	364	360
18x14	578	635	16-32	476	533	12-29		389	375
18x16	578	635	16-32	539.5	597	16-29	370	389	397
18x18	578	635	16-32	578	635	16-32	370	389	410
20x16	635	699	20-32	539.5	597	16-29	406	428	497
20x18	635	699	20-32	578	635	16-32	406	428	512
20x20	635	699	20-32	635	699	20-32	406	428	530
24x18	749	813	20-35	578	635	16-32	470	480	745
24x20	749	813	20-35	635	699	20-32	470	480	760
24x24	749	813	20-35	749	813	20-35	470	480	775

N.	Part Name	Materials
1	Body	Cast Iron
2	Cover	Cast Iron
3	Screen	Stainless Steel 304
4	Woven Mesh	Stainless Steel 304
5	O-Ring	EDPM
6	Plug	Carbon Steel