

ART 195 PN16

PN16 Cast Iron Suction Diffuser

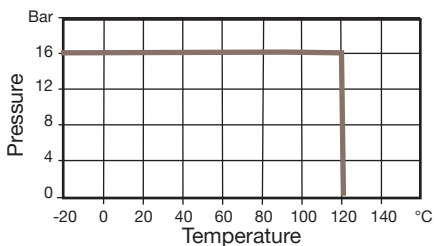


Features

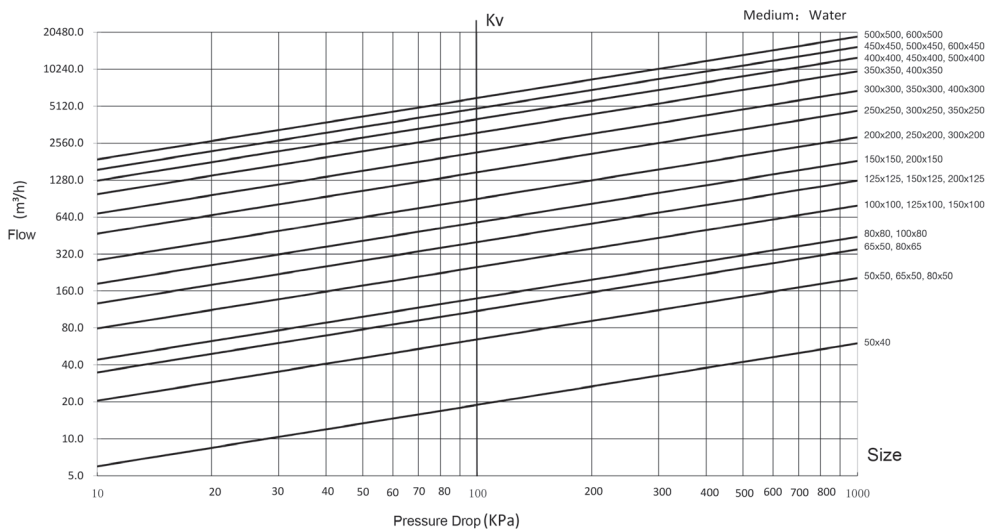
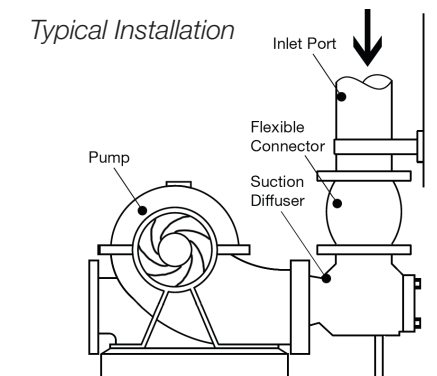
- Designed for suction side of pump installations
- Prevents debris and foreign materials entering the pump
- Low pressure drop
- Available with reduced and equal inlet / outlets
- Flange conforms to BS EN1092 PN16
- Available Flanged PN25

Technical data

Max Pressure: 16 Bar
 Working Temperature: -20°C to +120°C



Typical Installation



V1. Dimensions in mm

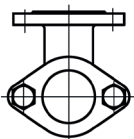
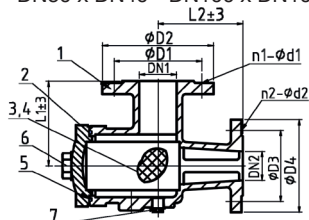
This data sheet is designed as a guide and should not be regarded as wholly accurate in every detail. We reserve the right to amend the specification of any product without notice.

ART 195 PN16

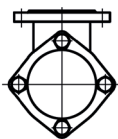
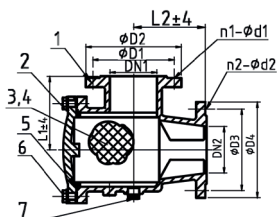
PN16 Cast Iron Suction Diffuser



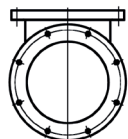
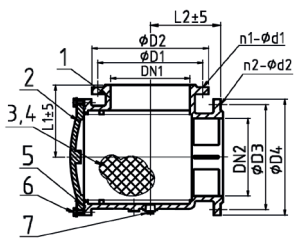
DN50 x DN40 - DN100 x DN100



DN125 x DN100, DN125 x DN125,
DN150 x DN100 & DN200 x DN125



DN150 x DN125, DN150 x DN150 &
DN200 x DN150+



| DN1xDN2 | ØD1 | ØD2 | N1-ØD1 | ØD3 | ØD4 | N2-ØD2 | L1 | L2 | Kgs |
|---------|-----|-----|--------|-------|-----|--------|-------|-------|------|
| 50x40 | 125 | 165 | 4-19 | 110 | 150 | 4-19 | 114.4 | 114.4 | 12 |
| 50x50 | 125 | 165 | 4-19 | 125 | 165 | 4-19 | 114.4 | 114.4 | 14.5 |
| 65x50 | 145 | 185 | 4-19 | 125 | 165 | 4-19 | 126.5 | 126.5 | 18 |
| 65x65 | 145 | 185 | 4-19 | 145 | 185 | 4-19 | 126.5 | 126.5 | 20 |
| 80x50 | 160 | 200 | 8-19 | 125 | 165 | 4-19 | 139.7 | 114 | 17 |
| 80x65 | 160 | 200 | 8-19 | 145 | 185 | 4-19 | 140.1 | 140.1 | 25 |
| 80x80 | 160 | 200 | 8-19 | 160 | 200 | 8-19 | 140.1 | 140.1 | 26 |
| 100x80 | 180 | 220 | 8-19 | 160 | 200 | 8-19 | 165 | 165 | 36 |
| 100x100 | 180 | 220 | 8-19 | 180 | 220 | 8-19 | 165 | 165 | 40 |
| 125x100 | 210 | 250 | 8-19 | 180 | 220 | 8-19 | 191.5 | 191.5 | 51 |
| 125x125 | 210 | 250 | 8-19 | 210 | 250 | 8-19 | 191.5 | 191.5 | 53 |
| 150x100 | 240 | 285 | 8-23 | 180 | 220 | 8-19 | 203 | 165 | 58 |
| 150x125 | 240 | 285 | 8-23 | 210 | 250 | 8-19 | 203 | 203 | 65 |
| 150x150 | 240 | 285 | 8-23 | 240 | 285 | 8-23 | 203 | 203 | 68 |
| 200x125 | 295 | 340 | 12-23 | 210 | 250 | 8-19 | 192 | 229 | 60 |
| 200x150 | 295 | 340 | 12-23 | 240 | 285 | 8-23 | 228.6 | 203 | 88 |
| 200x200 | 295 | 340 | 12-23 | 295 | 340 | 12-23 | 229 | 229 | 120 |
| 250x200 | 355 | 405 | 12-28 | 299.5 | 340 | 12-23 | 279.4 | 229 | 130 |
| 250x250 | 355 | 405 | 12-28 | 355 | 405 | 12-28 | 279 | 279 | 145 |
| 300x200 | 410 | 460 | 12-28 | 295 | 340 | 12-23 | 280 | 280 | 175 |
| 300x250 | 410 | 460 | 12-28 | 355 | 405 | 12-28 | 304.8 | 279 | 220 |
| 300x300 | 410 | 460 | 12-28 | 410 | 460 | 12-28 | 304.8 | 304.8 | 250 |
| 350x250 | 470 | 520 | 16-28 | 355 | 405 | 12-28 | 318 | 328 | 270 |
| 350x300 | 470 | 520 | 16-28 | 410 | 460 | 12-28 | 318 | 328 | 280 |
| 350x350 | 470 | 520 | 16-28 | 470 | 520 | 16-28 | 318 | 328 | 292 |
| 400x300 | 525 | 580 | 16-31 | 410 | 460 | 12-28 | 334 | 364 | 315 |
| 400x350 | 525 | 580 | 16-31 | 470 | 520 | 16-28 | 334 | 364 | 335 |
| 400x400 | 525 | 580 | 16-31 | 525 | 580 | 16-31 | 334 | 364 | 360 |
| 450x350 | 585 | 640 | 20-31 | 470 | 520 | 16-28 | 370 | 389 | 375 |
| 450x400 | 585 | 640 | 20-31 | 525 | 580 | 16-31 | 370 | 389 | 397 |
| 450x450 | 585 | 640 | 20-31 | 585 | 640 | 20-31 | 370 | 389 | 410 |
| 500x400 | 650 | 715 | 20-34 | 525 | 580 | 16-31 | 406 | 428 | 497 |
| 500x450 | 650 | 715 | 20-34 | 585 | 640 | 20-31 | 406 | 428 | 512 |
| 500x500 | 650 | 715 | 20-34 | 650 | 715 | 20-34 | 406 | 428 | 530 |
| 600x450 | 770 | 840 | 20-37 | 585 | 640 | 20-31 | 470 | 480 | 745 |
| 600x500 | 770 | 840 | 20-37 | 650 | 715 | 20-34 | 470 | 480 | 760 |
| 600x600 | 770 | 840 | 20-37 | 770 | 840 | 20-37 | 470 | 480 | 775 |

| N. | Part Name | Materials |
|----|------------|---------------------|
| 1 | Body | Cast Iron |
| 2 | Cover | Cast Iron |
| 3 | Screen | Stainless Steel 304 |
| 4 | Woven Mesh | Stainless Steel 304 |
| 5 | O-Ring | EDPM |
| 6 | Bolt | Carbon Steel |
| 7 | Plug | Carbon Steel |