

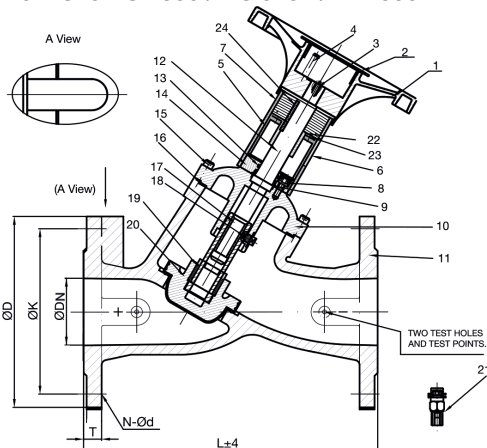
ART 250 ANSI

ANSI Ductile Iron Double Regulating Valve (DRV)



Features

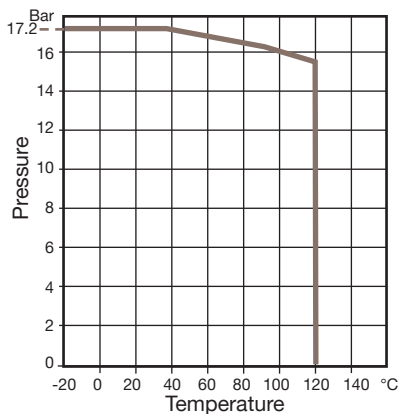
- Flange ANSI 150 (B16.42)
- Position indicator
- Supplied with 2 test points and extensions
- EPDM cone seating gives tight shut off
- Conforms to BS 7350 / BS 5152 / API 598



Technical data

Max pressure: 17.2 Bar

Working temp: -20°C to +120°C



DN	50	65	80	100	125	150	200	250	300
D	152	178	191	229	254	279	343	406	483
K	121	140	152	191	216	241	299	362	432
n-Ød	4-	4-	4-	8-	8-	8-	8-	12-	12-
Ø19	Ø19	Ø19	Ø19	Ø22.4	Ø22.4	Ø22.4	Ø22.4	Ø25.4	Ø25.4
T	16	18	19	24	24	25	29	30	32
L	230	290	310	350	400	480	600	730	850
Kvs	48.2	82.6	117.4	211.4	381.5	462.4	790.0	1135	2022
Kgs	12.5	16.0	21.0	30.0	42.0	56.0	126.0	195.0	289.0

N.	Part Name	Materials
1	Handwheel	Aluminium Alloy / Steel
2	Handwheel Cover	Plastic
3	Handwheel Lock Screw	Stainless Steel 304
4	Adjusting Screw	Stainless Steel 304
5	Indication Tube	Plastic
6	Transparent Scale	Plastic
7	Connection Tube	ABS Plastic
8, 15	Hexagon Socket Screw	Carbon Steel
9, 13	O-Ring	EPDM
10	Cover	Cast Iron
11	Body	Ductile Iron
12	Stem	Stainless Steel 410

N.	Part Name	Materials
14	Packing Gland	Stainless Steel 410
16	Graphite Gland	Graphite
17	Stem Nut	HPb59-1
18	Positional Screw	Stainless Steel 304
19	Nut Cover	HPb59-1
20	Disc - rubber wrapped	Cast Iron + EPDM
21	Test Points	
22	Drive Plate	Stainless Steel 410
23	Screw	Carbon Steel
24	Flat Key	Stainless Steel 410

V1. Dimensions in mm

This data sheet is designed as a guide and should not be regarded as wholly accurate in every detail. We reserve the right to amend the specification of any product without notice.