

# ART 33

## Thermostatic Mixing Valve (TMV)



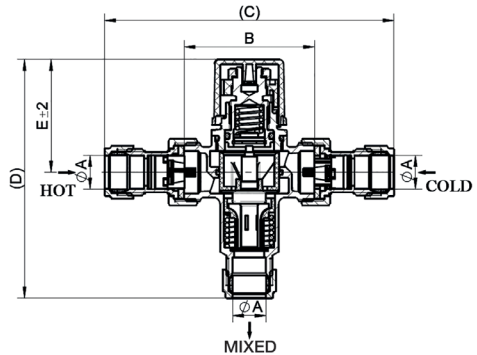
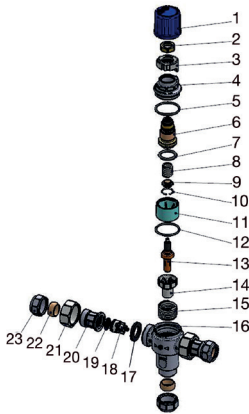
### Features

- Cold water supply temperature 5°C - 25°C
- Hot water supply temperature 55°C - 65°C
- Temperature adjustment range 30°C - 48°C
- Working temperature range 38°C - 44°C
- Factory set thermostatic controller 42°C 0/2°C
- Accuracy of outlet temperature ±2°C
- Min. temperature differential 12°C  
(between hot supply and outlet temp)
- Supply pressure imbalance dynamic 2:1
- Flow rate minimum 5 Litres/min



### Technical data

Max pressure (Static) 10 Bar  
Max pressure (Dynamic) 5 Bar



DN	15	22
A	Ø15.1	Ø22.1
B	59	61
C	131	155
D	108	110
E	50.9	50.9
Kgs	0.47	0.68

N.	Part Name	Materials
1	Cap	ABS
2	Locking Cap	Brass CW617N
3	Locating Ring	POM+25%GF
4	Bonnet*	DZR Brass CW602N chrome plated
5	O-ring*	EPDM WRAS Approved
6	Stem*	DZR Brass CW602N
7	O-ring*	EPDM WRAS Approved
8	Spring*	Stainless Steel
9	Block*	DZR Brass CW602N
10	Circlip*	Stainless Steel
11	Piston*	PSU
12	O-ring*	EPDM WRAS Approved

N.	Part Name	Materials
13	Thermostat*	Subassembly
14	Water Flow Directors*	PSU
15	Spring*	Stainless Steel
16	Valve Body*	DZR Brass CW602N chrome plated
17	Gasket*	EPDM WRAS Approved
18	Check Valve*	Element WRAS Approved
19	Strainer	Stainless Steel
20	Connect Pipe*	DZR Brass CW602N chrome plated
21	Union Nut	Brass CW617N chrome plated
22	Sleeve*	CW507L
23	Union Nut	DZR Brass CW602N chrome plated

\* Parts that have contact with water

V1. Dimensions in mm

This data sheet is designed as a guide and should not be regarded as wholly accurate in every detail. We reserve the right to amend the specification of any product without notice.