

# ART 622

## Brass Adjustable Pressure Relief Valve

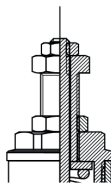


### Features

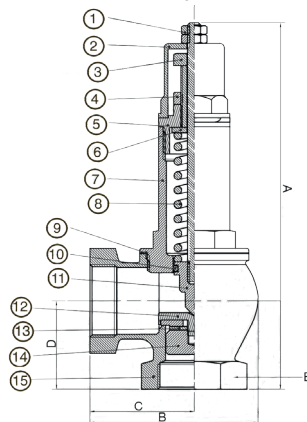
- Screwed BSP Parallel (ISO 228/1)
- Suitable for gases, liquids and steam
- Adjustable range: 0.5 to 16 bar
- PED 2014/68/EU
- Manual test function
- Suitable for use as a bypass valve
- This product should not be used as a safety valve

### Technical data

Max pressure: 16 Bar  
 Adjustable pressure range: 0.5 -16 Bar  
 Working temp: 0°C to 150°C



Alternative top on  
2 1/2" and 3" valves.



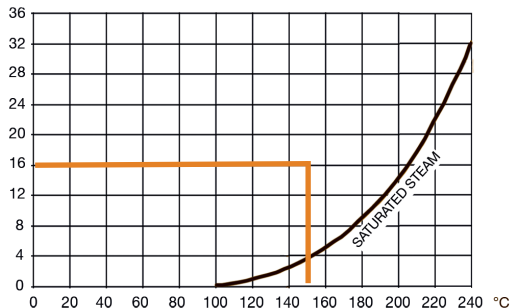
DN	1/2"	3/4"	1"	1 1/4"	1 1/2"	2"	2 1/2"	3"
A	136	158	169	207	230	259	305	315
B	56	64	76	90	100	124	135	145
C	35.5	39.5	47	56	62.5	75	79.5	84.5
D	30	32	40	44	47	60	69	78
E	28	35	41	49	56	71	88	100
Kgs	0.47	0.69	0.97	1.57	2.04	3.18	4.52	5.30

### N. Part Name

### Materials

1 Nut and Locknut	Brass CW617N
2 Housing Cap	Brass CW617N
3 Regulator	Brass CW617N
4 Locknut Regulator	Brass CW617N
5 Regulator Seat	Brass CW617N
6 Spring Pusher	Brass CW617N
7 Bonnet	1/2"-1.1/2" Brass EN12165-CW617N 2"-3" Brass EN1982-CC754S
8 Spring	Galvanised Steel EN10270-1 / AISI302
9 Gasket	Pressed Fibre
10 O-Ring	EPDM Rubber
11 Rod	Brass CW617N
12 Valve Seat	Brass CW617N
13 Valve Gasket	EPDM Rubber
14 Valve Nut	Brass CW617N
15 Body	Brass EN1982-CC754S

Bar



V1. Dimensions in mm

This data sheet is designed as a guide and should not be regarded as wholly accurate in every detail. We reserve the right to amend the specification of any product without notice.