

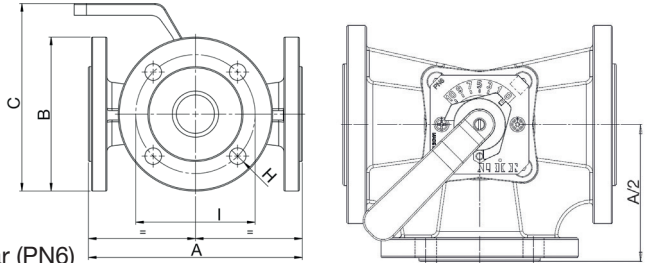
# CLRM

## 3 Port Flanged Rotary Mixing Valve



### Features

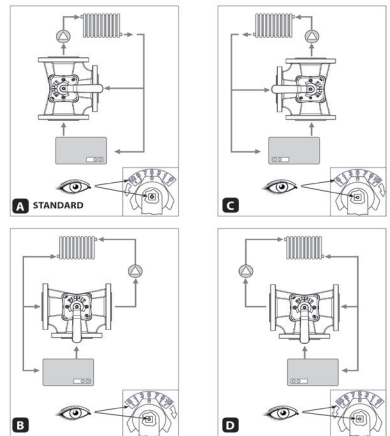
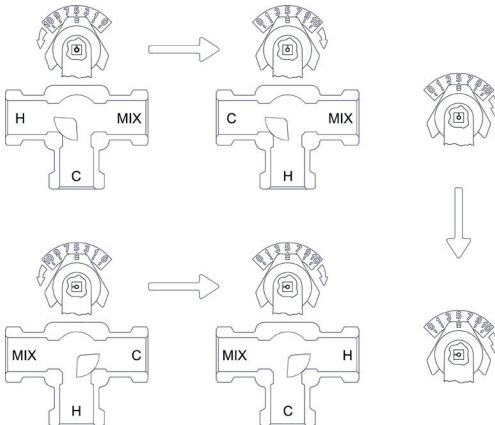
- Cast Iron body and plug (EN-GJL-250). Handle: ABS
- Hydraulic tightness: EPDM
- Manual or actuated operation
- Suitable fluids: Water, glycol water (max 30%)
- Connections: Flanged connections ISO 7005



### Technical data

Max Pressure: 6 Bar (PN6)  
 Working Temperature: -10°C to +110°C  
 Rotor's Rotation Angle: 90°  
 Leakage: DN40 - DN100 0.1% del Kvs  
 DN125 - DN150 0.5% del Kvs

DN	40	50	65	80	100	125	150
Kv	41	65	100	185	310	510	820
A	180	200	200	234	260	296	350
A/2	90	100	100	117	130	148	175
B	130	140	160	190	210	240	265
C	160	170	190	210	240	270	300
H	14	14	14	18	18	18	18
I	100	110	130	150	170	200	225
Hole N°	4	4	4	4	4	8	8
Kgs	7	9	11	15	22	34	50



V1. Dimensions in mm

This data sheet is designed as a guide and should not be regarded as wholly accurate in every detail. We reserve the right to amend the specification of any product without notice.