

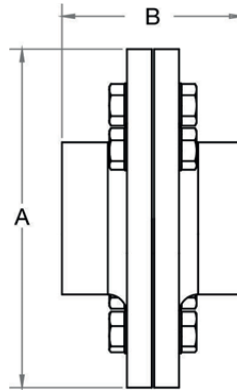
DEFFF

Dielectric Flange



Features

- Steel side female threading x brass side female threading
- Steel side threading BSPT / NPT
- Brass side threading BSPT / NPT



Technical data

Max. pressure: 17.2 Bar (250psi)

Max. temp: 120°C (248°F)

| Model | Steel Side Connection | | Copper Side Connection | | A | | B | | Kgs |
|-----------|-----------------------|-----|------------------------|-----|--------|-----|-------|-----|------|
| | | | | | in | mm | in | mm | |
| DEF-FF-1 | 2 1/2" | FPT | 1 1/4" | FPT | 7 1/4 | 184 | 4 1/4 | 104 | 6.8 |
| DEF-FF-2 | 2 1/2" | FPT | 1 1/2" | FPT | 7 1/4 | 184 | 4 1/4 | 104 | 6.9 |
| DEF-FF-3 | 2 1/2" | FPT | 2" | FPT | 7 1/4 | 184 | 4 1/4 | 106 | 7.1 |
| DEF-FF-4 | 2 1/2" | FPT | 2 1/2" | FPT | 7 1/4 | 184 | 4 1/4 | 108 | 7.3 |
| DEF-FF-5 | 3" | FPT | 1 1/2" | FPT | 7 3/4 | 197 | 4 1/2 | 110 | 8.2 |
| DEF-FF-6 | 3" | FPT | 2" | FPT | 7 3/4 | 197 | 4 1/2 | 112 | 8.4 |
| DEF-FF-7 | 3" | FPT | 2 1/2" | FPT | 7 3/4 | 197 | 4 1/2 | 114 | 8.6 |
| DEF-FF-8 | 3" | FPT | 3" | FPT | 7 3/4 | 197 | 4 1/2 | 114 | 8.8 |
| DEF-FF-9 | 4" | FPT | 2 1/2" | FPT | 8 3/4 | 222 | 4 3/4 | 121 | 15.3 |
| DEF-FF-10 | 4" | FPT | 3" | FPT | 8 3/4 | 222 | 4 3/4 | 121 | 15.6 |
| DEF-FF-11 | 4" | FPT | 4" | FPT | 8 3/4 | 222 | 4 3/4 | 121 | 15.9 |
| DEF-FF-12 | 5" | FPT | 3" | FPT | 9 3/4 | 248 | 5 1/4 | 133 | 19.1 |
| DEF-FF-13 | 5" | FPT | 4" | FPT | 9 3/4 | 248 | 5 1/4 | 133 | 19.4 |
| DEF-FF-14 | 5" | FPT | 5" | FPT | 9 3/4 | 248 | 5 1/4 | 133 | 19.7 |
| DEF-FF-15 | 6" | FPT | 4" | FPT | 11 1/4 | 285 | 6 | 153 | 23 |
| DEF-FF-16 | 6" | FPT | 5" | FPT | 11 1/4 | 285 | 6 | 153 | 23.4 |
| DEF-FF-17 | 6" | FPT | 6" | FPT | 11 1/4 | 285 | 6 | 153 | 23.8 |
| DEF-FF-18 | 8" | FPT | 5" | FPT | 13 3/8 | 340 | 7 1/4 | 185 | 32.5 |
| DEF-FF-19 | 8" | FPT | 6" | FPT | 13 3/8 | 340 | 7 1/4 | 185 | 33 |
| DEF-FF-20 | 8" | FPT | 8" | FPT | 13 3/8 | 340 | 7 1/4 | 185 | 33.5 |

| Part Name | Materials | Part Name | Materials |
|--------------|-------------------------------------|----------------------|-----------------------|
| Steel Flange | Galvanised Steel with Epoxy Coating | Bolt Insulators | ABS |
| Bolts | Galvanised Steel | Gasket | Nylon reinforced EPDM |
| Washer | Galvanised Steel | Tail Piece | Lead Free Brass (LF) |
| Nuts | Galvanised Steel | Tail Piece Insulator | ABS |

V1. Dimensions in mm

This data sheet is designed as a guide and should not be regarded as wholly accurate in every detail. We reserve the right to amend the specification of any product without notice.