

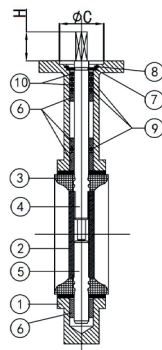
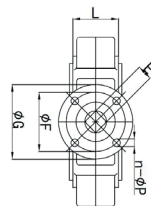
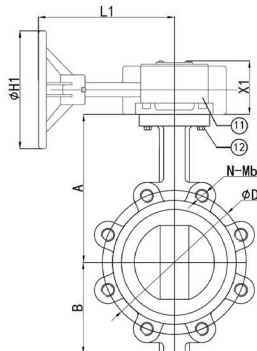
ART 145GB

Ductile Iron Butterfly Valve Lugged & Tapped



Features

- Flanged mounting PN16 only
- BS5155 (BS EN 593)
- ISO 5211 direct mount
- Epoxy coat finish
- Lockable handle



Technical data

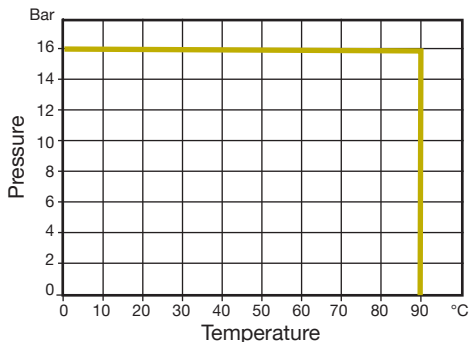
Max pressure: 16 Bar

Working temp: 0°C to +90°C

DN	2"	2 1/2"	3"	4"	5"	6"	8"	10"	12"
A	142	155	161	180	193	205	250	282	326
B	60	70	85	104	120	135	171	205	248
C	56	56	56	56	56	56	71	71	71
D	125	145	160	180	210	240	295	355	410
N-Mb	4-M16	4-M16	8-M16	8-M16	8-M16	8-M20	12-M20	12-M24	12-M24
E	11	11	11	11	14	14	17	22	22
F	70	70	70	70	70	70	102	102	102
G	90	90	90	90	90	90	125	125	125
L	41	44	45	51	54	55	60	65	76
n-Øp	4-10	4-10	4-10	4-10	4-10	4-10	4-12	4-12	4-12
H	19	19	19	19	19	19	25	30	30
H1	134	134	134	134	134	134	215	215	215
L1	145	145	145	145	145	145	216	216	216
X1	62	62	62	62	62	62	71	71	71
Kv	118	258	510	926	1500	2170	3842	5014	9230
Kgs	5.35	5.75	6.05	7.70	8.50	9.75	17.60	26.40	35.10

N. Part Name Materials

1	Body	Ductile Iron GGG40
2	Disc	Ductile Iron / Nickel Plated
3	Seat	NBR
4	Upper Shaft	Stainless Steel 410
5	Lower Shaft	Stainless Steel 410
6	Bushing	PTFE
7	Cotter Pin	Carbon Steel
8	Circlip	Carbon Steel
9	O-Ring	EPDM
10	Ring	PTFE
11	Gearbox	Aluminium
12	Bolt	Stainless Steel 304



V2. Dimensions in mm

This data sheet is designed as a guide and should not be regarded as wholly accurate in every detail. We reserve the right to amend the specification of any product without notice.