

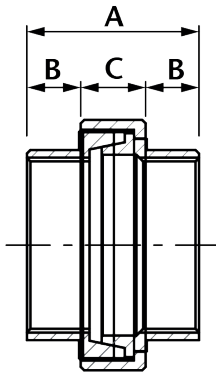
# CSU

## Conical Seat Union

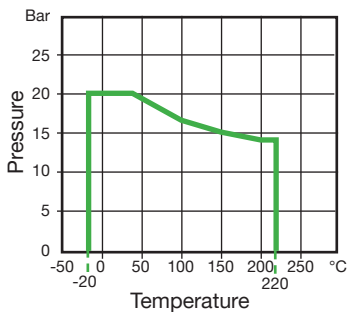


### Features

- Made from CF8M (316) Stainless Steel material and conform to ISO 4144 standard.
- Threads are to BSP Parallel (ISO 7/1) or NPT (ANSI B1.20.1).
- Material certificates available on request.
- Tested & inspected prior to despatch.
- 12 month warranty from date of installation.
- Manufactured in accordance with ISO9001:2015 quality system.



DN	A	B	C	Kgs
1/8"	31.0	9.00	13.0	0.056
1/4"	34.0	10.25	13.5	0.064
3/8"	37.0	11.00	15.0	0.092
1/2"	40.0	11.85	16.3	0.138
3/4"	43.0	12.85	17.3	0.206
1"	50.5	15.10	20.3	0.267
1 1/4"	54.5	16.10	22.3	0.471
1 1/2"	58.0	16.90	24.2	0.516
2"	65.5	19.15	27.2	0.845
2 1/2"	75.0	22.75	29.5	1.395
3"	83.5	26.25	31.0	1.670
4"	111.0	38.50	34.0	2.520



Temperature (°C)	Non-shock maximum working pressure (bar)
-20 to 40	20
100	16.5
150	15
200	14
220	13.5

- NOTE 1 Pressure for intermediate temperatures may be determined by the interpolation method.
- NOTE 2 Temperatures indicated are those of internal fluid.
- NOTE 3 Piping loads, stresses and moments are not taken into account.