

CSUMF

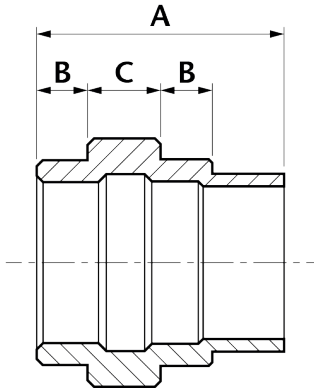
Conical Seat Union

Male / Female

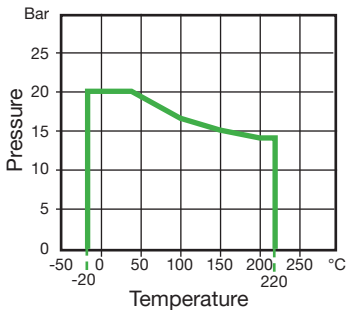


Features

- Made from CF8M (316) Stainless Steel material and conform to ISO 4144 standard.
- Female thread is to BSP Parallel (ISO 7/1) & male thread to BSP Taper (ISO 7/1), or both to NPT (ANSI B1.20.1).
- Material certificates available on request.
- Tested & inspected prior to despatch.
- 12 month warranty from date of installation.
- Manufactured in accordance with ISO9001:2015 quality system.



DN	A	B	C	Kgs
1/4"	44.8	10.3	13.5	0.072
3/8"	48.3	11.0	15.0	0.123
1/2"	54.8	11.9	16.3	0.159
3/4"	58.8	12.9	17.3	0.234
1"	68.8	15.1	20.3	0.313
1 1/4"	75.5	16.1	22.3	0.541
1 1/2"	79.0	16.9	24.2	0.615
2"	91.0	19.2	27.2	1.009



Temperature (°C)	Non-shock maximum working pressure (bar)
-20 to 40	20
100	16.5
150	15
200	14
220	13.5

- NOTE 1 Pressure for intermediate temperatures may be determined by the interpolation method.
- NOTE 2 Temperatures indicated are those of internal fluid.
- NOTE 3 Piping loads, stresses and moments are not taken into account.