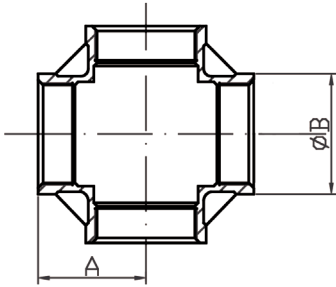


CT Cross Tee

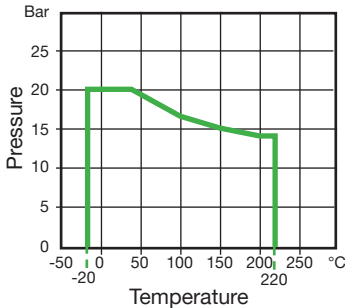


Features

- Made from CF8M (316) Stainless Steel material and conform to ISO 4144 standard.
- Threads are to BSP Parallel (ISO 7/1).
- Material certificates available on request.
- Tested & inspected prior to despatch.
- 12 month warranty from date of installation.
- Manufactured in accordance with ISO9001:2015 quality system.



DN	A	B	Kgs
1/4"	19.1	17.3	0.051
3/8"	23.0	21.0	0.071
1/2"	27.2	27.4	0.133
3/4"	32.0	32.0	0.181
1"	38.0	40.0	0.299
1 1/4"	45.0	49.6	0.489
1 1/2"	48.3	55.6	0.610
2"	57.0	68.4	0.864
2 1/2"	69.0	84.5	1.363
3"	78.0	98.4	2.107
4"	96.0	123.5	3.159



Temperature (°C)	Non-shock maximum working pressure (bar)
-20 to 40	20
100	16.5
150	15
200	14
220	13.5

- NOTE 1 Pressure for intermediate temperatures may be determined by the interpolation method.
- NOTE 2 Temperatures indicated are those of internal fluid.
- NOTE 3 Piping loads, stresses and moments are not taken into account.