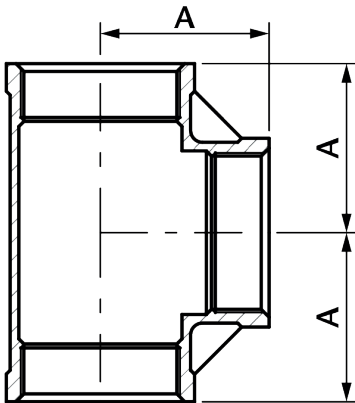


ET Equal Tee

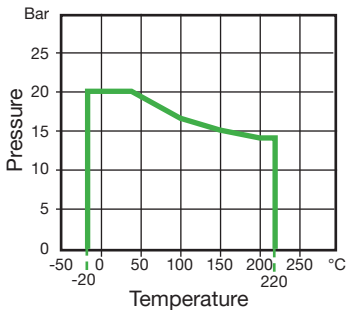


Features

- Made from CF8M (316) Stainless Steel material and conform to ISO 4144 standard.
- Threads are to BSP Parallel (ISO 7/1) or NPT (ANSI B1.20.1).
- Material certificates available on request.
- Tested & inspected prior to despatch.
- 12 month warranty from date of installation.
- Manufactured in accordance with ISO9001:2015 quality system.



| DN | A | Kgs |
|--------|------|-------|
| 1/8" | 17.0 | 0.028 |
| 1/4" | 19.0 | 0.037 |
| 3/8" | 23.0 | 0.063 |
| 1/2" | 27.0 | 0.107 |
| 3/4" | 32.0 | 0.158 |
| 1" | 38.0 | 0.256 |
| 1 1/4" | 45.0 | 0.371 |
| 1 1/2" | 48.0 | 0.514 |
| 2" | 57.0 | 0.692 |
| 2 1/2" | 69.0 | 1.237 |
| 3" | 78.0 | 1.756 |
| 4" | 96.0 | 3.145 |



| Temperature (°C) | Non-shock maximum working pressure (bar) |
|------------------|------------------------------------------|
| -20 to 40 | 20 |
| 100 | 16.5 |
| 150 | 15 |
| 200 | 14 |
| 220 | 13.5 |

- NOTE 1 Pressure for intermediate temperatures may be determined by the interpolation method.
- NOTE 2 Temperatures indicated are those of internal fluid.
- NOTE 3 Piping loads, stresses and moments are not taken into account.