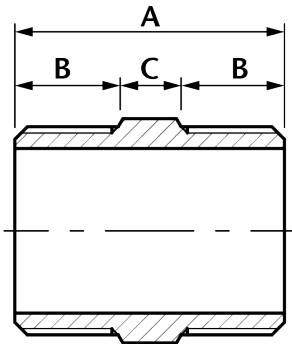


HN Hexagon Nipple

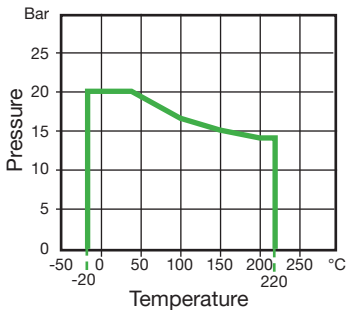


Features

- Made from CF8M (316) Stainless Steel material and conform to ISO 4144 standard.
- Threads are to BSP Taper (ISO 7/1) or NPT (ANSI B1.20.1).
- Material certificates available on request.
- Tested & inspected prior to despatch.
- 12 month warranty from date of installation.
- Manufactured in accordance with ISO9001:2015 quality system.



| DN | A | B | C | Kgs |
|--------|------|------|------|-------|
| 1/8" | 30.3 | 12.0 | 6.3 | 0.016 |
| 1/4" | 32.0 | 13.4 | 5.2 | 0.021 |
| 3/8" | 36.7 | 14.8 | 7.1 | 0.035 |
| 1/2" | 41.7 | 16.4 | 8.8 | 0.050 |
| 3/4" | 45.0 | 18.5 | 8.0 | 0.070 |
| 1" | 48.1 | 18.6 | 10.9 | 0.119 |
| 1 1/4" | 53.4 | 20.6 | 12.2 | 0.180 |
| 1 1/2" | 55.5 | 21.5 | 12.5 | 0.217 |
| 2" | 64.2 | 25.6 | 13.0 | 0.328 |
| 2 1/2" | 76.0 | 30.8 | 14.4 | 0.661 |
| 3" | 79.7 | 33.3 | 13.1 | 0.855 |
| 4" | 85.7 | 36.0 | 13.7 | 1.327 |



| Temperature (°C) | Non-shock maximum working pressure (bar) |
|------------------|--|
| -20 to 40 | 20 |
| 100 | 16.5 |
| 150 | 15 |
| 200 | 14 |
| 220 | 13.5 |

- NOTE 1 Pressure for intermediate temperatures may be determined by the interpolation method.
- NOTE 2 Temperatures indicated are those of internal fluid.
- NOTE 3 Piping loads, stresses and moments are not taken into account.