

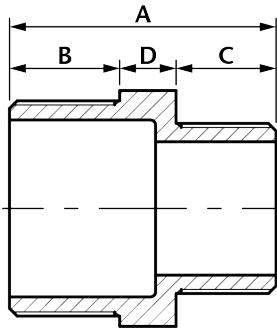
# RHN

## Reducing Hexagon Nipple

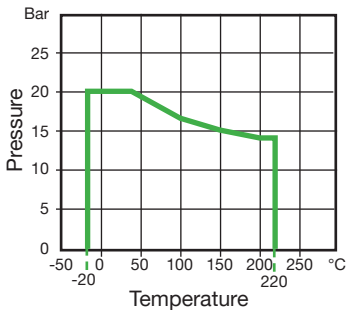


### Features

- Made from CF8M (316) Stainless Steel material and conform to ISO 4144 standard.
- Threads are to BSP Taper (ISO 7/1) or NPT (ANSI B1.20.1).
- Material certificates available on request.
- Tested & inspected prior to despatch.
- 12 month warranty from date of installation.
- Manufactured in accordance with ISO9001:2015 quality system.



DN	A	B	C	D	Kgs
1/4" x 1/8"	30.0	13.3	11.0	5.7	0.017
3/8" x 1/4"	35.0	14.7	13.0	7.3	0.035
1/2" x 1/4"	38.0	17.0	13.9	7.1	0.045
1/2" x 3/8"	39.8	17.0	14.5	8.3	0.047
3/4" x 1/2"	43.5	18.0	16.8	8.7	0.074
1" x 1/2"	47.0	18.9	17.0	11.1	0.106
1" x 3/4"	48.0	18.7	18.0	11.3	0.105
1 1/4" x 1/2"	50.0	21.2	17.2	11.6	0.159
1 1/4" x 3/4"	51.0	21.2	18.0	11.8	0.153
1 1/4" x 1"	52.0	21.5	19.5	11.0	0.174
1 1/2" x 3/4"	52.5	22.2	18.0	12.3	0.220
1 1/2" x 1"	53.2	22.2	19.0	12.0	0.222
1 1/2" x 1 1/4"	55.0	22.0	21.0	12.0	0.224
2" x 1"	57.7	26.0	19.3	12.4	0.323
2" x 1 1/4"	60.4	25.7	21.4	13.3	0.334
2" x 1 1/2"	60.4	26.0	22.3	12.1	0.336
2 1/2" x 2"	70.7	31.0	26.0	13.7	0.606
3" x 2"	72.0	33.0	26.0	13.0	0.870
3" x 2 1/2"	77.6	33.0	31.0	13.6	0.841
4" x 2"	75.7	36.0	26.0	13.7	1.005
4" x 3"	82.7	36.0	32.0	14.7	1.180



Temperature (°C)	Non-shock maximum working pressure (bar)
-20 to 40	20
100	16.5
150	15
200	14
220	13.5

- NOTE 1 Pressure for intermediate temperatures may be determined by the interpolation method.
- NOTE 2 Temperatures indicated are those of internal fluid.
- NOTE 3 Piping loads, stresses and moments are not taken into account.