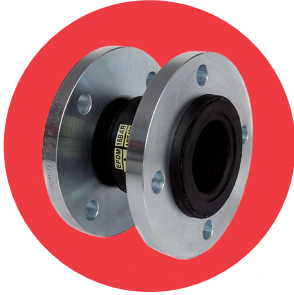


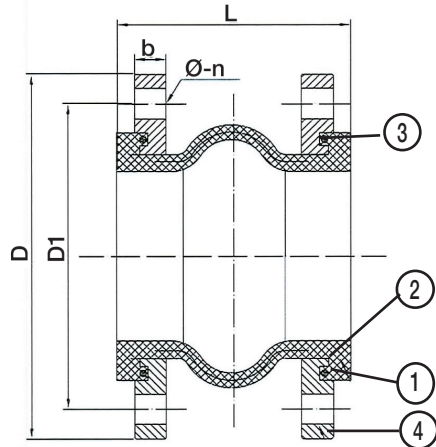
ART 420

EPDM PN16 Flanged Flexible Connector



Features

- Flanged PN16 BS4504
- Zinc plated carbon steel flanges
- Nylon cord fabric with steel reinforcement
- Available with NBR body



Technical data

Max pressure: 16 Bar

Working temp: -20°C to +100°C

N.	Part Name	Materials
1	Body	EPDM
2	Reinforcement	Nylon Cord Wire
3	Pressure Ring	Steel Wire
4	Flange	Carbon Steel

DN	1 1/4"	1 1/2"	2"	2 1/2"	3"	4"	5"	6"	8"	10"	12"	14"	16"	18"	20"	24"
D	140	150	165	185	200	220	250	285	340	405	460	520	580	640	715	840
D1	100	110	125	145	160	180	210	240	295	355	410	470	525	585	650	770
b	16	16	18	18	20	20	22	22	24	26	28	30	32	34	34	36
L	130	130	130	130	130	130	130	130	130	130	130	255	255	255	255	260
Ø-n	18-4	18-4	18-4	18-4	18-8	18-8	18-8	22-8	22-12	26-12	26-12	26-16	30-16	30-20	33-20	36-20
HD	12	12	12	12	12	12	12	12	12	12	12	25	25	25	25	25
DA	15°	15°	15°	15°	15°	15°	15°	15°	15°	15°	15°	8°	8°	8°	8°	8°
Ext	8	8	8	8	8	8	8	8	8	8	8	14	14	14	14	14
Comp	15	15	15	15	15	15	15	15	15	15	15	30	30	30	30	30
Kgs	3.2	3.7	5	6.1	7	8.5	11.5	14.4	20	26	32	41.6	56.8	70.3	82.8	99.4



HD - Horizontal Displacement



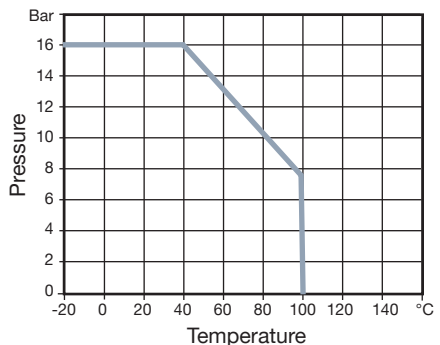
DA - Deflection Angular



Ext - Extension



Comp - Compression



V1. Dimensions in mm

This data sheet is designed as a guide and should not be regarded as wholly accurate in every detail. We reserve the right to amend the specification of any product without notice.