

# ART 413

## M/F Threaded Stainless Steel Expansion Joint with SS Mesh



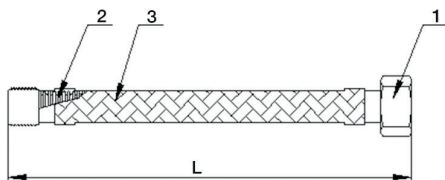
### Features

- Screwed BSP Taper (ISO 7/1)
- Stainless Steel threaded union end & Male end
- Stainless Steel mesh

### Technical data

Max pressure: 25 Bar

Working temp: -15°C to +200°C



N.	Part Name	Materials
1	Threaded Joint	Stainless Steel 304
2	Bellow	Stainless Steel 304
3	Metal Mesh Sleeve	Stainless Steel 304

Nominal Diameter		Length
DN	Inch	
4	3/16	300
6	1/8	300
8	1/4	300
10	3/8	300
15	1/2	300
20	3/4	300
25	1	300
32	1 1/4	300
40	1 1/2	300
50	2	300