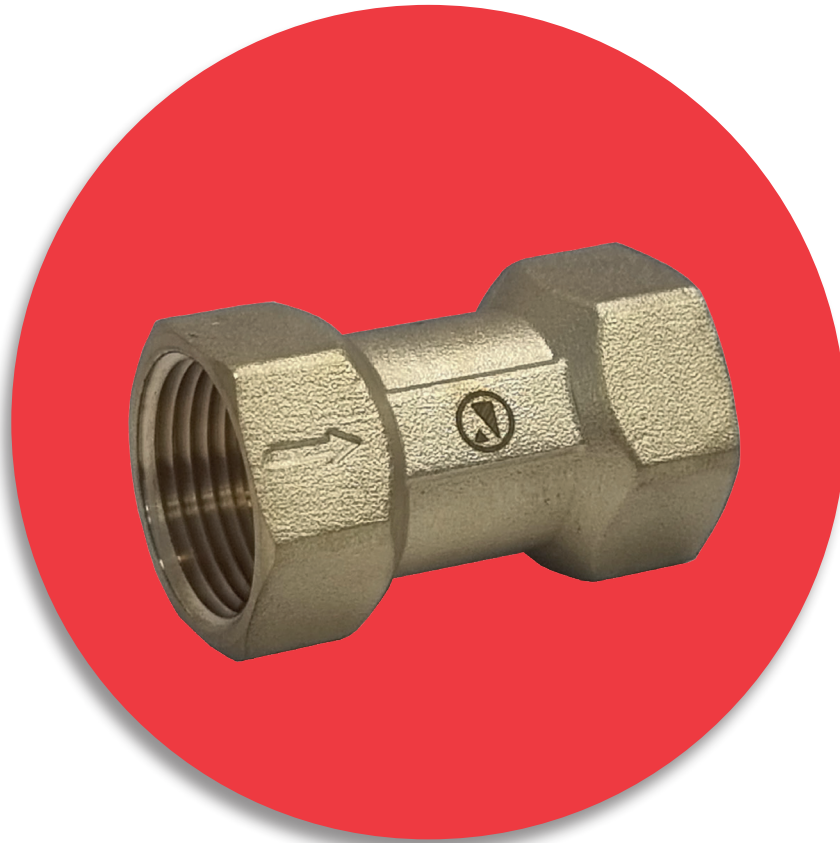




Installation & Operating Manual



Brass Single Check Valves

Albion Valves (UK) Ltd
www.albionvalvesuk.com
Email: sales@albionvalvesuk.com
Tel: 01226 729900



Contents

1. Introduction
2. Technical Data
3. Valve Features
4. Valve Installation
5. Approvals Classification
6. Troubleshooting
7. Warranty

1. Introduction

- Albion Valves (UK) Ltd range of brass single check valves can be used to prevent backflow and protect water supplies from contamination.
- Albion Valves (UK) Ltd range of single check valves have been classified in accordance with PED 2014/68/EU.

2. Technical Data

Valve Type	Size Range	Connection Type	Temperature Rating	Pressure Rating (Max)
ART 38	DN15 – DN50	ISO 228/1	0°C – 85°C	PN 16
ART 39	15mm – 28mm	EN1254-2 Compression	0°C – 85°C	PN 10

3. Valve Features

- ART 38 / ART 39 brass single check valves are designed to protect against the risk of backflow and back siphonage contamination.
- ART 38 / ART 39 brass single check valves are approved as Backflow Prevention Devices for Category 2 Fluids as defined in Schedule 1 of the Water Supply (Water Fittings) Regulations and/or Scottish Water Byelaws.

4. Valve Installation

- Albion Valves (UK) Ltd recommend that the installer adheres to the installation requirements as specified by the Water Supply Water Fittings Regulations 1999.
- ART 38 / ART 39 should be sited to ensure ease of access.
- It is the responsibility of the installer to ensure the valve is suitable for service conditions e.g., temperature, pressure, and service media.
- Consideration should always be given to galvanic corrosion during installation.
- It is the responsibility of the installer to ensure that the valve, and adjoining pipework is suitably supported to avoid any undue stresses being applied to the valve.
- Suitable sealing materials should be used during installation.



- ART 38 / ART 39 can be installed in either horizontal or vertical pipework systems. If in a vertical pipework system, the flow must flow only in an upwards direction.

5. Approvals Classification

- Please contact Albion Valves (UK) Ltd Quality Department for further details of any specific product approvals and accreditations.

6. Troubleshooting

- Albion Valves (UK) Ltd range of ART 38 / ART 39 do not require any routine maintenance.
- A full risk assessment should be undertaken prior to any works taking place.

7. Warranty

- Albion Valves (UK) Ltd ART 38 and ART 39 are supported by a 12 month warranty. Further details can be found on our website.



About Albion Valves (UK) Ltd

Albion has been supplying valves and fittings to the building services and industrial markets for the past 40 years.

Albion was created with the sole purpose of providing quality products at an affordable price. With a growing reputation for quality and reliability, Albion is now an established brand providing the industry with a trusted alternative to premium-priced products.

Our commitment to setting the highest standards in all areas of our business means, if you're looking for quality, service, delivery and choice — you'll find it's all at Albion.

Quality

Whatever you need, you can rest assured that if it comes from Albion it has been designed and manufactured to deliver optimum performance and is accredited with the necessary approvals. Our in-house quality department are always on hand too!

Service

We pride ourselves on our customer service – we have even won awards for it! Our cradle to grave approach means you will never be on your own!

Delivery

We know that time is money, and when a priority project depends on a part you can trust Albion to deliver – next day for all orders placed before 4:00PM.

Choice

We may have started out with a single brass ball valve, but our range has grown substantially since and we now consider ourselves to be a 'One Stop Shop' with our comprehensive range. It is becoming more and more apparent to the industry, that it really is all at Albion.