

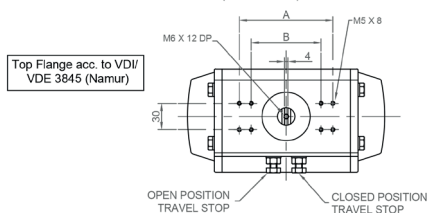
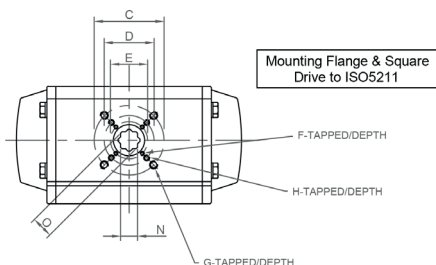
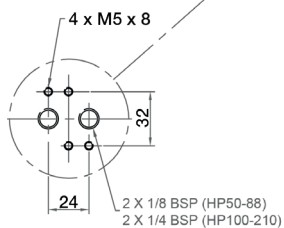
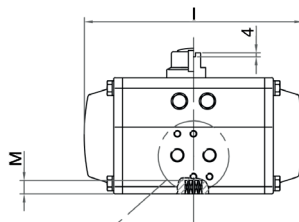
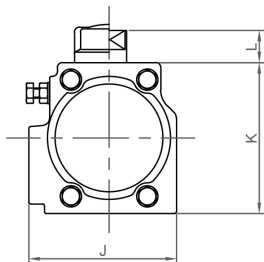
# HP Pneumatic Actuator

## HP Pneumatic Actuator for Albion ball and butterfly valves



### Features

- Double acting and spring return models
- Hard anodised aluminium housing
- Wide range of torque & control options available



HPS / HPD	50	63	66	75	88	100	115
A	-	-	-	-	-	-	-
B	80	80	80	80	80	80	80
C	50	70	70	70	102	102	102
D	36	50	50	50	70	70	70
E	-	-	-	-	50	50	-
F	-	-	-	-	M6/9	M6/9	-
G	M6/9	M8/12	M8/12	M8/12	M10/15	M10/15	M10/15
H	M5/8	M6/9	M6/9	M6/9	M8/12	M8/12	M8/12
I	144	163	202	210	247	268	316
J	72	85	85	96	108	123	141
K	73	87	87	104	116	128	146
L	20	20	20	20	20	20	20
M	14	18	18	22	22	22	32
N	11	14	14	17	17	17	22
O	14.2	18.2	18.2	22.2	22.2	22.2	28.2

HPS / HPD	125	145	160	180	200	210
A	-	130	130	130	130	130
B	80	80	80	80	80	80
C	125	125	125	125	140	140
D	102	102	102	102	-	-
E	70	-	-	-	-	-
F	M8/12	-	-	-	-	-
G	M12/18	M12/18	M12/18	M12/18	M16/24	M16/24
H	M10/15	M10/15	M10/15	M10/15	-	-
I	347	414	467	497	555	628
J	151	172	190	206	227	236
K	159	179	196	221	247	256
L	20	30	30	30	30	30
M	32	36	36	39	39	43
N	22	27	27	36	36	36
O	28.2	36.2	36.2	48.2	48.2	48.2

For torque information please contact the sales office.

V1. Dimensions in mm

This data sheet is designed as a guide and should not be regarded as wholly accurate in every detail. We reserve the right to amend the specification of any product without notice.