

# ART 298

## Brass Test Point with Stainless Steel Extension. Pair - Red & Blue

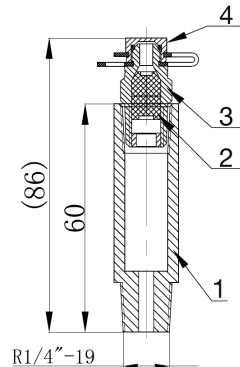


### Features

- 1/4" Male BSP Taper
- Self Sealing pressure / temperature binder test point

### Technical data

Max pressure: 16 Bar  
25 Bar option also available  
Working temp: -10°C to +120°C



N.	Part Name	Materials
1	Extension Tube	Stainless Steel 304
2	Sealing Part	EPDM
3	Test Point	Brass CW602N
4	Cap	Brass CW602N

The test point is designed for use with 'needle' type push-in probes.

The body of the test point houses a self-sealing elastomeric core which minimises leakage when the test probe is withdrawn.

The cap contains a sealing washer to prevent the ingress of debris into the test point and to provide an extra seal against any possible seepage.

A coloured plastic strap retains the cap when pressure measurements are being taken. This is an important feature when installed in ceiling voids, for example, avoiding the cap being lost. The RED and BLUE straps are a visual indicator to show which is the upstream (+ RED) and the downstream (- BLUE) pressure points, important when connecting a manometer or other differential pressure measurement device.

Note: It is advisable to apply silicone oil or grease to the probe prior to insertion to avoid causing damage to the elastomer core.

**Safety Note:** Test point maximum recommended temperature: 120°C.

We do not suggest this product is used on water applications above boiling point as the sudden venting of the system to atmospheric pressure can be extremely dangerous.