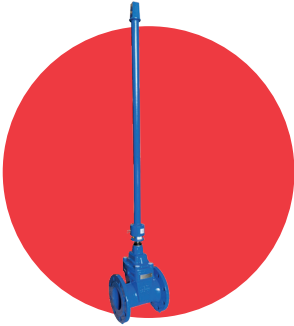


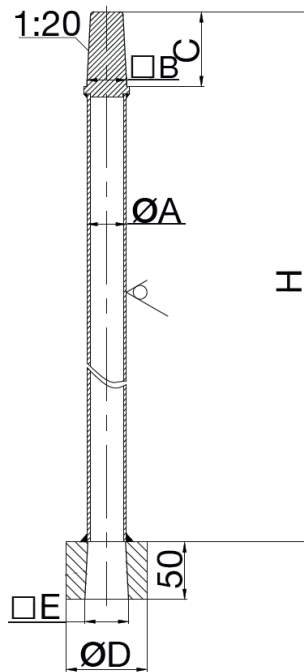
Extension Spindle

To suit ART 231



Features

- Epoxy Coated Carbon Steel
- Extension to suit underground / buried resilient seated gate valve
- Comes with polyethylene pipe sleeve suiting spindle length
- Stainless Steel option also available



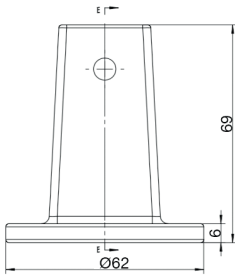
Extension Spindle Dimensions

DN	DN50- DN300	DN350- DN400	DN450- DN600
A	Ø40	Ø48	Ø50
B	35	35	48
C	65	65	75
D	Ø70	Ø85	Ø85
E	35	48	48
H	- - - As per customer requirement - - -		

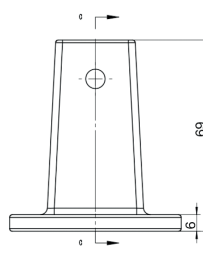
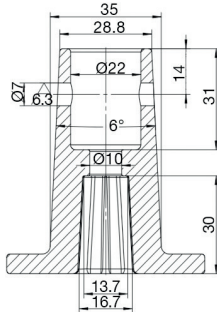
Extension Spindle To suit ART 231



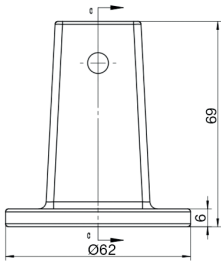
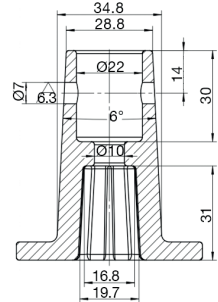
Cap Tops



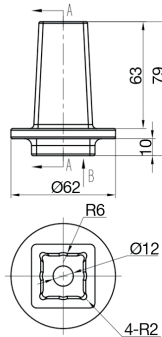
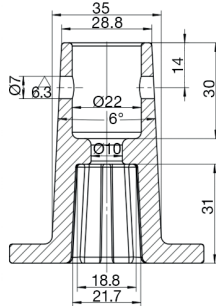
DN50-65



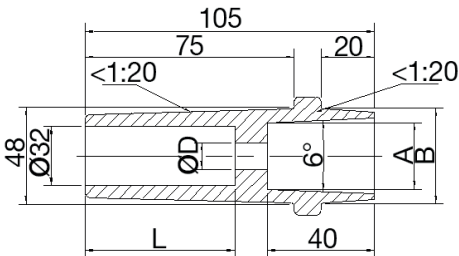
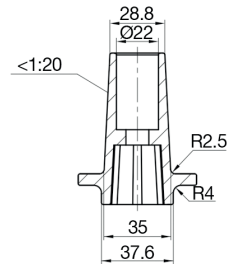
DN80-100



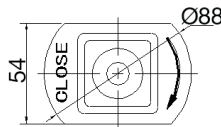
DN125-200



DN250-300



DN350-600



DN	DN350- DN450	DN500- DN600
A	27	32
B	54	54
L	55	50
ØD	12	14