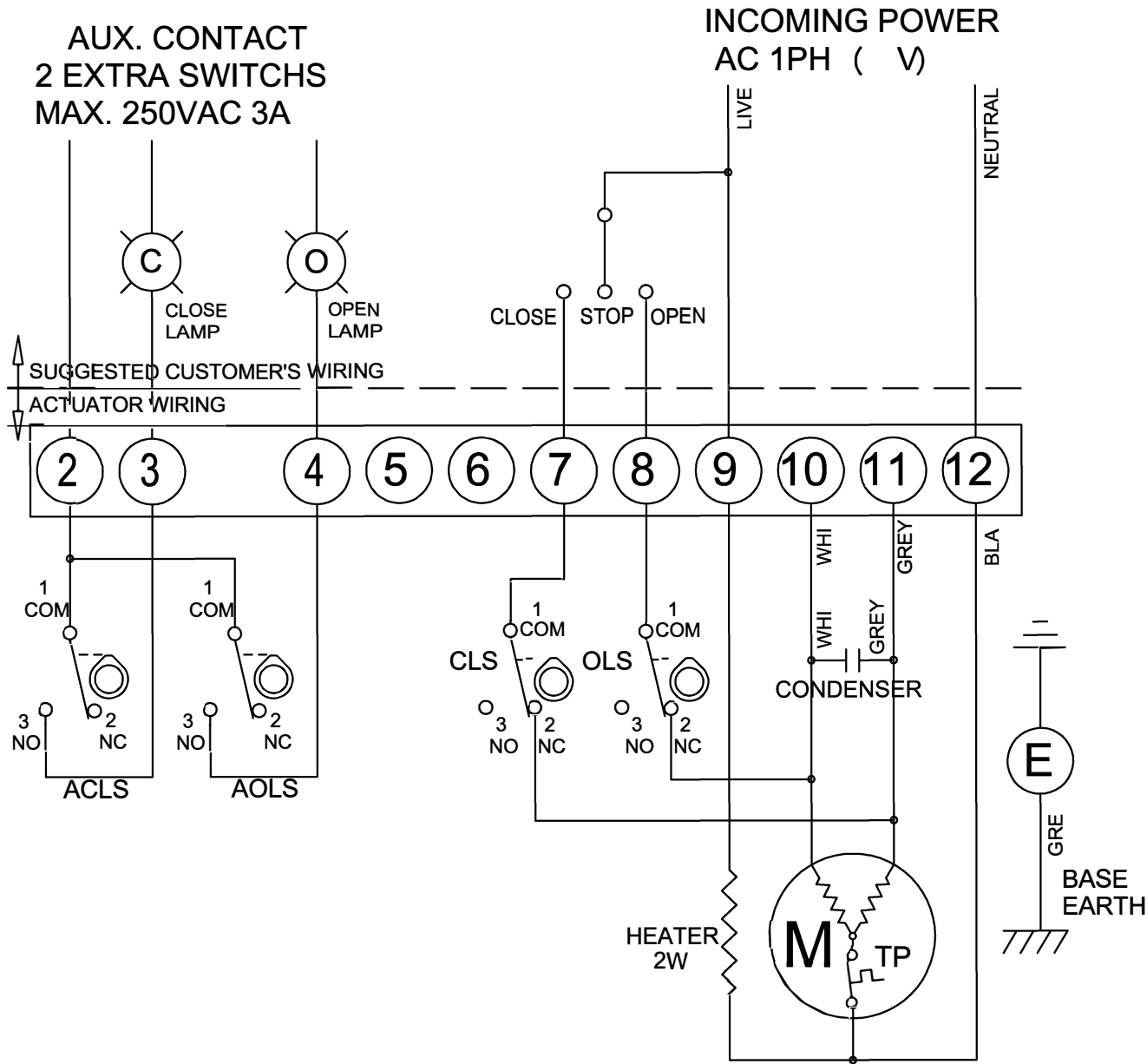




HQ4 & HQ6 110V 230V



TORQUE AND LIMIT SWITCH OPERATION			
SWITCH	CLOSE ←	INTERMEDIATE →	OPEN →
CLS 1-2			
CLS 1-3			
OLS 1-2			
OLS 1-3			
ACLS1-2			
ACLS1-3			
AOLS1-2			
AOLS1-3			

SYMBOL	DESCRIPTION	RATING
CLS	CLOSE LIMIT SWITCH	250VAC 5A
OLS	OPEN LIMIT SWITCH	250VAC 5A
ACLS	AUX. CLOSE LIMIT SWITCH	250VAC 5A
AOLS	AUX. OPEN LIMIT SWITCH	250VAC 5A
TP	THERMAL PROTECTOR	250VAC 15A

*EACH ACTUATOR SHOULD BE POWERED THROUGH IT'S OWN INDIVIDUAL SWITCH OR RELAY CONTACTS TO PREVENT CROSS FEED BETWEEN TWO OR MORE ACTUATORS.

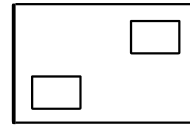
PART NAME	1PH WIRING DIAGRAM STANDARD	
DWG. NO	HQ-110-B	
DATE	2001.05.10	ISSUE REF: B
HQ-004	ALBION VALVES (UK) LTD 01226 729900	
HQ-006		
APPLICATION		



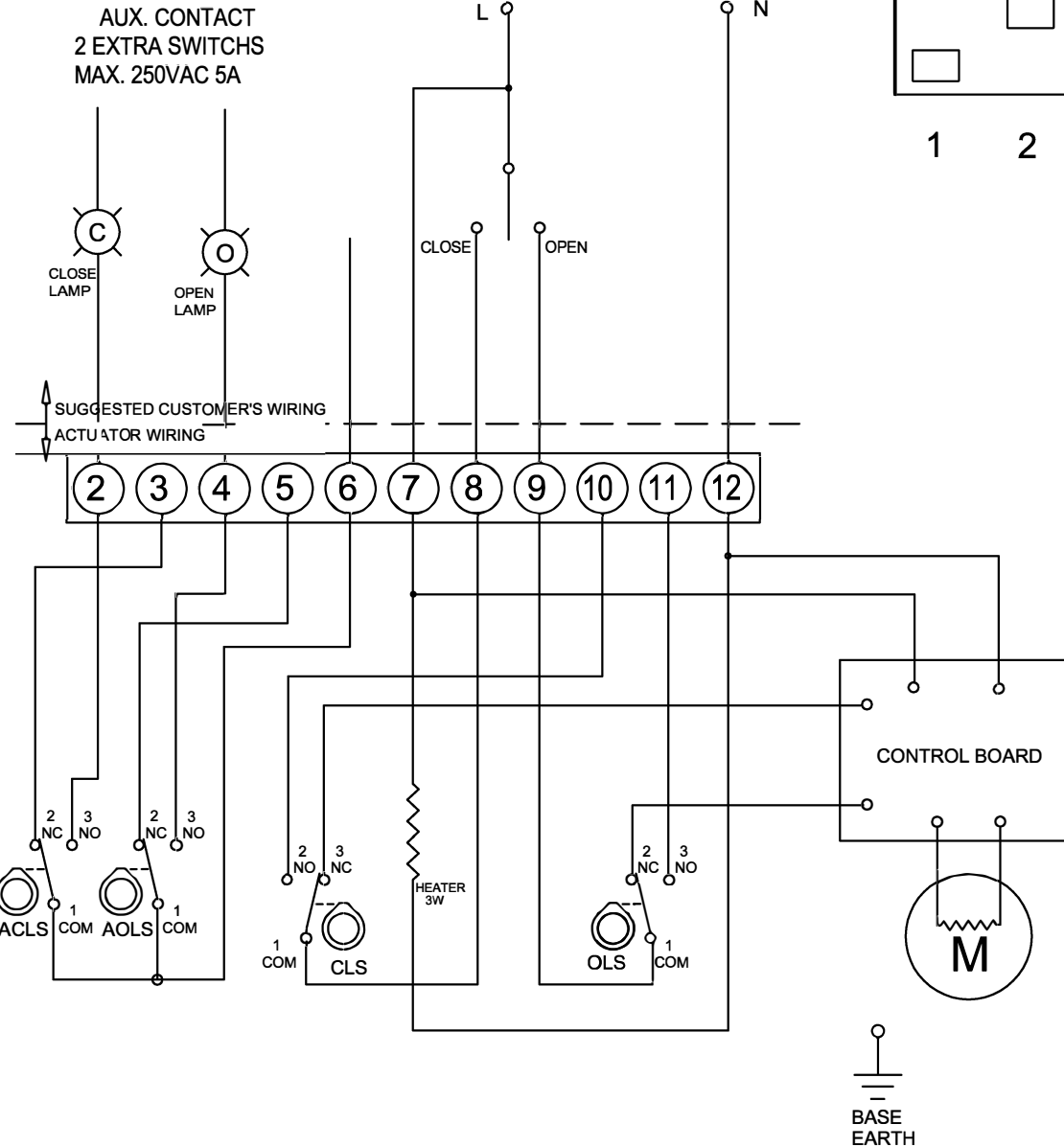
HQ4 & HQ6 24V AC

AC (24 V)

DIP SWITCH SETTING



1 2



TORQUE AND LIMIT SWITCH OPERATION

SWITCH	CLOSE ←	INTERMEDIATE	→ OPEN
CLS 1-2			
CLS 1-3			
OLS 1-2			
OLS 1-3			

SYMBOL	DESCRIPTION	RATING
CLS	CLOSE LIMIT SWITCH	250VAC 5A
OLS	OPEN LIMIT SWITCH	250VAC 5A

*EACH ACTUATOR SHOULD BE POWERED THROUGH IT'S OWN INDIVIDUAL SWITCH OR RELAY CONTACTS TO PREVENT CROSS FEED BETWEEN TWO OR MORE ACTUATORS.

PART NAME AC WIRING DIAGRAM STANDARD (AC 24V)

DWG. NO HQ-740-B

DATE 2004.12.01 ISSUE REF: B

HQ-006

HQ-004

APPLICATION

ALBION VALVES (UK) LTD

TEL: 01226 729900

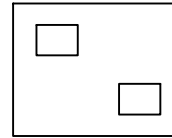
DOC : WD-01 1-09-2008



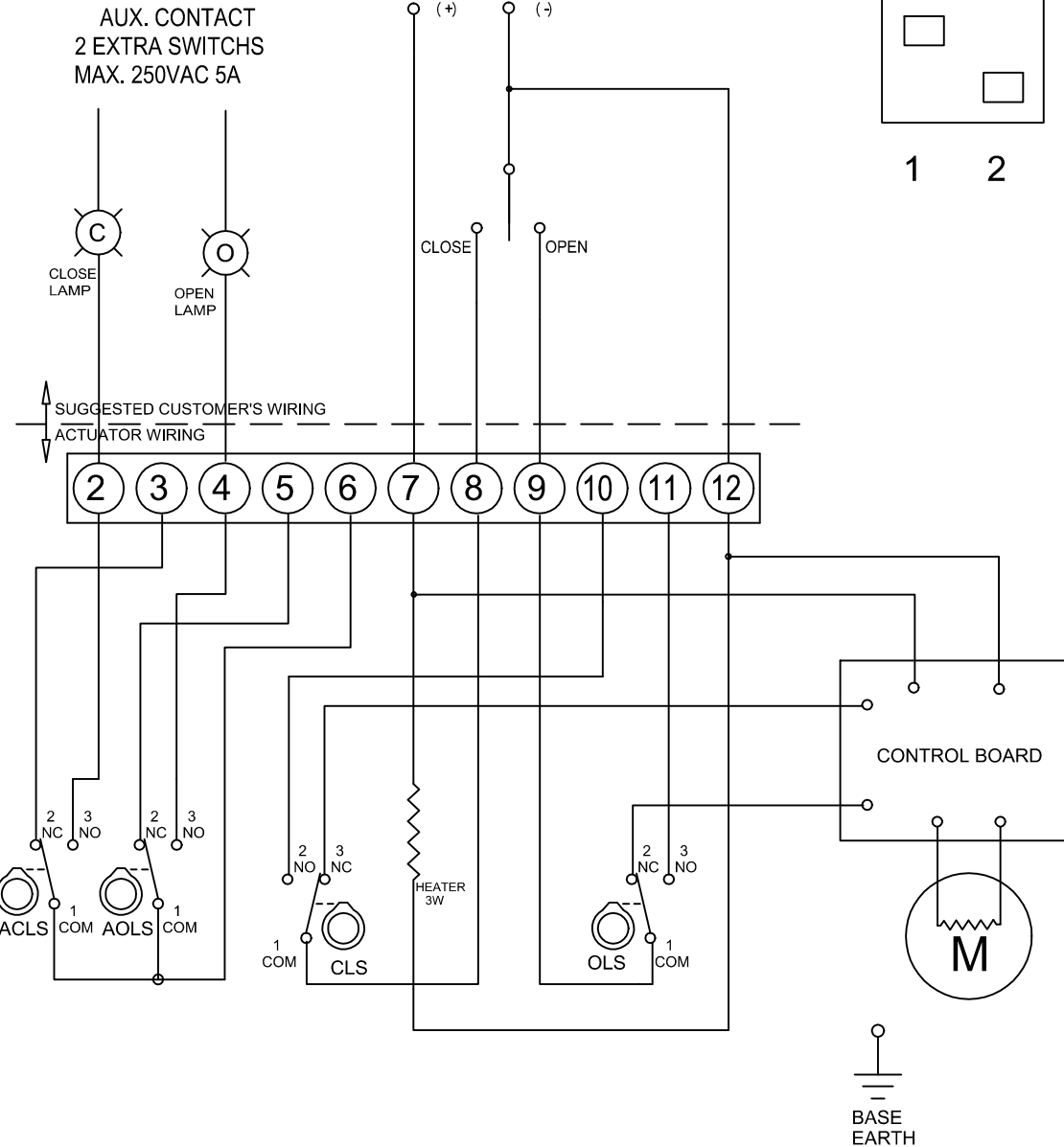
HQ4 & HQ6 24V DC

DC (24 V)

DIP SWITCH SETTING



1 2



TORQUE AND LIMIT SWITCH OPERATION

SWITCH	CLOSE ←	INTERMEDIATE	→ OPEN
CLS 1-2			
CLS 1-3			
OLS 1-2			
OLS 1-3			

SYMBOL	DESCRIPTION	RATING
CLS	CLOSE LIMIT SWITCH	250VAC 5A
OLS	OPEN LIMIT SWITCH	250VAC 5A

*EACH ACTUATOR SHOULD BE POWERED THROUGH IT'S OWN INDIVIDUAL SWITCH OR RELAY CONTACTS TO PREVENT CROSS FEED BETWEEN TWO OR MORE ACTUATORS.

PART NAME	DC WIRING DIAGRAM STANDARD (DC 24V)	
DWG. NO	HQ-840-B	
DATE	2004.12.01	ISSUE REF: B
HQ-006	ALBION VALVES (UK) LTD 01226 729900	
HQ-004		
APPLICATION		

DOC : WD-01 1-09-2008