

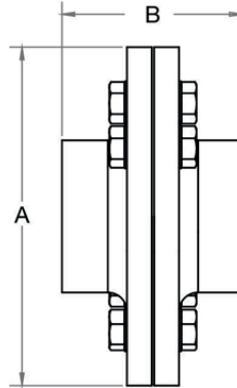
# DEFFF

## Dielectric Flange



### Features

- Steel side female threading x brass side female threading
- Steel side threading BSPT / NPT
- Brass side threading BSPT / NPT



### Technical data

Max. pressure: 17.2 Bar (250psi)

Max. temp: 120°C (248°F)

Model	Steel Side Connection		Copper Side Connection		A		B		Kgs
					in	mm	in	mm	
DEF-FF-1	2 1/2"	FPT	1 1/4"	FPT	7 1/4	184	4 1/4	104	6.8
DEF-FF-2	2 1/2"	FPT	1 1/2"	FPT	7 1/4	184	4 1/4	104	6.9
DEF-FF-3	2 1/2"	FPT	2"	FPT	7 1/4	184	4 1/4	106	7.1
DEF-FF-4	2 1/2"	FPT	2 1/2"	FPT	7 1/4	184	4 1/4	108	7.3
DEF-FF-5	3"	FPT	1 1/2"	FPT	7 3/4	197	4 1/2	110	8.2
DEF-FF-6	3"	FPT	2"	FPT	7 3/4	197	4 1/2	112	8.4
DEF-FF-7	3"	FPT	2 1/2"	FPT	7 3/4	197	4 1/2	114	8.6
DEF-FF-8	3"	FPT	3"	FPT	7 3/4	197	4 1/2	114	8.8
DEF-FF-9	4"	FPT	2 1/2"	FPT	8 3/4	222	4 3/4	121	15.3
DEF-FF-10	4"	FPT	3"	FPT	8 3/4	222	4 3/4	121	15.6
DEF-FF-11	4"	FPT	4"	FPT	8 3/4	222	4 3/4	121	15.9
DEF-FF-12	5"	FPT	3"	FPT	9 3/4	248	5 1/4	133	19.1
DEF-FF-13	5"	FPT	4"	FPT	9 3/4	248	5 1/4	133	19.4
DEF-FF-14	5"	FPT	5"	FPT	9 3/4	248	5 1/4	133	19.7
DEF-FF-15	6"	FPT	4"	FPT	11 1/4	285	6	153	23
DEF-FF-16	6"	FPT	5"	FPT	11 1/4	285	6	153	23.4
DEF-FF-17	6"	FPT	6"	FPT	11 1/4	285	6	153	23.8
DEF-FF-18	8"	FPT	5"	FPT	13 3/8	340	7 1/4	185	32.5
DEF-FF-19	8"	FPT	6"	FPT	13 3/8	340	7 1/4	185	33
DEF-FF-20	8"	FPT	8"	FPT	13 3/8	340	7 1/4	185	33.5

Part Name	Materials	Part Name	Materials
Steel Flange	Steel with Epoxy Coating	Bolt Insulators	Nylon
Bolts	Steel / Zinc Plated	Gasket	NBR (EPDM option)
Washer	Steel / Zinc Plated	Tail Piece	Lead Free Brass (LF)
Nuts	Steel / Zinc Plated	Tail Piece Insulator	Nylon

V2. Dimensions in mm

This data sheet is designed as a guide and should not be regarded as wholly accurate in every detail. We reserve the right to amend the specification of any product without notice.