

DEFWB

Dielectric Flange



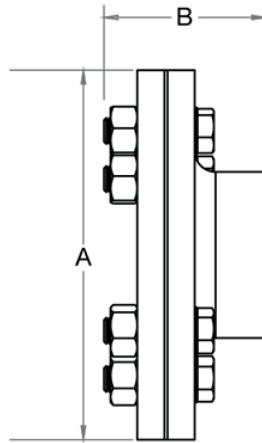
Features

- Steel side weld end x bronze side solder end
- Flanged to PN16 or ANSI 150
- Bronze side solder end
- Steel side welded end

Technical data

Max. pressure: 17.2 Bar (250psi)

Max. temp: 82°C (180°F)



Model	Steel Side Connection	Copper Side Connection	A		B		Kgs		
			in	mm	in	mm			
DEF-WB-1	2 1/2"	Weld	67mm (2 5/8")	Solder	7 1/4	184	3 1/2	89	5.4
DEF-WB-2	3"	Weld	80mm (3 1/8")	Solder	7 3/4	197	3 3/4	95	6.4
DEF-WB-3	4"	Weld	105mm (4 1/8")	Solder	8 3/4	222	4 3/8	111	13.6
DEF-WB-4	5"	Weld	130mm (5 1/8")	Solder	9 3/4	248	5 1/4	133	16.8
DEF-WB-5	6"	Weld	155mm (6 1/8")	Solder	11 1/4	285	6	153	19.2
DEF-WB-6	8"	Weld	206mm (8 1/8")	Solder	13 3/8	340	7 3/4	196	27.3

Part Name	Materials	Part Name	Materials
Steel Flange	Steel with Epoxy coating	Bolt Insulators	Nylon
Bolts	Steel / Zinc Plated	Gasket	NBR (EPDM option)
Washer	Steel / Zinc Plated	Tail Piece	Bronze
Nuts	Steel / Zinc Plated	Tail Piece Insulator	Nylon