

ART 622

Brass Adjustable Pressure Relief Valve

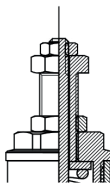


Features

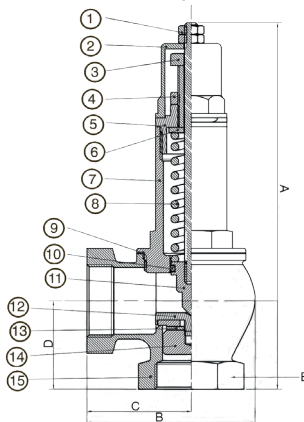
- Screwed BSP Parallel (ISO 228/1)
- Suitable for gases, liquids and steam
- Adjustable range: 0.5 to 16 bar
- PED 2014/68/EU
- Manual test function
- Suitable for use as a bypass valve
- This product should not be used as a safety valve

Technical data

Max pressure: 16 Bar
 Adjustable pressure range: 0.5 -16 Bar
 Working temp: 0°C to 150°C



Alternative top on
2 1/2" and 3" valves.

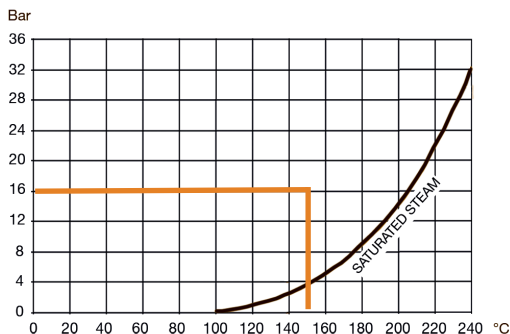


DN	1/2"	3/4"	1"	1 1/4"	1 1/2"	2"	2 1/2"	3"
A	136	158	169	207	230	259	305	315
B	56	64	76	90	100	124	135	145
C	35.5	39.5	47	56	62.5	75	79.5	84.5
D	30	32	40	44	47	60	69	78
E	28	35	41	49	56	71	88	100
Kgs	0.47	0.69	0.97	1.57	2.04	3.18	4.52	5.30

N. Part Name

Materials

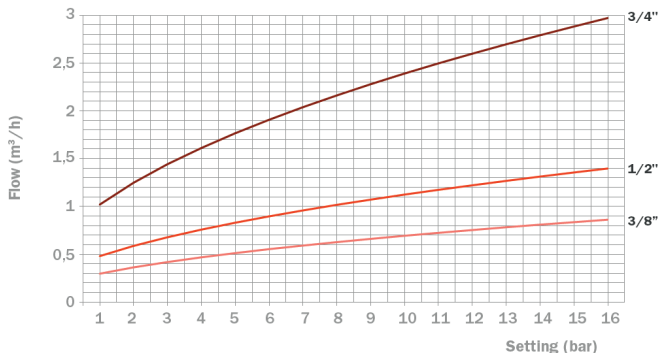
1 Nut and Locknut	Brass CW617N
2 Housing Cap	Brass CW617N
3 Regulator	Brass CW617N
4 Locknut Regulator	Brass CW617N
5 Regulator Seat	Brass CW617N
6 Spring Pusher	Brass CW617N
7 Bonnet	1/2"-1.1/2" Brass EN12165-CW617N 2"-3" Brass EN1982-CC754S
8 Spring	Galvanised Steel EN10270-1 / AISI302
9 Gasket	Pressed Fibre
10 O-Ring	EPDM Rubber
11 Rod	Brass CW617N
12 Valve Seat	Brass CW617N
13 Valve Gasket	EPDM Rubber
14 Valve Nut	Brass CW617N
15 Body	Brass EN1982-CC754S



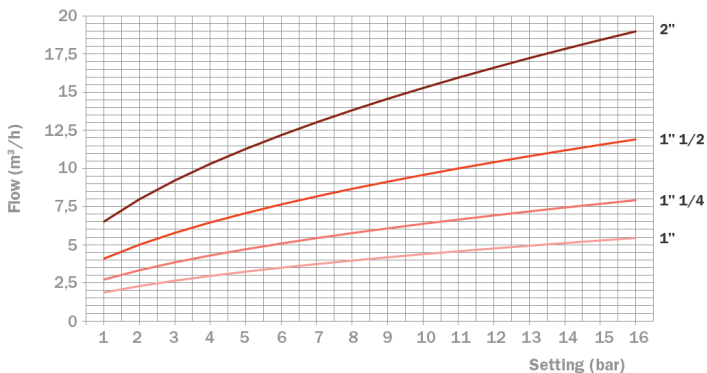
Discharge Charts

Discharging Pressure Flow - (setting pressure and overpressure)

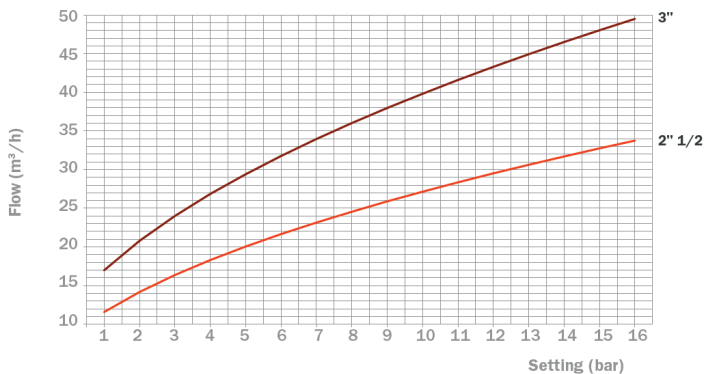
H₂O 3/8"-3/4"



H₂O 1"-2"



H₂O 2.1/2"-3"

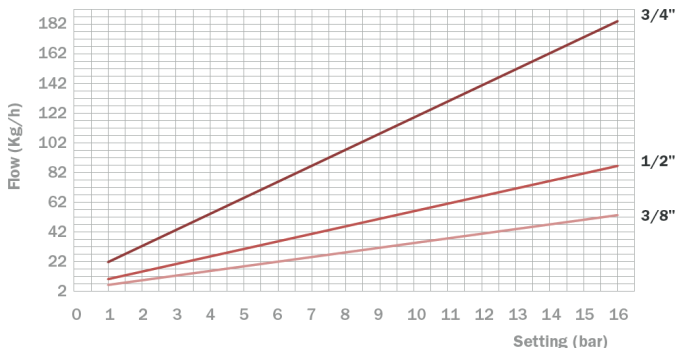


Discharge Charts

Discharging Pressure Flow - (setting pressure and overpressure)

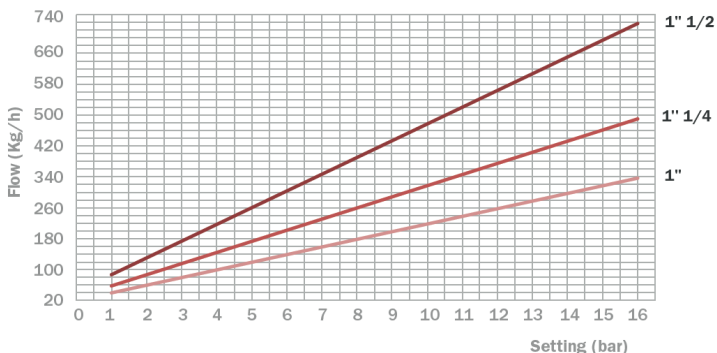
Gas (Category 1 as per PED 2014/68/EU)

3/8"-3/4"



Gas (Category 1 as per PED 2014/68/EU)

1"-1.1/2"



Gas (Category 1 as per PED 2014/68/EU)

2"-3"

