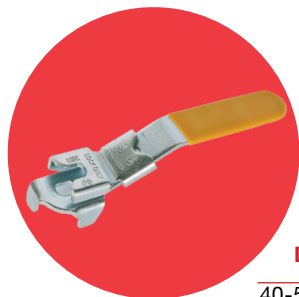


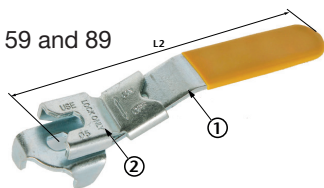
ART 257C

Locking Device



Features

- To suit ART 40, 41, 50, 59 and 89

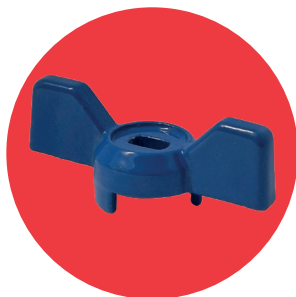


DN	1/2" - 3/4" - 15mm	3/4" - 22mm	1" - 28mm	1 1/4" - 35mm	1 1/2" - 42mm	2" - 54mm	2 1/2"	3"	4"
40-50-59-89	C1	C1	C2	C3	C3	C4	C5	C5	C5
	C1		C2		C3		C4		C5
L2	100		125		150		165		286

N.	Part Name	Materials
1	Handle	Steel / Nickel Plated
2	Slide Device	Steel / Nickel Plated

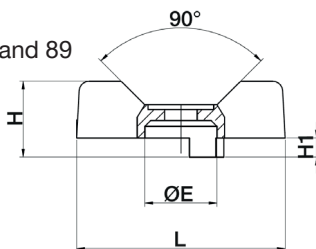
Tee Handles

Available in Red, Yellow, and Blue



Features

- To suit ART 40, 41, 50, 59 and 89



DN	1/4"	3/8"	1/2" - 15mm	3/4" - 22mm	1" - 28mm
ART 40	1B	1B	1B	1B	2B
ART 41	1B	1B	1B	1B	2B
ART 89	1B	1B	1B	1B	2B
ART 50	1B	1B	1B	1B	2B
ART 59	1B	1B	1B	1B	2B
	1/4"	3/8"	1/2" - 15mm	3/4" - 22mm	1" - 28mm
L	52	52	52	52	68
H	19	19	19	19	26
H1	4.8	4.8	4.8	4.8	6.0
E	17	17	17	17	22

V4 Dimensions in mm

This data sheet is designed as a guide and should not be regarded as wholly accurate in every detail. We reserve the right to amend the specification of any product without notice.