

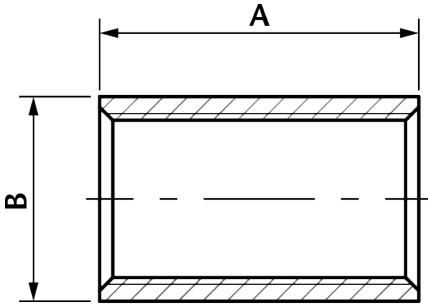
FS

Full Socket OD Machined

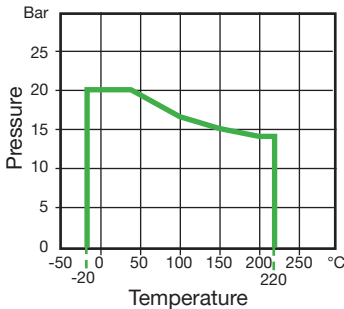


Features

- Made from CF3M (316L) Stainless Steel material and conform to ISO 4144 standard.
- Threads are to BSP Parallel (ISO 7/1) or NPT (ANSI B1.20.1).
- Material certificates available on request.
- Tested & inspected prior to despatch.
- 12 month warranty from date of installation.
- Manufactured in accordance with ISO9001:2015 quality system.



| DN | A | B | Kgs |
|--------|------|-------|-------|
| 1/8" | 17.0 | 13.5 | 0.009 |
| 1/4" | 24.0 | 16.7 | 0.021 |
| 3/8" | 25.0 | 20.4 | 0.029 |
| 1/2" | 32.0 | 24.9 | 0.045 |
| 3/4" | 35.0 | 30.0 | 0.057 |
| 1" | 41.0 | 37.8 | 0.101 |
| 1 1/4" | 46.8 | 47.0 | 0.175 |
| 1 1/2" | 46.8 | 53.0 | 0.193 |
| 2" | 54.5 | 65.7 | 0.331 |
| 2 1/2" | 63.0 | 82.0 | 0.505 |
| 3" | 69.0 | 95.8 | 0.722 |
| 4" | 81.0 | 121.5 | 1.061 |



| Temperature (°C) | Non-shock maximum working pressure (bar) |
|------------------|--|
| -20 to 40 | 20 |
| 100 | 16.5 |
| 150 | 15 |
| 200 | 14 |
| 220 | 13.5 |

- NOTE 1 Pressure for intermediate temperatures may be determined by the interpolation method.
- NOTE 2 Temperatures indicated are those of internal fluid.
- NOTE 3 Piping loads, stresses and moments are not taken into account.