

# SLP Series N/C

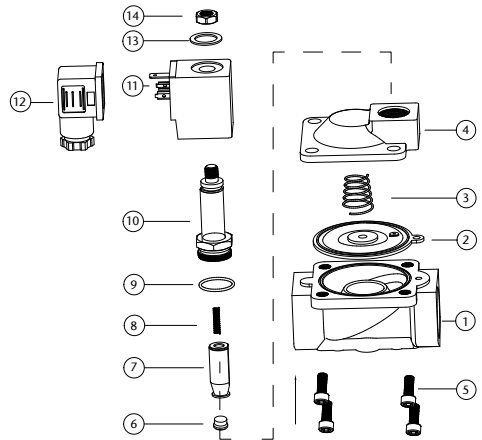
## Solenoid Valves Normally Closed



### Features

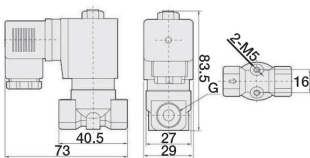
- Available in 230VAC, 110VAC, 12VDC, 24VDC, 24VAC
- Thread standard: ISO 228/1
- Coil Rating: IP 65
- Coil Duty Cycle: 100%
- EPDM model is WRAS approved
- Available sizes -  
1/8", 1/4", 3/8", 1/2", 3/4", 1", 1.1/4", 1.1/2", 2"
- Flanged version available in  
1", 1.1/4", 1.1/2", 2", 2.1/2", 3", 4"

N.	Part Name	Materials
1	Body	Brass
2	Diaphragm	NBR / EPDM / Viton
3	Diaphragm Spring	Stainless Steel 304
4	Valve Cover	Brass
5	Bolt	Stainless Steel 302
6	Pilot Seal	NBR / EPDM / Viton
7	Pilot	Stainless Steel 1J117
8	Pilot Spring	Stainless Steel 304
9	O-Ring	NBR / EPDM / Viton
10	Plunger Tube Unit	Stainless Steel 304 + 1J117
11	Coil	Enamelled Wire
12	Plug	Nylon
13	Washer	Stainless Steel 302
14	Lock Nut	Stainless Steel 302

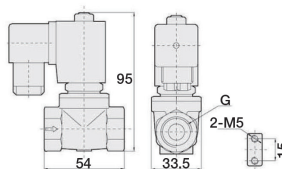


### Main Dimensions

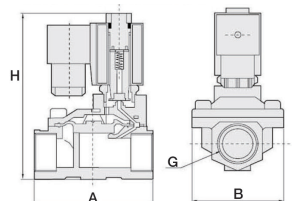
**Orifice: 3mm & 4mm**  
**Port: 1/8", 1/4" & 3/8"**



**Orifice: 10.5mm**  
**Port: 1/4", 3/8" & 1/2"**



**Large Orifice**  
**See table opposite**



# SLP Series N/C



## Valve Specification

Port Size (G)	Orifice	Kv Value	Pressure Difference (Bar)				Min/Max. Temp (°C)	VA AC 230V	VA AC 110V	VA AC 24V	W DC 24V	Diaphragm	Main Dimension AxBxH
			Min.	Air / Gas	Water / Hot Liquid	Max. Working Pressure							
1/8"	3	0.20	0	13	13	10	0/80	22	22	18	13	NBR	-
	3	0.20	0	13	13	-	0/120	22	22	18	13	EPDM	-
	3	0.20	0	13	13	10	0/120	22	22	18	13	VITON	-
1/4"	3	0.20	0	13	13	10	0/80	22	22	18	13	NBR	-
	3	0.20	0	13	13	-	0/120	22	22	18	13	EPDM	-
	3	0.20	0	13	13	10	0/120	22	22	18	13	VITON	-
	10.5	1.27	0	16	16	13	0/80	22	22	18	13	NBR	-
	10.5	1.27	0	16	16	-	0/120	22	22	18	13	EPDM	-
	10.5	1.27	0	16	16	13	0/120	22	22	18	13	VITON	-
3/8"	3	0.26	0	13	13	10	0/80	22	22	18	13	NBR	-
	3	0.26	0	13	13	10	0/120	22	22	18	13	EPDM	-
	3	0.26	0	13	13	10	0/120	22	22	18	13	VITON	-
	4	0.52	0	8	8	6	0/80	22	22	18	13	NBR	-
	4	0.52	0	8	8	6	0/120	22	22	18	13	EPDM	-
	4	0.52	0	8	8	6	0/120	22	22	18	13	VITON	-
	10.5	1.45	0	16	16	13	0/80	22	22	18	13	NBR	-
	10.5	1.45	0	16	16	-	0/120	22	22	18	13	EPDM	-
	10.5	1.45	0	16	16	13	0/120	22	22	18	13	VITON	-
	13	3.89	0.5	16	16	13	0/80	22	22	18	13	NBR	66x48x112
	13	3.89	0.5	16	16	-	0/120	22	22	18	13	EPDM	66x48x112
13	3.89	0.5	16	16	13	0/120	22	22	18	13	VITON	66x48x112	
1/2"	10.5	1.51	0	16	16	13	0/80	22	22	18	13	NBR	-
	10.5	1.51	0	16	16	-	0/120	22	22	18	13	EPDM	-
	10.5	1.51	0	16	16	13	0/120	22	22	18	13	VITON	-
	13	3.89	0.5	16	16	13	0/80	22	22	18	13	NBR	66x48x112
	13	3.89	0.5	16	16	-	0/120	22	22	18	-	EPDM	66x48x112
	13	3.89	0.5	16	16	13	0/120	22	22	18	-	VITON	66x48x112
3/4"	20	6.57	0.5	16	16	13	0/80	22	22	18	13	NBR	75x58x118
	20	6.57	0.5	16	16	-	0/120	22	22	18	13	EPDM	75x58x118
	20	6.57	0.5	16	16	13	0/120	22	22	18	13	VITON	75x58x118
1"	25	10.37	0.5	16	16	13	0/80	22	22	18	13	NBR	96x70x131
	25	10.37	0.5	16	16	-	0/120	22	22	18	13	EPDM	96x70x131
	25	10.37	0.5	16	16	13	0/120	22	22	18	13	VITON	96x70x131
1 1/4"	35	19.01	0.5	16	16	13	0/80	22	22	18	13	NBR	131x96x146
	35	19.01	0.5	16	16	-	0/120	22	22	18	13	EPDM	131x96x146
	35	19.01	0.5	16	16	13	0/120	22	22	18	13	VITON	131x96x146
1 1/2"	40	25.92	0.5	16	16	13	0/80	22	22	18	13	NBR	131x96x146
	40	25.92	0.5	16	16	-	0/120	22	22	18	13	EPDM	131x96x146
	40	25.92	0.5	16	16	13	0/120	22	22	18	13	VITON	131x96x146
2"	50	41.47	0.5	16	16	13	0/80	22	22	18	13	NBR	165x120x167
	50	41.47	0.5	16	16	-	0/120	22	22	18	13	EPDM	165x120x167
	50	41.47	0.5	16	16	13	0/120	22	22	18	13	VITON	165x120x167