

# ZS Series N/C

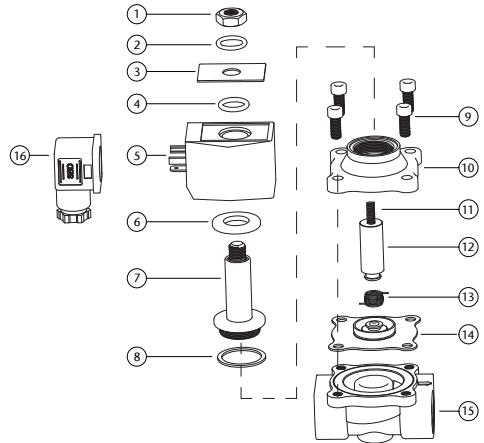
## Solenoid Valves Normally Closed



### Features

- Available in 230VAC, 110VAC, 12VDC, 24VDC, 24VAC
- Thread standard: ISO 228/1
- Coil Rating: IP 65
- Coil Duty Cycle: 100%
- Available sizes -  
1/8", 1/4", 3/8", 1/2", 3/4", 1", 1.1/4", 1.1/2", 2"
- Flanged version available in  
1", 1.1/4", 1.1/2", 2", 2.1/2", 3", 4"

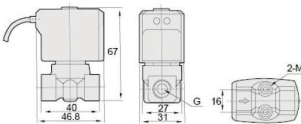
N.	Part Name	Materials
1	Locknut	Stainless Steel 302
2	Washer	Stainless Steel 302
3	Plate	Aluminium
4	Washer*	Galvanised Iron
5	Coil	Enamelled Wire
6	Baseplate	Plated Steel
7	Plunger Tube Unit	Stainless Steel 304 + 1J117
8	Plunger Tube Seal	PTFE
9	Bolt	Stainless Steel 302
10	Valve Cover	Brass / Stainless Steel 316
11	Plunger Spring	Stainless Steel 304
12	Pilot Unit	Stainless Steel 304 + 1J117
13	Coil Spring	Stainless Steel 304
14	Diaphragm Unit	NBR / EPDM / Viton
15	Body	Brass / Stainless Steel 316
16	Plug	Nylon



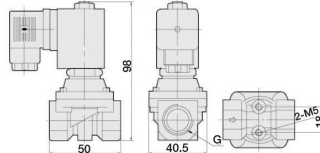
\*Sizes 1.1/4"-2" with a Stainless Steel body is supplied with O-Ring in NBR / EPDM / Viton

### Main Dimensions

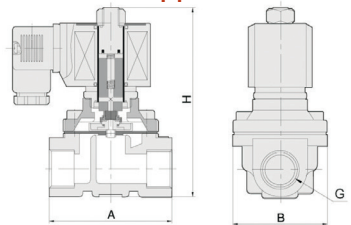
**Orifice: 2.5mm**  
**Port: 1/8" & 1/4"**



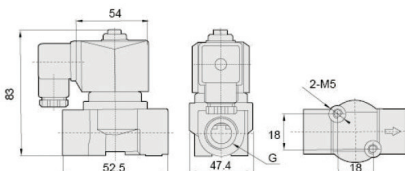
**Orifice: 10mm**  
**Port: 1/4", 3/8" & 1/2"**



**Large Orifice**  
**See table opposite**



**Orifice: 2.5mm**  
**Port: 1/8" & 1/4"**



V3. Dimensions in mm

This data sheet is designed as a guide and should not be regarded as wholly accurate in every detail. We reserve the right to amend the specification of any product without notice.

# ZS Series N/C



Port Size (G)	Orifice	Kv Value	Pressure Difference (Bar)						Min/Max. Temp (°C)	VA AC 230V	VA AC 110V	VA AC 24V	W DC 24V	Diaphragm	Main Dimension AxBxH
			Min.	Air / Gas		Water / Hot Liquid		Light Oil ≤20CST							
				AC DC	AC DC	AC DC	AC DC								
1/8"	2.5	0.2	0	7 5	7 5	7 5	7 5	0/80	20	28	55	24	NBR	-	
	2.5	0.2	0	7 5	7 5	- -	- -	0/120	20	28	55	24	EPDM	-	
	2.5	0.2	0	7 5	7 5	7 5	7 5	0/120	20	28	55	24	VITON	-	
1/4"	2.5	0.2	0	7 5	7 5	7 5	7 5	0/80	20	28	55	24	NBR	-	
	2.5	0.2	0	7 5	7 5	- -	- -	0/120	20	28	55	24	EPDM	-	
	2.5	0.2	0	7 5	7 5	7 5	7 5	0/120	20	28	55	24	VITON	-	
	10	0.86	0	20 16	20 16	20 16	20 16	0/80	20	28	55	24	NBR	-	
	10	0.86	0	20 16	20 16	- -	- -	0/120	20	28	55	24	EPDM	-	
	10	0.86	0	20 16	20 16	20 16	20 16	0/120	20	28	55	24	VITON	-	
3/8"	4	0.52	0	8 5	8 5	5 5	5 5	0/80	20	28	55	24	NBR	-	
	4	0.52	0	8 5	8 5	- -	- -	0/120	20	28	55	24	EPDM	-	
	4	0.52	0	8 5	8 5	5 5	5 5	0/120	20	28	55	24	VITON	-	
	10	1.56	0	20 16	20 16	20 16	20 16	0/80	20	28	55	24	NBR	-	
	10	1.56	0	20 16	20 16	- -	- -	0/120	20	28	55	24	EPDM	-	
	10	1.56	0	20 16	20 16	20 16	20 16	0/120	20	28	55	24	VITON	-	
	16	4.15	0	10 6	10 6	7 4	7 4	0/80	20	28	55	24	NBR	-	
	16	4.15	0	10 6	10 6	- -	- -	0/120	20	28	55	24	EPDM	-	
	16	4.15	0	10 6	10 6	7 4	7 4	0/120	20	28	55	24	VITON	-	
1/2"	10	1.64	0	20 16	20 16	20 16	20 16	0/80	20	28	55	24	NBR	-	
	10	1.64	0	20 16	20 16	- -	- -	0/120	20	28	55	24	EPDM	-	
	10	1.64	0	20 16	20 16	20 16	20 16	0/120	20	28	55	24	VITON	-	
	16	4.15	0	10 6	10 6	7 4	7 4	0/80	20	28	55	24	NBR	-	
	16	4.15	0	10 6	10 6	- -	- -	0/120	20	28	55	24	EPDM	-	
	16	4.15	0	10 6	10 6	7 4	7 4	0/120	20	28	55	24	VITON	-	
3/4"	20	6.57	0	10 6	10 6	7 4	7 4	0/80	20	28	55	24	NBR	73x57x114	
	20	6.57	0	10 6	10 6	- -	- -	0/120	20	28	55	24	EPDM	73x57x114	
	20	6.57	0	10 6	10 6	7 4	7 4	0/120	20	28	55	24	VITON	73x57x114	
1"	25	10.37	0	10 6	10 6	7 4	7 4	0/80	20	28	55	24	NBR	99x77x121	
	25	10.37	0	10 6	10 6	- -	- -	0/120	20	28	55	24	EPDM	99x77x121	
	25	10.37	0	10 6	10 6	7 4	7 4	0/120	20	28	55	24	VITON	99x77x121	
	25	10.37	0	10 6	3 3	- -	- -	0/120	20	28	55	24	Silicon	99x77x121	
	-	-	-	-	-	-	-	-	20	28	55	24	Rubber	-	
1 1/4"	35	20.74	0	10 6	10 6	7 4	7 4	0/80	20	28	55	24	NBR	112x86.5x150	
	35	20.74	0	10 6	10 -	- -	- -	0/120	20	28	55	24	EPDM	112x86.5x150	
	35	20.74	0	10 6	10 6	7 4	7 4	0/120	20	28	55	24	VITON	112x86.5x150	
1 1/2"	40	25.06	0	10 6	10 6	7 4	7 4	0/80	20	28	55	24	NBR	123x94x160	
	40	25.06	0	10 6	10 -	- -	- -	0/120	20	28	55	24	EPDM	123x94x160	
	40	25.06	0	10 6	10 6	7 7	7 7	0/120	20	28	55	24	VITON	123x94x160	
2"	50	41.47	0	10 6	10 6	7 4	7 4	0/80	20	28	55	24	NBR	168x123x183	
	50	41.47	0	10 6	10 -	- -	- -	0/120	20	28	55	24	EPDM	168x123x183	
	50	41.47	0	10 6	10 6	7 4	7 4	0/120	20	28	55	24	VITON	168x123x183	